



MLS 7103605 Lake Home

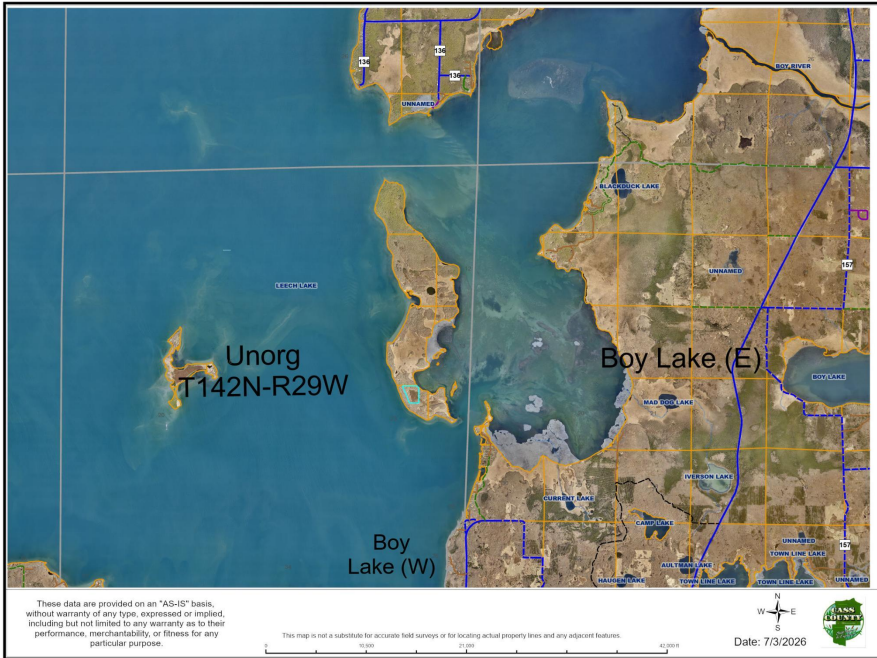
\$209,900

528 sq ft
1 bedrooms
0 baths

8565 Bear Island Landing
Walker MN 56484

Waterfront: Leech

Status: Active



Description:

Rare Bear Island opportunity on legendary Leech Lake! This off-grid seasonal cabin sits on 26.52 wooded acres with approximately 205 feet of shoreline, offering privacy, hunting, fishing, boating, and year-round recreational adventure. The rustic cabin has classic Northwoods character with wood heat, deck space, and a true unplugged getaway feel. Property also includes sauna/outbuilding and shed for extra storage and utility. Whether used as a hunting camp, fishing retreat, island escape, or long-term legacy property, this is a unique chance to own acreage and lake frontage on one of Minnesota's premier lakes. Private, rugged, peaceful, and packed with recreational potential.

Additional Details:

Year Built	1985
Lot Acres	26.52
Lot Dimensions	205x1124x650x1346x1052
School District	118
Taxes	\$640
Taxes with Assessments	\$726
Tax Year	2026

Additional Features:

Fuel: Electric, Wood **Heat:** Wood Stove

Driving Directions:

From the Brevik Public Access, Head North onto Leech Lake to the S. End of Bear Island, around the S. Horn to the E. and Into the protected cove on the E. side of the Island.



Listed By:
North Country Properties LLC

Affinity Real Estate Inc. participates in the Regional Multiple Listing Service of Minnesota, Inc Broker Reciprocity (sm) program, allowing us to display other broker's listings on our website. All properties are subject to prior sale, change or withdrawal.



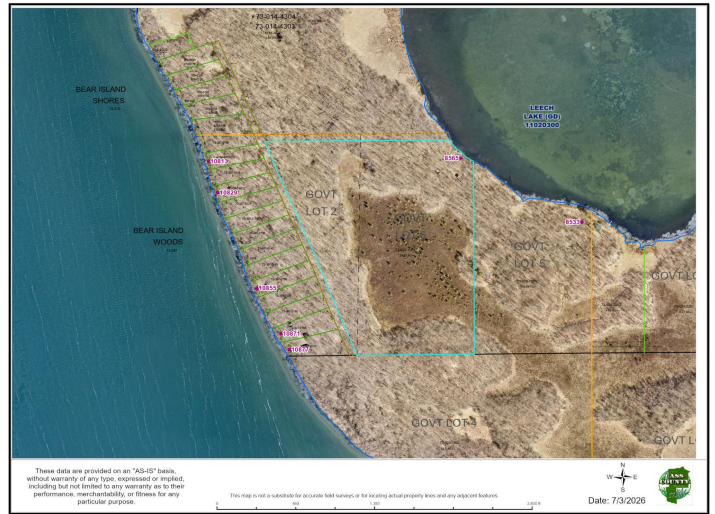
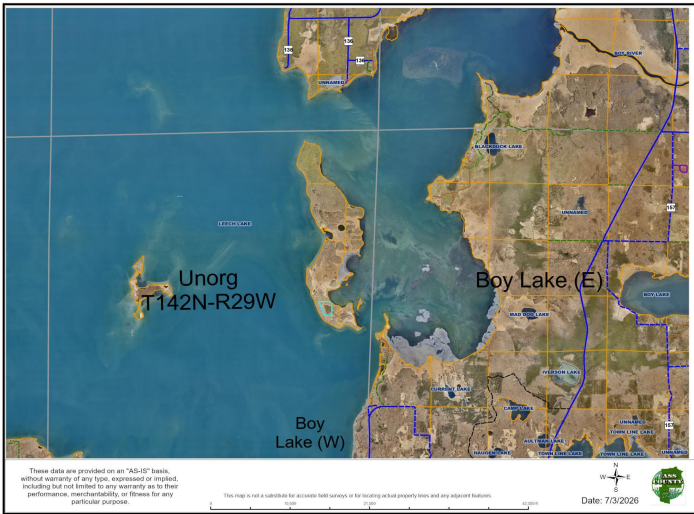
Call Affinity Real Estate

218-237-3333

info@affinityrealestate.com



Affinity Real Estate - 600 Park Avenue South - Park Rapids MN 56470



website: www.AffinityRealEstate.com | email: info@affinityrealestate.com | office: 218-237-3333 | fax:218-237-3377



\$209,900
 MLS 7103605 Lake Home
 8565 Bear Island Landing
 Walker MN 56484