



MLS 7103771 Residential

**\$465,000**

2,478 sq ft  
4 bedrooms  
3 baths

1167 Deer Ridge Road  
Pillager MN 56473

Status: Coming Soon

**Description:**

Peaceful, private, and closer to town than you think! Tucked in the heart of the Brainerd Lakes Area, this well-maintained 4BR/3BA home sits on 2.5 serene acres, offering a perfect retreat that feels a world away while keeping amenities just minutes from your door. Pride of ownership shines throughout. The main floor features an open-concept kitchen, dining, and living area with vaulted ceilings and a stunning gas stone fireplace. Start your mornings watching wildlife from the screened-in porch or front deck. The main level also offers a private owner's suite with a walk-through bath and a versatile den, ideal for an office or reading nook. The walkout lower level is built for comfort, a spacious family room, a 4th bedroom, and a large laundry/utility space. Complete with an oversized garage and beautiful grounds, this property perfectly balances a secluded country feel with prime Brainerd Lakes convenience. A rare find!

**Additional Details:**

Year Built	2003
Lot Acres	2.5
Lot Dimensions	190x516x220x545
Garage Stalls	2
School District	116
Taxes	\$2,280
Taxes with Assessments	\$2,366
Tax Year	2026

**Additional Features:**

**Basement:** Finished, Walkout **Fuel:** Electric, Natural Gas **Garage:** 2 **Heat:** Forced Air, Fireplace(s), In-Floor Heating **Sewer:** Private Sewer **Water:** Drilled **Air Conditioning:** Central Air

**Driving Directions:**

From 210/371, head west on 210, turn left on 11th Ave SW, turn left onto Hardy Lake Rd, turn right onto Deer Ridge Rd SW, property on left.



Listed By:  
Edina Realty, Inc.

Affinity Real Estate Inc. participates in the Regional Multiple Listing Service of Minnesota, Inc Broker Reciprocity (sm) program, allowing us to display other broker's listings on our website. All properties are subject to prior sale, change or withdrawal.



Call Affinity Real Estate

**218-237-3333**

[info@affinityrealestate.com](mailto:info@affinityrealestate.com)



Affinity Real Estate - 600 Park Avenue South - Park Rapids MN 56470



website: [www.AffinityRealEstate.com](http://www.AffinityRealEstate.com) | email: [info@affinityrealestate.com](mailto:info@affinityrealestate.com) | office: 218-237-3333 | fax:218-237-3377



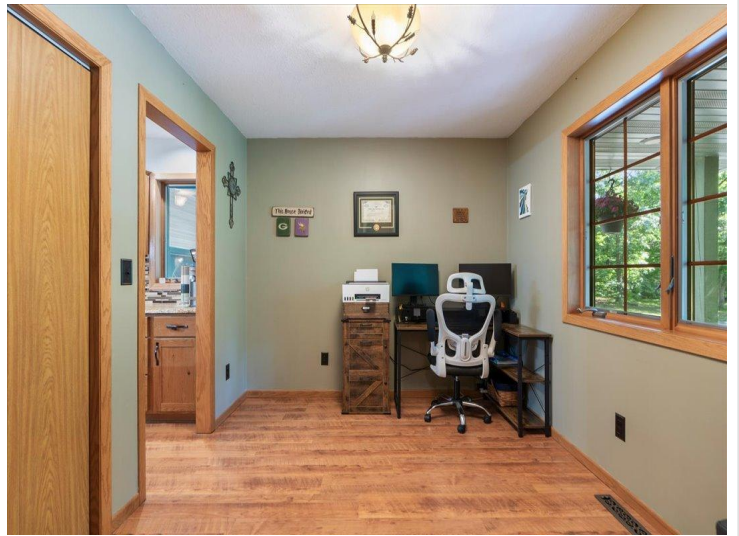
**\$465,000**  
MLS 7103771 Residential  
1167 Deer Ridge Road  
Pillager MN 56473



website: [www.AffinityRealEstate.com](http://www.AffinityRealEstate.com) | email: [info@affinityrealestate.com](mailto:info@affinityrealestate.com) | office: 218-237-3333 | fax: 218-237-3377

**Affinity**  
REAL ESTATE INC

**\$465,000**  
MLS 7103771 Residential  
1167 Deer Ridge Road  
Pillager MN 56473



website: [www.AffinityRealEstate.com](http://www.AffinityRealEstate.com) | email: [info@affinityrealestate.com](mailto:info@affinityrealestate.com) | office: 218-237-3333 | fax:218-237-3377

**Affinity**  
REAL ESTATE INC

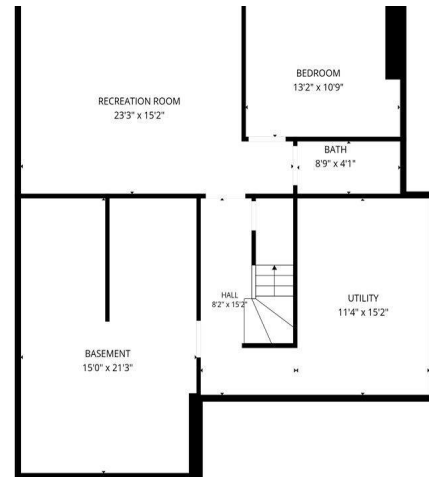
**\$465,000**  
MLS 7103771 Residential  
1167 Deer Ridge Road  
Pillager MN 56473



website: [www.AffinityRealEstate.com](http://www.AffinityRealEstate.com) | email: [info@affinityrealestate.com](mailto:info@affinityrealestate.com) | office: 218-237-3333 | fax:218-237-3377

**Affinity**  
REAL ESTATE INC

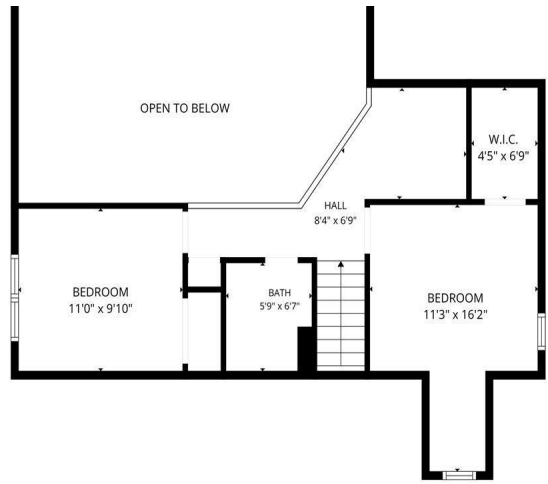
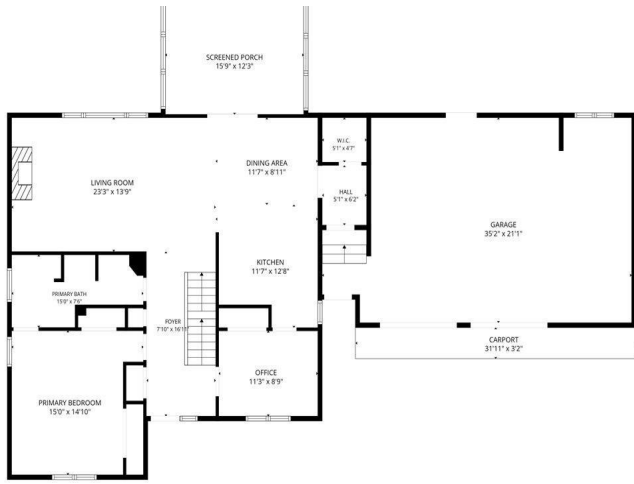
**\$465,000**  
MLS 7103771 Residential  
1167 Deer Ridge Road  
Pillager MN 56473



website: [www.AffinityRealEstate.com](http://www.AffinityRealEstate.com) | email: [info@affinityrealestate.com](mailto:info@affinityrealestate.com) | office: 218-237-3333 | fax: 218-237-3377



**\$465,000**  
MLS 7103771 Residential  
1167 Deer Ridge Road  
Pillager MN 56473



website: [www.AffinityRealEstate.com](http://www.AffinityRealEstate.com) | email: [info@affinityrealestate.com](mailto:info@affinityrealestate.com) | office: 218-237-3333 | fax: 218-237-3377



**\$465,000**  
 MLS 7103771 Residential  
 1167 Deer Ridge Road  
 Pillager MN 56473