



MLS 7103807 Land

**\$440,000**

116.85 Acres  
Finished Lot(s)

38953 Ada Beach Road  
Waubun MN 56589

Status: Active

**Description:**

Located just east of Elbow Lake in Becker County, Minnesota, this 116.85± acre recreational property offers a diverse landscape, established improvements, and direct access to extensive public land. The property is positioned at the end of a gated dead-end road, providing a secluded setting while remaining within convenient driving distance of area lakes, public boat launches, modern conveniences and year-round recreational opportunities.

The land features a blend of mature hardwoods, aspen, and pine across rolling terrain. High ground transitions into lowland bedding cover, with multiple open water ponds and a meandering creek that flows toward nearby Elbow Lake. This combination of habitat types supports a variety of wildlife and creates an attractive setting for outdoor recreation and hunting. An established trail system provide access throughout the property, along with existing stand locations and several areas suitable for food plots.

The property borders hundreds of acres of county-owned land, expanding opportunities for hunting and exploration. Wildlife commonly found in the area includes deer, black bear, ruffed grouse, wild turkey, and waterfowl. Its located in Deer Zone 298 and bear Zone 46. The surrounding region is also well known for fishing, boating, ATV riding, snowmobiling, and cross-country skiing.

Utilities are already in place, including a private well, septic system, electricity, and high-speed internet service. The primary building is a 56' x 30' shouse constructed in 2009. The living quarters include approximately 900 square feet with one bedroom, one-and-one-half bathrooms, and a spacious open-concept kitchen and living area featuring vaulted ceilings, tile flooring, hickory cabinetry, and generous storage. The primary suite includes a private bathroom, while a half bath serves the main living area. An 18' x 13' three-season porch with expansive windows provides views of the surrounding landscape. Additional features include a large mudroom and laundry area with two sinks and plenty of counter top space for cleaning game.

A below-ground 8' x 12' concrete storm shelter provides additional storage potential and may also be used as a root cellar.

Attached to the residence is a 780-square-foot shop measuring 30' x 26'. The shop includes two 14-foot overhead doors, a 20-foot concrete apron, and overhead storage above the living quarters, offering ample room for equipment, recreational vehicles, boats, or workshop space.

Also located on the property is a seasonal cabin offering approximately 756 square feet of living space with three bedrooms, one bathroom, a full kitchen with a gas stove, forced-air heat, and a wraparound deck. The cabin provides additional accommodations for family members or guests.

Additional improvements include two elevated fenced garden beds, a hot tub, a carport, and an outhouse.

Conveniently located near numerous area lakes including Elbow Lake, Tulaby Lake, Many Point Lake, Round Lake, and Juggler Lake, all offering public boat launches with a short drive. Nearby dining options include the Onaska Lodge and Hotel. The property is also a part of the Regional Multiple Listing Service of Minnesota, providing convenient access to regional ATVs, snowmobiles, and other recreational equipment. The property is situated between Detroit Lakes and Bemidji, with Itasca State Park within comfortable driving distance. Whether your plans include hunting, fishing, trail riding, maintaining a real estate, or simply enjoying a seasonal retreat, or establishing a year-round residence, this Becker County property offers a diverse combination of wooded acreage, existing improvements, utilities, and recreational access in west central Minnesota.



Call Affinity Real Estate

218-237-3333

info@affinityrealestate.com

situated between

600 Park Avenue South, Park Rapids MN 56470

**Additional Details:**



website: [www.AffinityRealEstate.com](http://www.AffinityRealEstate.com) | email: [info@affinityrealestate.com](mailto:info@affinityrealestate.com) | office: 218-237-3333 | fax:218-237-3377



**\$440,000**  
MLS 7103807 Land  
38953 Ada Beach Road  
Waubun MN 56589



website: [www.AffinityRealEstate.com](http://www.AffinityRealEstate.com) | email: [info@affinityrealestate.com](mailto:info@affinityrealestate.com) | office: 218-237-3333 | fax:218-237-3377



**\$440,000**  
MLS 7103807 Land  
38953 Ada Beach Road  
Waubun MN 56589



website: [www.AffinityRealEstate.com](http://www.AffinityRealEstate.com) | email: [info@affinityrealestate.com](mailto:info@affinityrealestate.com) | office: 218-237-3333 | fax:218-237-3377



**\$440,000**  
MLS 7103807 Land  
38953 Ada Beach Road  
Waubun MN 56589



website: [www.AffinityRealEstate.com](http://www.AffinityRealEstate.com) | email: [info@affinityrealestate.com](mailto:info@affinityrealestate.com) | office: 218-237-3333 | fax:218-237-3377



**\$440,000**  
MLS 7103807 Land  
38953 Ada Beach Road  
Waubun MN 56589



website: [www.AffinityRealEstate.com](http://www.AffinityRealEstate.com) | email: [info@affinityrealestate.com](mailto:info@affinityrealestate.com) | office: 218-237-3333 | fax:218-237-3377



**\$440,000**  
MLS 7103807 Land  
38953 Ada Beach Road  
Waubun MN 56589



website: [www.AffinityRealEstate.com](http://www.AffinityRealEstate.com) | email: [info@affinityrealestate.com](mailto:info@affinityrealestate.com) | office: 218-237-3333 | fax:218-237-3377



**\$440,000**  
MLS 7103807 Land  
38953 Ada Beach Road  
Waubun MN 56589



website: [www.AffinityRealEstate.com](http://www.AffinityRealEstate.com) | email: [info@affinityrealestate.com](mailto:info@affinityrealestate.com) | office: 218-237-3333 | fax: 218-237-3377

**Affinity**  
REAL ESTATE INC

**\$440,000**  
MLS 7103807 Land  
38953 Ada Beach Road  
Waubun MN 56589



website: [www.AffinityRealEstate.com](http://www.AffinityRealEstate.com) | email: [info@affinityrealestate.com](mailto:info@affinityrealestate.com) | office: 218-237-3333 | fax: 218-237-3377

**Affinity**  
REAL ESTATE INC

**\$440,000**  
MLS 7103807 Land  
38953 Ada Beach Road  
Waubun MN 56589



website: [www.AffinityRealEstate.com](http://www.AffinityRealEstate.com) | email: [info@affinityrealestate.com](mailto:info@affinityrealestate.com) | office: 218-237-3333 | fax:218-237-3377

**Affinity**  
REAL ESTATE INC

**\$440,000**  
MLS 7103807 Land  
38953 Ada Beach Road  
Waubun MN 56589



website: [www.AffinityRealEstate.com](http://www.AffinityRealEstate.com) | email: [info@affinityrealestate.com](mailto:info@affinityrealestate.com) | office: 218-237-3333 | fax: 218-237-3377

**Affinity**  
REAL ESTATE INC

**\$440,000**  
MLS 7103807 Land  
38953 Ada Beach Road  
Waubun MN 56589



website: [www.AffinityRealEstate.com](http://www.AffinityRealEstate.com) | email: [info@affinityrealestate.com](mailto:info@affinityrealestate.com) | office: 218-237-3333 | fax:218-237-3377

**Affinity**  
REAL ESTATE INC

**\$440,000**  
MLS 7103807 Land  
38953 Ada Beach Road  
Waubun MN 56589



website: [www.AffinityRealEstate.com](http://www.AffinityRealEstate.com) | email: [info@affinityrealestate.com](mailto:info@affinityrealestate.com) | office: 218-237-3333 | fax:218-237-3377

**Affinity**  
REAL ESTATE INC

**\$440,000**  
MLS 7103807 Land  
38953 Ada Beach Road  
Waubun MN 56589



website: [www.AffinityRealEstate.com](http://www.AffinityRealEstate.com) | email: [info@affinityrealestate.com](mailto:info@affinityrealestate.com) | office: 218-237-3333 | fax:218-237-3377

**Affinity**  
REAL ESTATE INC

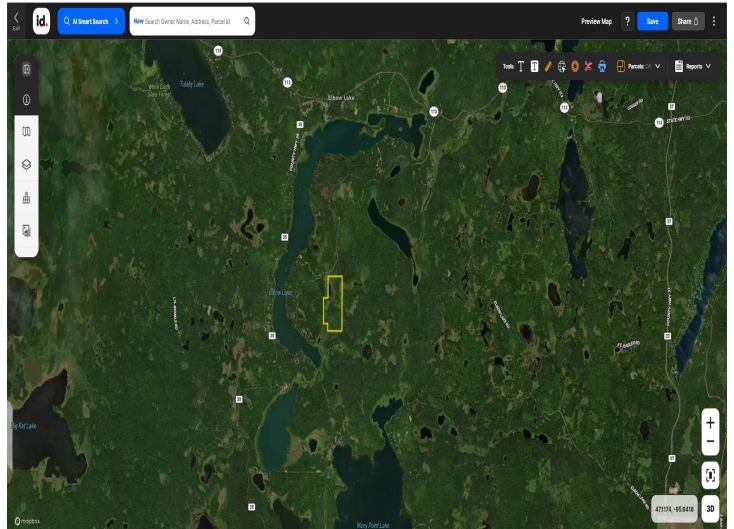
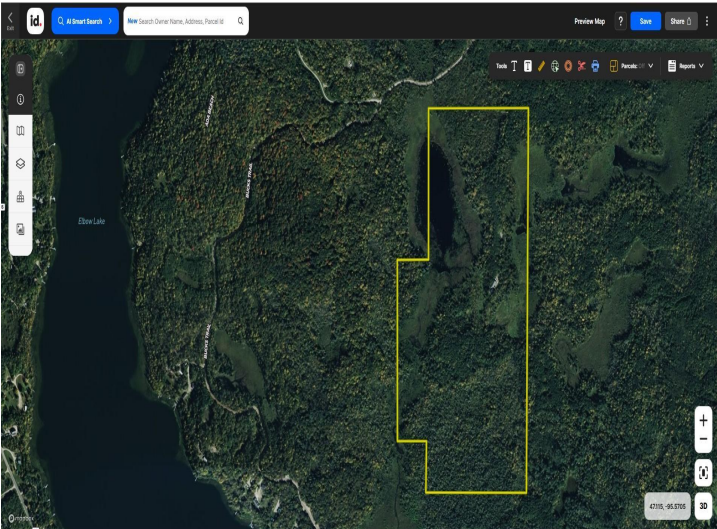
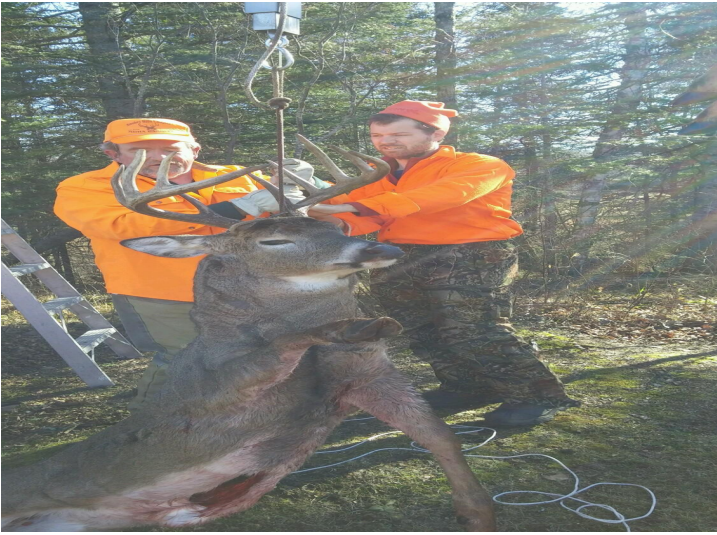
**\$440,000**  
MLS 7103807 Land  
38953 Ada Beach Road  
Waubun MN 56589



website: [www.AffinityRealEstate.com](http://www.AffinityRealEstate.com) | email: [info@affinityrealestate.com](mailto:info@affinityrealestate.com) | office: 218-237-3333 | fax:218-237-3377



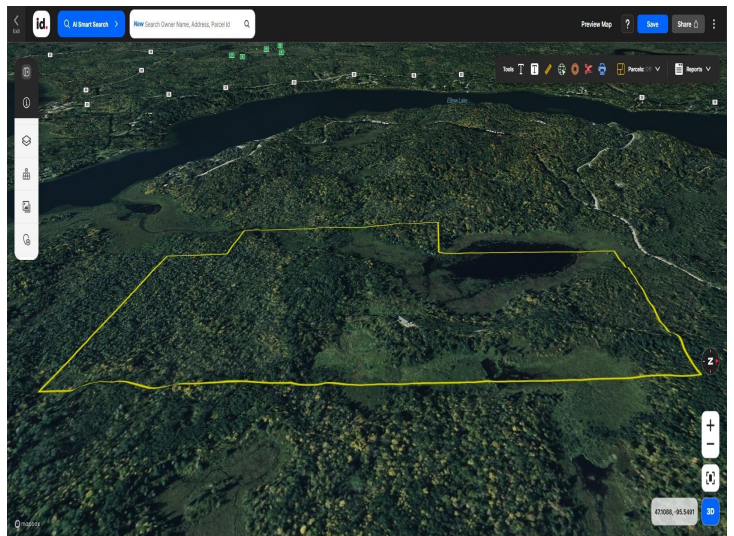
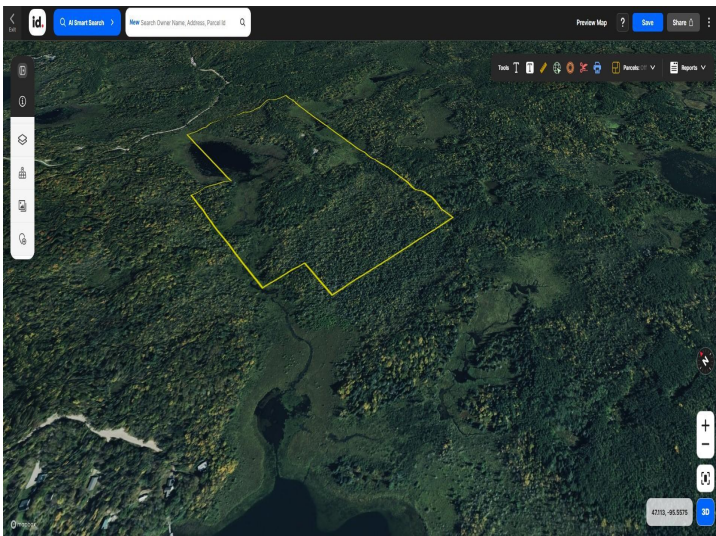
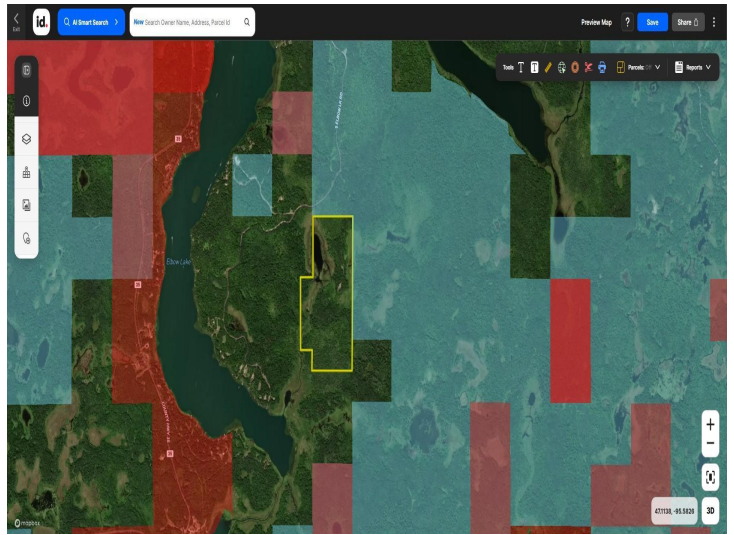
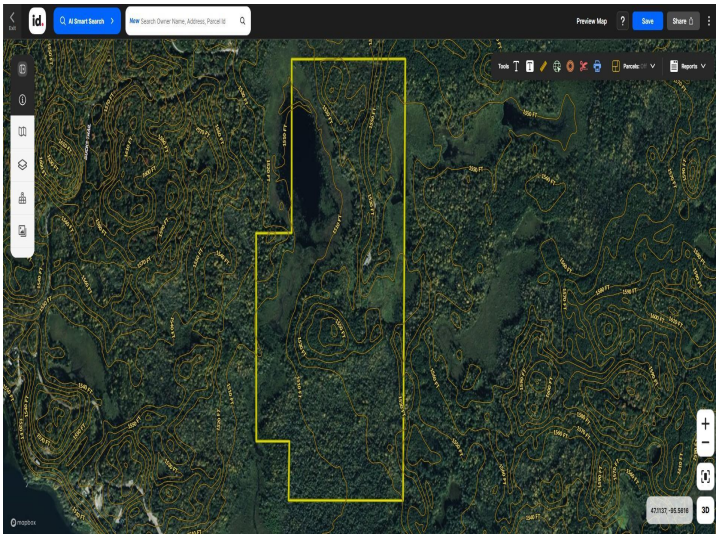
**\$440,000**  
MLS 7103807 Land  
38953 Ada Beach Road  
Waubun MN 56589



website: [www.AffinityRealEstate.com](http://www.AffinityRealEstate.com) | email: [info@affinityrealestate.com](mailto:info@affinityrealestate.com) | office: 218-237-3333 | fax:218-237-3377



**\$440,000**  
 MLS 7103807 Land  
 38953 Ada Beach Road  
 Waubun MN 56589



website: [www.AffinityRealEstate.com](http://www.AffinityRealEstate.com) | email: [info@affinityrealestate.com](mailto:info@affinityrealestate.com) | office: 218-237-3333 | fax:218-237-3377



**\$440,000**  
MLS 7103807 Land  
38953 Ada Beach Road  
Waubun MN 56589