



MLS 7103949 Lake Land

**\$369,000**

**Description:**

Nestled among mature pines and along a peaceful channel, the property offers privacy, beautiful natural surroundings, and easy access to the entire Whitefish Chain. Approximately 1.7 acres and 51ft of frontage with two potential building sites provide flexibility for your future home or getaway cabin. An existing 3-bedroom septic system is already installed north of the pond, offering added value and convenience.

Enjoy world-class boating, fishing, dining, and recreation from one of Minnesota’s most sought-after lake destinations.

**Additional Details:**

Lot Acres	1.7
Lot Dimensions	51x125xIRREG.
School District	2174
Taxes	\$354
Taxes with Assessments	\$354
Tax Year	2026

**Additional Features:**

**Driving Directions:**

From Jenkins take County Rd 15 to Right on Wildamere Drive to Right on Heath Drive stay to the right to Delta Bay Rd. to Fire Number 37061 and Signs. Please note the grass driveway ( See Certified Survey) run parallel to the neighbor's blacktop driveway.



Listed By:  
RE/MAX HomeMasters

Affinity Real Estate Inc. participates in the Regional Multiple Listing Service of Minnesota, Inc Broker Reciprocity (sm) program, allowing us to display other broker’s listings on our website. All properties are subject to prior sale, change or withdrawal.



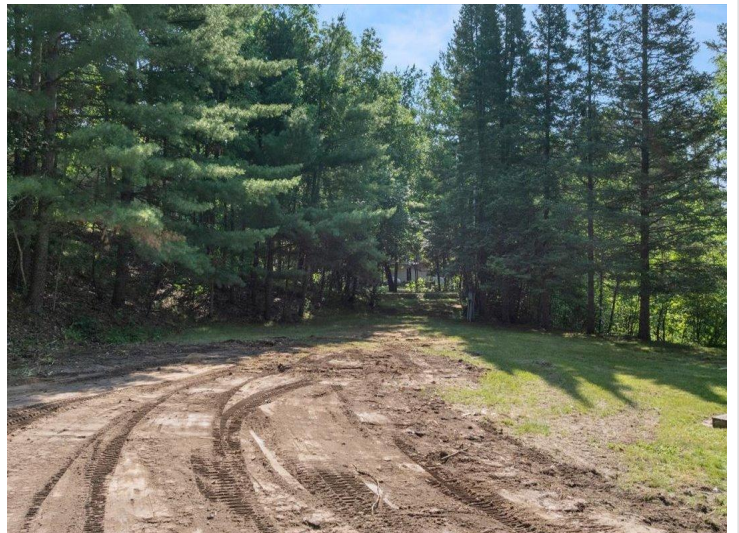
**Call Affinity Real Estate**

**218-237-3333**

**info@affinityrealestate.com**



**Affinity Real Estate - 600 Park Avenue South - Park Rapids MN 56470**



website: [www.AffinityRealEstate.com](http://www.AffinityRealEstate.com) | email: [info@affinityrealestate.com](mailto:info@affinityrealestate.com) | office: 218-237-3333 | fax:218-237-3377



**\$369,000**  
MLS 7103949 Lake Land  
37061 Delta Bay Drive  
Pine River MN 56474



website: [www.AffinityRealEstate.com](http://www.AffinityRealEstate.com) | email: [info@affinityrealestate.com](mailto:info@affinityrealestate.com) | office: 218-237-3333 | fax:218-237-3377



**\$369,000**  
MLS 7103949 Lake Land  
37061 Delta Bay Drive  
Pine River MN 56474



website: [www.AffinityRealEstate.com](http://www.AffinityRealEstate.com) | email: [info@affinityrealestate.com](mailto:info@affinityrealestate.com) | office: 218-237-3333 | fax:218-237-3377



**\$369,000**  
MLS 7103949 Lake Land  
37061 Delta Bay Drive  
Pine River MN 56474



website: [www.AffinityRealEstate.com](http://www.AffinityRealEstate.com) | email: [info@affinityrealestate.com](mailto:info@affinityrealestate.com) | office: 218-237-3333 | fax:218-237-3377



**\$369,000**  
MLS 7103949 Lake Land  
37061 Delta Bay Drive  
Pine River MN 56474