



MLS 7103960 Commercial

**\$122,000**

11941 147th Street  
Lake Park MN 56554

Status: Active

**Description:**

Construction underway now. Building will be ready for occupancy July 20th. Store all your toys and treasures in your new 40 X 60 foot storage building. This custom built 40 X 60 foot building has 14 foot tall 2 X 6 walls: a 16 foot wide by 12 foot tall insulated overhead door with opener; 3 foot service door; Three 4 X 3 foot windows placed high to provide light and ventilation; Concrete floor with floor drain and concrete driveway. Located on Becker #1, just 2 miles north of Becker #4, next to the Cormorant Township Recycling Center, with easy access to the Cormorant Lakes area on paved roads. Owner/Agent.

**Additional Details:**

Year Built	2026
Lot Acres	0.06
Lot Dimensions	40 x 60
Garage Stalls	12
School District	2889
Taxes	\$32
Taxes with Assessments	\$32
Tax Year	2026

**Additional Features:**

**Fuel:** Other **Garage:** 12 **Heat:** None **Sewer:** None **Water:** None

**Driving Directions:**

From Becker #4 and #1: North 2 miles on Becker #1 to property. Next to the Cormorant Township Yard Recycling Center.



Listed By:  
Cormorant Realty

Affinity Real Estate Inc. participates in the Regional Multiple Listing Service of Minnesota, Inc Broker Reciprocity (sm) program, allowing us to display other broker's listings on our website. All properties are subject to prior sale, change or withdrawal.



**Call Affinity Real Estate**

**218-237-3333**

**info@affinityrealestate.com**



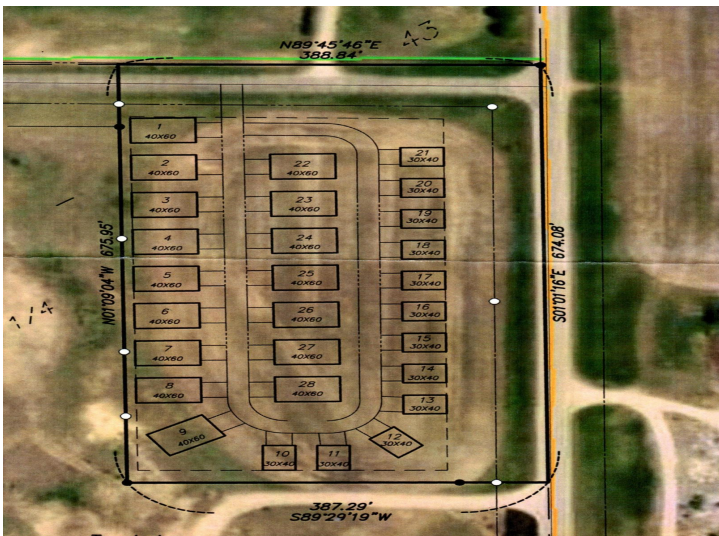
**Affinity Real Estate - 600 Park Avenue South - Park Rapids MN 56470**



website: [www.AffinityRealEstate.com](http://www.AffinityRealEstate.com) | email: [info@affinityrealestate.com](mailto:info@affinityrealestate.com) | office: 218-237-3333 | fax:218-237-3377



**\$122,000**  
MLS 7103960 Commercial  
11941 147th Street  
Lake Park MN 56554



website: [www.AffinityRealEstate.com](http://www.AffinityRealEstate.com) | email: [info@affinityrealestate.com](mailto:info@affinityrealestate.com) | office: 218-237-3333 | fax: 218-237-3377



**\$122,000**  
 MLS 7103960 Commercial  
 11941 147th Street  
 Lake Park MN 56554



website: [www.AffinityRealEstate.com](http://www.AffinityRealEstate.com) | email: [info@affinityrealestate.com](mailto:info@affinityrealestate.com) | office: 218-237-3333 | fax: 218-237-3377



**\$122,000**  
MLS 7103960 Commercial  
11941 147th Street  
Lake Park MN 56554



website: [www.AffinityRealEstate.com](http://www.AffinityRealEstate.com) | email: [info@affinityrealestate.com](mailto:info@affinityrealestate.com) | office: 218-237-3333 | fax:218-237-3377



**\$122,000**  
MLS 7103960 Commercial  
11941 147th Street  
Lake Park MN 56554