



MLS 7104337 Lake Home

\$799,000

3,631 sq ft
3 bedrooms
3 baths

14438 Cedarleaf Point Road
Brainerd MN 56401

Waterfront: South Long

Status: Coming Soon

Description:

Home features a weed roller and a 106ft dock (in lake) boat lift. Thermal Heat Pump for both heat and A/C (electric), Hydrogen Peroxide-Combat Rust and Rust Bacteria for a clear lake. Highest quality Anderson Windows with no seeum screens less than 8 years old. 2 large lake side picture windows (Main) and 1 large lake side picture window (upper-Primary Bedroom) BOSCH super quiet dishwasher, custom cabinets throughout, 100% stainless steel appliances, large walk-in pantry, bonus room upstairs, outside deck-cedar, and a 10x10 storage shed.

Additional Details:

Year Built	1998
Lot Acres	0.31
Lot Dimensions	76x355
Garage Stalls	2
School District	181
Taxes	\$4,250
Taxes with Assessments	\$4,250
Tax Year	2026

Additional Features:

Basement: Crawl Space **Fuel:** Electric **Garage:** 2 **Heat:** Geothermal **Sewer:** Mound Septic **Water:** Drilled **Air Conditioning:** Central Air

Driving Directions:

South on State Hwy 25 to County Road 22, turn left follow to Cedarleaf Point.



Listed By:
Weichert REALTORS Tower Properties

Affinity Real Estate Inc. participates in the Regional Multiple Listing Service of Minnesota, Inc Broker Reciprocity (sm) program, allowing us to display other broker's listings on our website. All properties are subject to prior sale, change or withdrawal.



Call Affinity Real Estate

218-237-3333

info@affinityrealestate.com



Affinity Real Estate - 600 Park Avenue South - Park Rapids MN 56470



website: www.AffinityRealEstate.com | email: info@affinityrealestate.com | office: 218-237-3333 | fax:218-237-3377



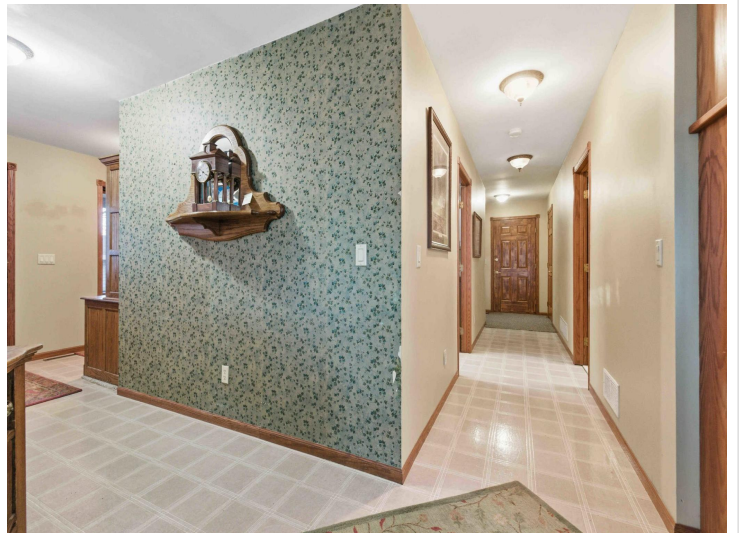
\$799,000
MLS 7104337 Lake Home
14438 Cedarleaf Point Road
Brainerd MN 56401



website: www.AffinityRealEstate.com | email: info@affinityrealestate.com | office: 218-237-3333 | fax:218-237-3377

Affinity
REAL ESTATE INC

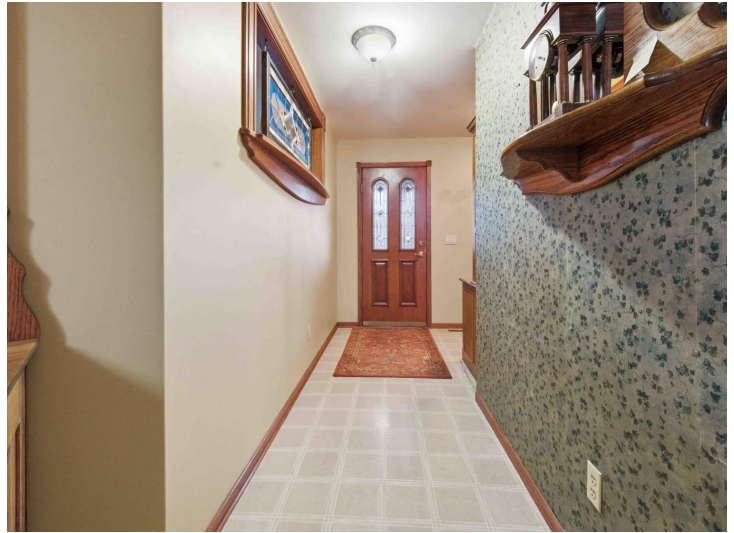
\$799,000
MLS 7104337 Lake Home
14438 Cedarleaf Point Road
Brainerd MN 56401



website: www.AffinityRealEstate.com | email: info@affinityrealestate.com | office: 218-237-3333 | fax:218-237-3377



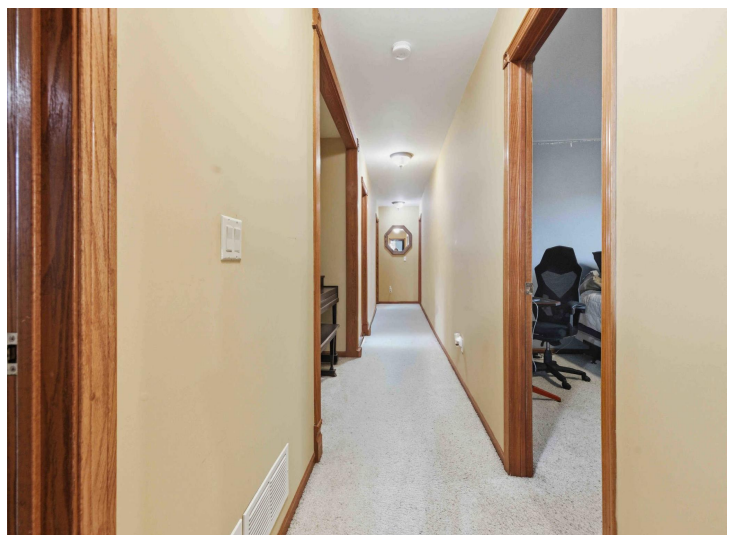
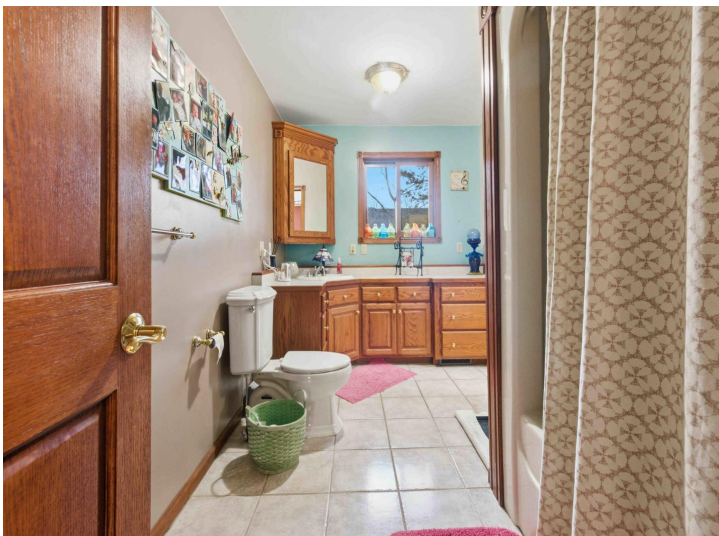
\$799,000
MLS 7104337 Lake Home
14438 Cedarleaf Point Road
Brainerd MN 56401



website: www.AffinityRealEstate.com | email: info@affinityrealestate.com | office: 218-237-3333 | fax: 218-237-3377

Affinity
REAL ESTATE INC

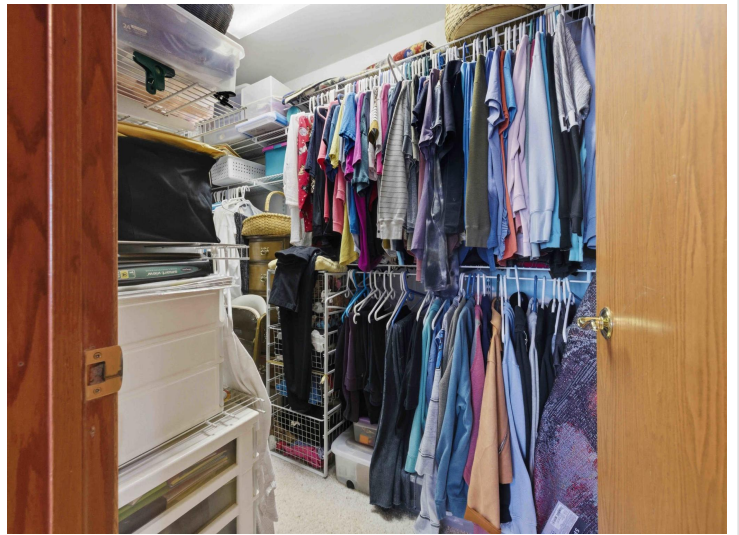
\$799,000
MLS 7104337 Lake Home
14438 Cedarleaf Point Road
Brainerd MN 56401



website: www.AffinityRealEstate.com | email: info@affinityrealestate.com | office: 218-237-3333 | fax:218-237-3377



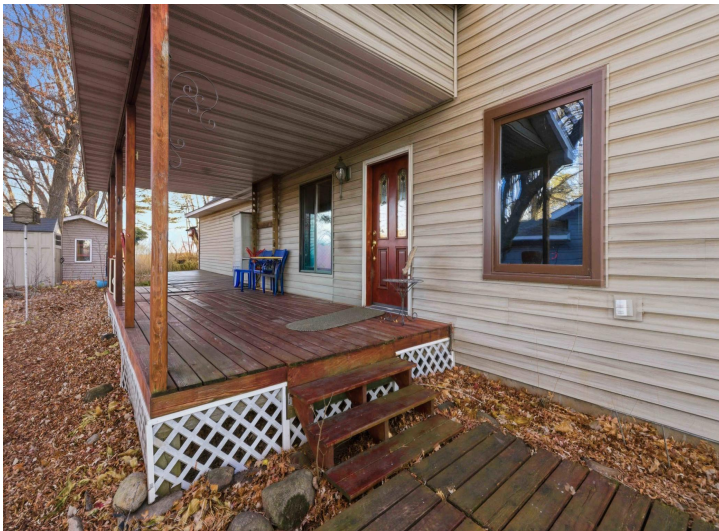
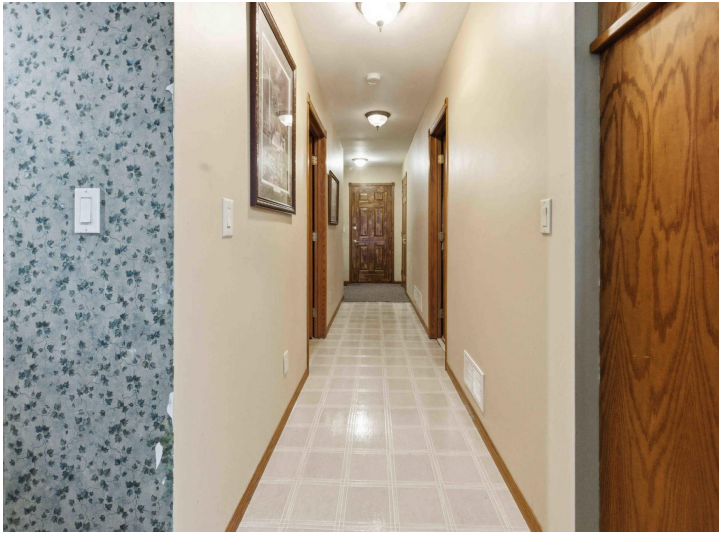
\$799,000
MLS 7104337 Lake Home
14438 Cedarleaf Point Road
Brainerd MN 56401



website: www.AffinityRealEstate.com | email: info@affinityrealestate.com | office: 218-237-3333 | fax: 218-237-3377

Affinity
REAL ESTATE INC

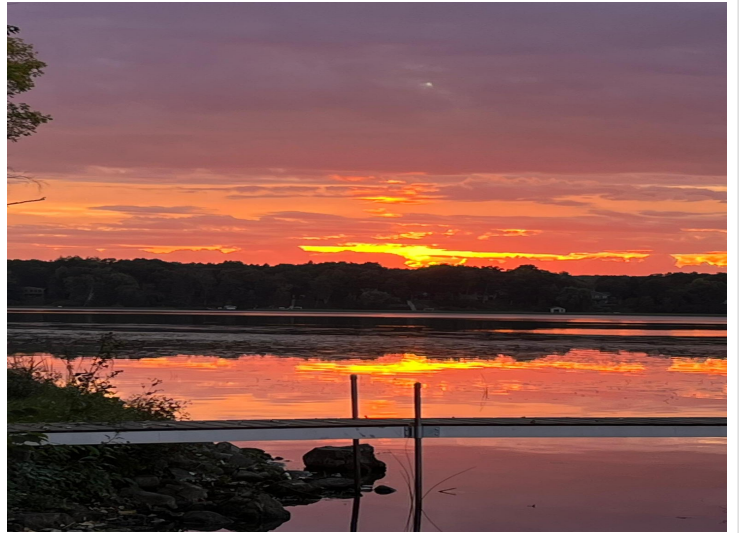
\$799,000
MLS 7104337 Lake Home
14438 Cedarleaf Point Road
Brainerd MN 56401



website: www.AffinityRealEstate.com | email: info@affinityrealestate.com | office: 218-237-3333 | fax:218-237-3377



\$799,000
MLS 7104337 Lake Home
14438 Cedarleaf Point Road
Brainerd MN 56401



website: www.AffinityRealEstate.com | email: info@affinityrealestate.com | office: 218-237-3333 | fax: 218-237-3377

Affinity
REAL ESTATE INC

\$799,000
MLS 7104337 Lake Home
14438 Cedarleaf Point Road
Brainerd MN 56401



website: www.AffinityRealEstate.com | email: info@affinityrealestate.com | office: 218-237-3333 | fax:218-237-3377



\$799,000
MLS 7104337 Lake Home
14438 Cedarleaf Point Road
Brainerd MN 56401