



MLS 7104593 Land

**\$24,900**

3080 Square Feet  
Subdivided

30858 Whitebirch Way  
Pequot Lakes MN 56472

Status: Active

**Description:**

Escape to Breezy Point with this beautifully wooded, privately owned lot in the exclusive gated Whitebirch RV & Camping Resort - Cluster 1. This nice perfectly level campsite offers the perfect blend of privacy and convenience, featuring mature trees for shade, a storage shed, and a cozy fire ring ready for relaxing evenings under the stars. Water and Electric are available.

Whitebirch is a gated community, open from April through November and offers an outstanding variety of amenities. This lot is ideally situated with easy walking access to the swimming pool and bathrooms. Pelican Lake access is available just two miles away at Breezy Point Resort, where you can enjoy boating, fishing, swimming, dining, golf, and all the recreation the Breezy Point Area is known for.

**Additional Details:**

Lot Acres	3080
Lot Dimensions	40x77
School District	186
Taxes	\$188
Taxes with Assessments	\$188
Tax Year	2026

**Additional Features:**

**Driving Directions:**

County Road 11 west of Breezy to South on Ranchette to Campground. Enter Campground & lot is on the left.



Listed By:  
RE/MAX Results - Nisswa

Affinity Real Estate Inc. participates in the Regional Multiple Listing Service of Minnesota, Inc Broker Reciprocity (sm) program, allowing us to display other broker's listings on our website. All properties are subject to prior sale, change or withdrawal.



Call Affinity Real Estate

**218-237-3333**

[info@affinityrealestate.com](mailto:info@affinityrealestate.com)



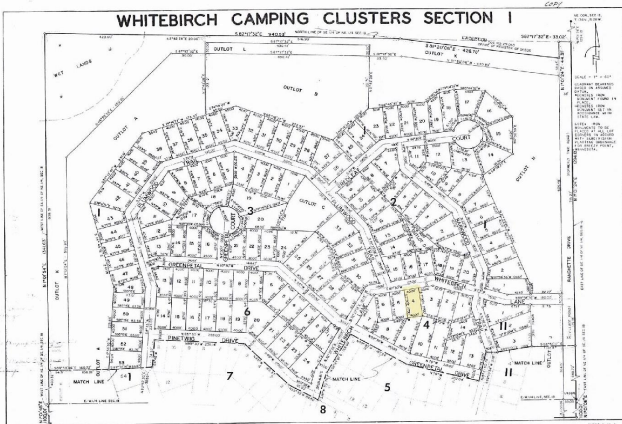
Affinity Real Estate - 600 Park Avenue South - Park Rapids MN 56470



website: [www.AffinityRealEstate.com](http://www.AffinityRealEstate.com) | email: [info@affinityrealestate.com](mailto:info@affinityrealestate.com) | office: 218-237-3333 | fax:218-237-3377



**\$24,900**  
MLS 7104593 Land  
30858 Whitebirch Way  
Pequot Lakes MN 56472



website: [www.AffinityRealEstate.com](http://www.AffinityRealEstate.com) | email: [info@affinityrealestate.com](mailto:info@affinityrealestate.com) | office: 218-237-3333 | fax:218-237-3377



**\$24,900**  
MLS 7104593 Land  
30858 White Birch Way  
Pequot Lakes MN 56472