



MLS 7104804 Residential

\$349,900

1,967 sq ft
4 bedrooms
2 baths

1112 Pine Tree Boulevard
Little Falls MN 56345

Status: Coming Soon

Description:

This beautifully maintained home offers the perfect blend of comfort, functionality and convenience in a great Little Falls neighborhood. From the moment you arrive you will appreciate the inviting curb appeal and welcoming atmosphere that makes this property feel like home.

Enter through a screened front patio that offers a great sitting location for your morning coffee, reading a book or just enjoying some solitude. Inside you will find a bright and comfortable living space with plenty of room for family and friends. The kitchen is open and spacious making it the perfect gathering spot for a light meal or family dining. The family room space opens up to a beautiful and private back yard perfect for grilling, entertaining or enjoying your morning coffee. With two driveways into the property there is plenty of parking space along with two storage sheds giving you plenty of space for all of the extras.

Conveniently located on the edge of town provides you a peaceful feel with all of the towns amenities close by.

Additional Details:

Year Built	1959
Lot Acres	0.43
Lot Dimensions	99x180
Garage Stalls	2
School District	482
Taxes	\$3,716
Taxes with Assessments	\$3,716
Tax Year	2025

Additional Features:

Basement: Block **Fuel:** Natural Gas **Garage:** 2 **Heat:** Forced Air **Sewer:** City Sewer/Connected **Water:** City Water/Connected **Air Conditioning:** Central Air

Driving Directions:

1112 Pine Tree Blvd



Listed By:
Northland Sotheby's International Realty

Affinity Real Estate Inc. participates in the Regional Multiple Listing Service of Minnesota, Inc Broker Reciprocity (sm) program, allowing us to display other broker's listings on our website. All properties are subject to prior sale, change or withdrawal.



Call Affinity Real Estate

218-237-3333

info@affinityrealestate.com



Affinity Real Estate - 600 Park Avenue South - Park Rapids MN 56470



website: www.AffinityRealEstate.com | email: info@affinityrealestate.com | office: 218-237-3333 | fax:218-237-3377

Affinity
REAL ESTATE INC

\$349,900
MLS 7104804 Residential
1112 Pine Tree Boulevard
Little Falls MN 56345



website: www.AffinityRealEstate.com | email: info@affinityrealestate.com | office: 218-237-3333 | fax: 218-237-3377

Affinity
REAL ESTATE INC

\$349,900
MLS 7104804 Residential
1112 Pine Tree Boulevard
Little Falls MN 56345



website: www.AffinityRealEstate.com | email: info@affinityrealestate.com | office: 218-237-3333 | fax:218-237-3377

Affinity
REAL ESTATE INC

\$349,900
MLS 7104804 Residential
1112 Pine Tree Boulevard
Little Falls MN 56345



website: www.AffinityRealEstate.com | email: info@affinityrealestate.com | office: 218-237-3333 | fax:218-237-3377



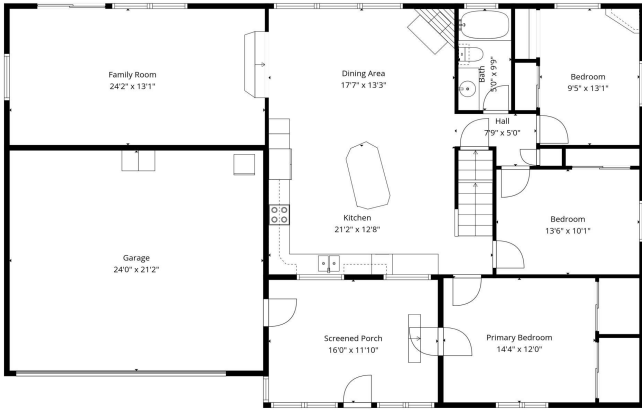
\$349,900
MLS 7104804 Residential
1112 Pine Tree Boulevard
Little Falls MN 56345



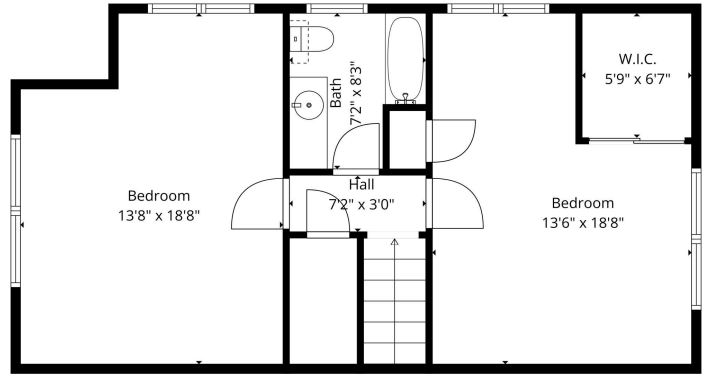
website: www.AffinityRealEstate.com | email: info@affinityrealestate.com | office: 218-237-3333 | fax:218-237-3377



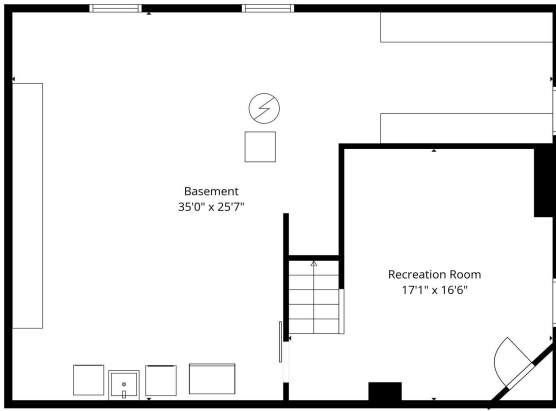
\$349,900
MLS 7104804 Residential
1112 Pine Tree Boulevard
Little Falls MN 56345



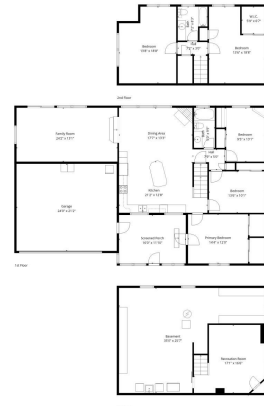
TOTAL: 2202 sq. ft.
 Basement: 269 sq. ft., 1st floor: 1444 sq. ft., 2nd floor: 489 sq. ft.
 EXCLUDED AREAS: BASEMENT: 626 sq. ft., SCREENED PORCH: 189 sq. ft., GARAGE: 508 sq. ft.,
 LOW CEILING: 144 sq. ft., WALLS: 251 sq. ft.
Measurements are Estimated And Are Not A Replacement For a Licensed Surveyor.



TOTAL: 2202 sq. ft.
 Basement: 269 sq. ft., 1st floor: 1444 sq. ft., 2nd floor: 489 sq. ft.
 EXCLUDED AREAS: BASEMENT: 626 sq. ft., SCREENED PORCH: 189 sq. ft., GARAGE: 508 sq. ft.,
 LOW CEILING: 144 sq. ft., WALLS: 251 sq. ft.
Measurements are Estimated And Are Not A Replacement For a Licensed Surveyor.



TOTAL: 2202 sq. ft.
 Basement: 269 sq. ft., 1st floor: 1444 sq. ft., 2nd floor: 489 sq. ft.
 EXCLUDED AREAS: BASEMENT: 626 sq. ft., SCREENED PORCH: 189 sq. ft., GARAGE: 508 sq. ft.,
 LOW CEILING: 144 sq. ft., WALLS: 251 sq. ft.
Measurements are Estimated And Are Not A Replacement For a Licensed Surveyor.



TOTAL: 2202 sq. ft.
 Basement: 269 sq. ft., 1st floor: 1444 sq. ft., 2nd floor: 489 sq. ft.
 EXCLUDED AREAS: BASEMENT: 626 sq. ft., SCREENED PORCH: 189 sq. ft., GARAGE: 508 sq. ft.,
 LOW CEILING: 144 sq. ft., WALLS: 251 sq. ft.
Measurements are Estimated And Are Not A Replacement For a Licensed Surveyor.

website: www.AffinityRealEstate.com | email: info@affinityrealestate.com | office: 218-237-3333 | fax: 218-237-3377



\$349,900
 MLS 7104804 Residential
 1112 Pine Tree Boulevard
 Little Falls MN 56345