



MLS 7104902 Land

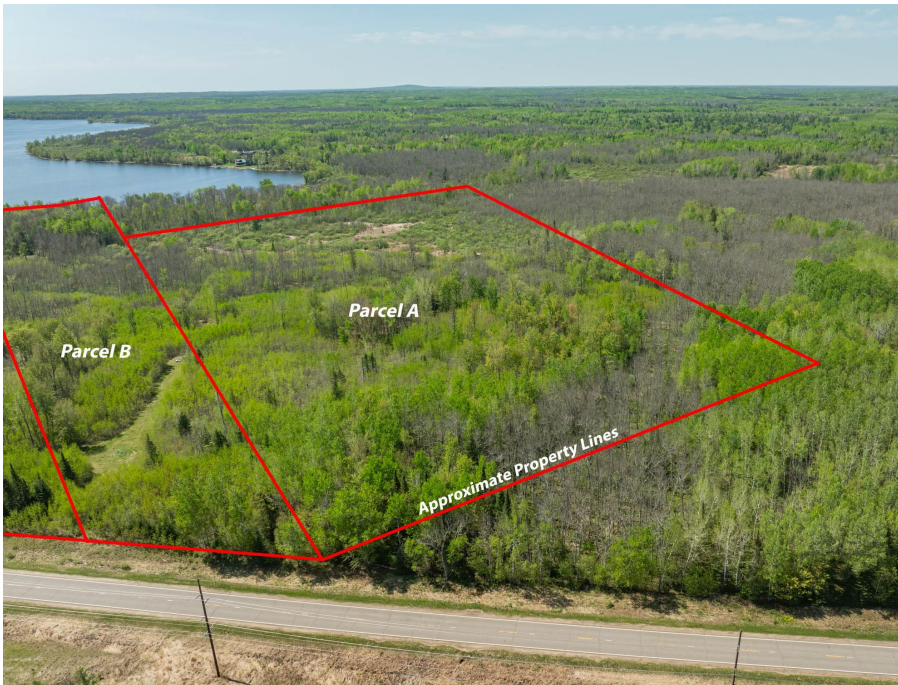
\$98,000

19.6 Acres

Raw Land

TBD Splithand Road
Grand Rapids MN 55744

Status: Active



Description:

Nearly 20 acres of privacy just minutes from Grand Rapids! If you've been searching for the perfect place to build your dream home, cabin, or Northwoods getaway, this beautiful wooded property deserves a look. Offering 19.6 acres of mature trees, rolling terrain, and outstanding privacy, you'll have plenty of room to design exactly what you've envisioned while still being just minutes from all the conveniences of Grand Rapids.

Enjoy nearby Splithand Lake, countless recreational opportunities, and easy access to fishing, ATV trails, snowmobiling, hunting, and everything that makes northern Minnesota special. Whether you're looking for a private homesite, recreational property, or long-term investment, opportunities like this are becoming harder to find.

Bring your plans and make this incredible piece of Itasca County your own. Adjoining lots (B & C) are also available for sale if you're looking for more land and/or waterfront opportunities!

Additional Details:

Lot Acres	19.6
Lot Dimensions	655x1313
School District	318
Taxes	\$432
Taxes with Assessments	\$432
Tax Year	2026

Additional Features:

Driving Directions:

S on US Hwy 169, L on Co Rd 67, R on Splithand Rd (68) to sign on right.



Listed By:
Real Broker, LLC

Affinity Real Estate Inc. participates in the Regional Multiple Listing Service of Minnesota, Inc Broker Reciprocity (sm) program, allowing us to display other broker's listings on our website. All properties are subject to prior sale, change or withdrawal.



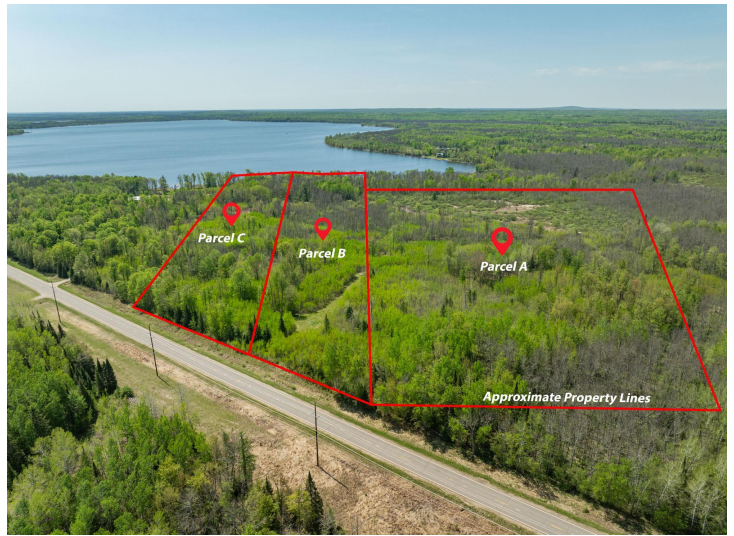
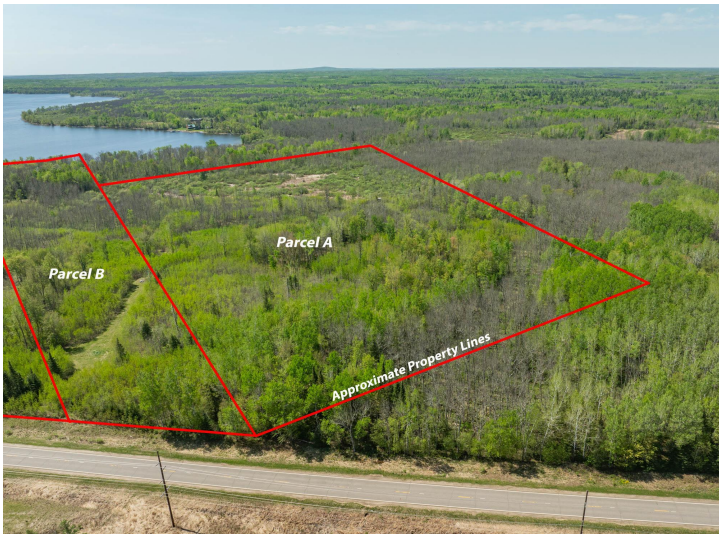
Call Affinity Real Estate

218-237-3333

info@affinityrealestate.com



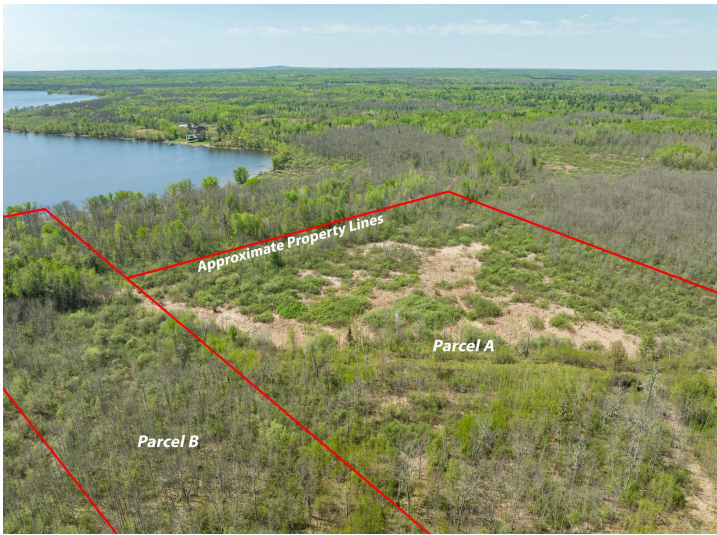
Affinity Real Estate - 600 Park Avenue South - Park Rapids MN 56470



website: www.AffinityRealEstate.com | email: info@affinityrealestate.com | office: 218-237-3333 | fax:218-237-3377



\$98,000
MLS 7104902 Land
TBD Splithand Road
Grand Rapids MN 55744



website: www.AffinityRealEstate.com | email: info@affinityrealestate.com | office: 218-237-3333 | fax:218-237-3377



\$98,000
MLS 7104902 Land
TBD Splithand Road
Grand Rapids MN 55744