



MLS 7104918 Land

\$98,000

8.6 Acres
Raw Land

t-b-d Splithand Rd
Grand Rapids MN 55744

Status: Active

Description:

With 223 feet of shoreline on Splithand Lake and 8.6 beautifully wooded acres, this exceptional property offers the perfect setting to build your dream home, cabin, or private getaway. Surrounded by mature trees and abundant wildlife, you'll enjoy the peace and privacy of country living while still being only a short drive from Grand Rapids.

Splithand Lake is well known for excellent fishing and year-round outdoor recreation. From boating and kayaking in the summer to nearby ATV trails, snowmobiling, hunting, hiking, and countless outdoor adventures, you'll be surrounded by everything that makes northern Minnesota such a special place to call home.

Imagine ending each day watching the sunset from your own shoreline, gathering around the campfire with family and friends, and creating memories that will last for generations.

Additional adjoining parcels are also available for purchase, offering a unique opportunity to own even more acreage or lake frontage.

Come walk the property and experience everything this incredible lakefront setting has to offer.

Additional Details:

Lot Acres	8.6
Lot Dimensions	1210x220
School District	318
Taxes	\$432
Taxes with Assessments	\$432
Tax Year	2026

Additional Features:

Driving Directions:

S on US Hwy 169, L on Co Rd 67, R on Splithand Rd (68) to sign on right.



Listed By:
Real Broker, LLC

Affinity Real Estate Inc. participates in the Regional Multiple Listing Service of Minnesota, Inc Broker Reciprocity (sm) program, allowing us to display other broker's listings on our website. All properties are subject to prior sale, change or withdrawal.



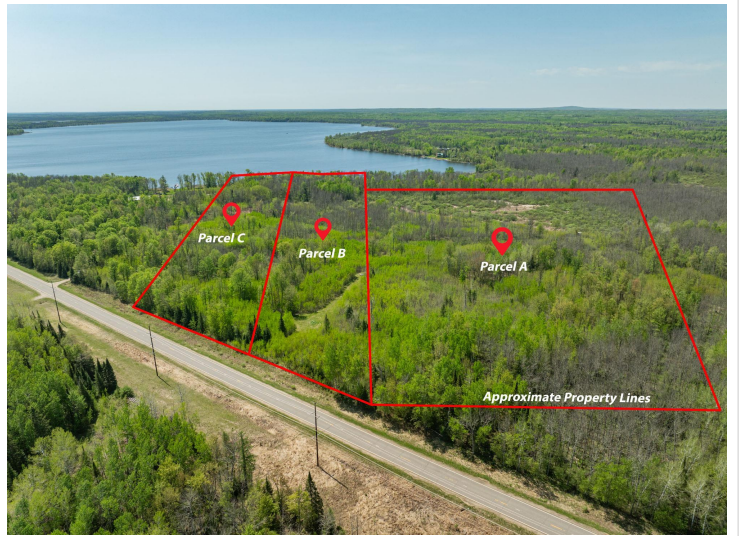
Call Affinity Real Estate

218-237-3333

info@affinityrealestate.com



Affinity Real Estate - 600 Park Avenue South - Park Rapids MN 56470



website: www.AffinityRealEstate.com | email: info@affinityrealestate.com | office: 218-237-3333 | fax:218-237-3377



\$98,000
MLS 7104918 Land
t-b-d Splithand Rd
Grand Rapids MN 55744