



MLS 7104921 Lake Land

**\$98,000**

**Description:**

Your own slice of lakefront paradise awaits.

With 222 feet of shoreline on Splithand Lake and over 9 wooded acres, this beautiful parcel offers the perfect combination of privacy, recreation, and convenience. Build your dream home or cabin surrounded by mature trees while enjoying peaceful lake views and direct access to one of the area's favorite fishing lakes.

Splithand Lake is well known for excellent fishing and year-round outdoor recreation, while Grand Rapids is just a short drive away for shopping, dining, and everyday conveniences. You'll be right in the heart of everything northern Minnesota is all about, fishing, hunting, ATV trails, snowmobiling, hiking, and more.

Whether you picture mornings with coffee overlooking the water, afternoons casting a line from your shoreline, or evenings around the campfire, this property offers the opportunity to build the lifestyle you've been dreaming about.

Additional adjoining parcels are also available for purchase, offering a unique opportunity to own even more acreage or lake frontage.

If you've been waiting for the right lake lot, this one is worth a closer look.

**Additional Details:**

Lot Acres	9.2
Lot Dimensions	1210x220
School District	318
Taxes	\$432
Taxes with Assessments	\$432
Tax Year	2026

**Additional Features:**

 Listed By:  
Real Broker LLC  
on Co Rd 67, R on Splithand Rd (68) to sign on

Affinity Real Estate Inc. participates in the Regional Multiple Listing Service of Minnesota, Inc Broker Reciprocity (sm) program, allowing us to display other broker's listings on our website. All properties are subject to prior sale, change or withdrawal.



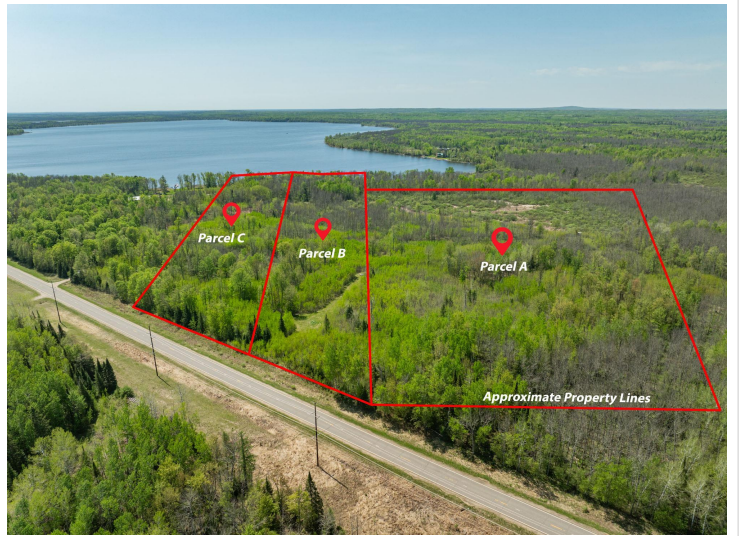
**Call Affinity Real Estate**

**218-237-3333**

**info@affinityrealestate.com**



**Affinity Real Estate - 600 Park Avenue South - Park Rapids MN 56470**



website: [www.AffinityRealEstate.com](http://www.AffinityRealEstate.com) | email: [info@affinityrealestate.com](mailto:info@affinityrealestate.com) | office: 218-237-3333 | fax: 218-237-3377



**\$98,000**  
MLS 7104921 Lake Land  
TBD Splithand Rd  
Grand Rapids MN 55744