



MLS 7104958 Lake Land

\$40,000

Description:

Escape to the peace and privacy of this beautiful 5 acre wooded property featuring approximately 200+- feet of frontage on Pine Lake. Tucked away in a serene setting just down the road from White Earth Lake, this parcel offers the perfect opportunity to build your dream home, cabin, or weekend retreat. With no covenants, you'll have the freedom to create the property you've always envisioned. Whether you're looking for a private getaway or an investment in lake country, this is a rare opportunity to own a slice of Minnesota's Northwoods.


Additional Details:

Lot Acres	5
Lot Dimensions	irr
School District	435
Taxes	\$112
Taxes with Assessments	\$112
Tax Year	2026

Additional Features:

Driving Directions:

from outside Callaway, head east on Co Hwy 14, left at stop sign on to Co Hwy 21. 7.1 miles, right onto County Rd 34 - .4 miles, left back onto Co Rd 21. 4.2 miles, eight onto 400th St/139 1.7 miles property on both sides of road. Watch for signs



Listed By:
REMAX Lakes Region

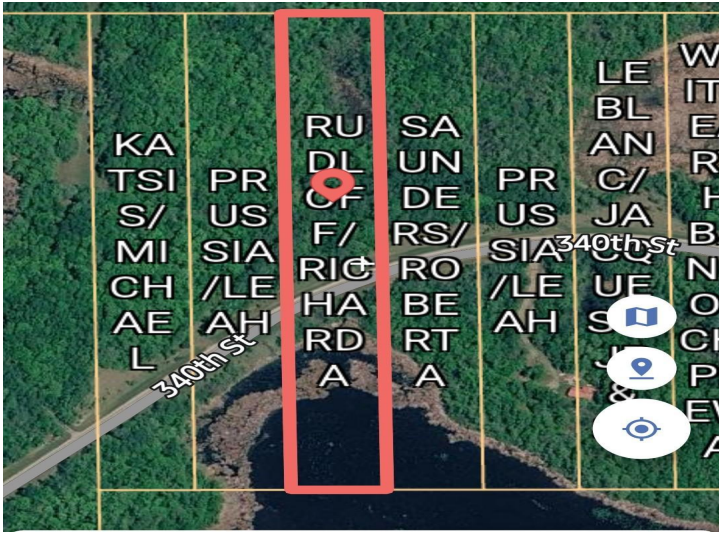
Affinity Real Estate Inc. participates in the Regional Multiple Listing Service of Minnesota, Inc Broker Reciprocity (sm) program, allowing us to display other broker's listings on our website. All properties are subject to prior sale, change or withdrawal.



Call Affinity Real Estate
218-237-3333
info@affinityrealestate.com




Affinity Real Estate - 600 Park Avenue South - Park Rapids MN 56470



website: www.AffinityRealEstate.com | email: info@affinityrealestate.com | office: 218-237-3333 | fax:218-237-3377



\$40,000
 MLS 7104958 Lake Land
 TBD 400th Street
 Waubun MN 56589



website: www.AffinityRealEstate.com | email: info@affinityrealestate.com | office: 218-237-3333 | fax:218-237-3377



\$40,000
MLS 7104958 Lake Land
TBD 400th Street
Waubun MN 56589

website: www.AffinityRealEstate.com | email: info@affinityrealestate.com | office: 218-237-3333 | fax:218-237-3377



\$40,000
MLS 7104958 Lake Land
TBD 400th Street
Waubun MN 56589