



MLS 7105045 Lake Home

**\$774,900**

1,728 sq ft  
3 bedrooms  
2 baths

33846 Pickerel Drive  
Richville MN 56576

Waterfront: Pickerel Lake (Maine Twp.)

Status: Active

**Description:**

Welcome to Pickerel Lake, where easy single level living meets the kind of lake property everyone is looking for. This 3 bedroom, 2 bathroom home sits on 50 feet of level, riprapped shoreline along sought after Pickerel Lake and offers comfort, function, and incredible year round opportunity. Built in the 1990s, the home features low maintenance steel siding, an efficient air to air heat pump, 6 panel doors, solid surface counters, and a spacious primary suite with private bath. The great room is filled with natural light from large windows that frame full lake views, while the deck invites you to step outside and take in the lake life. Pickerel Lake spans 848 acres and reaches depths of 78 feet, making it a favorite destination for boating, fishing, swimming, and relaxing at the water. Adding even more value is the 13 acre backlot with an insulated 2+ stall metal shop featuring both heat and air conditioning, giving you room for storage, hobbies, equipment, or future possibilities. This is more than a lake home, it is your complete lake life package.

**Additional Details:**

|                        |           |
|------------------------|-----------|
| Year Built             | 1994      |
| Lot Acres              | 14.05     |
| Lot Dimensions         | Irregular |
| Garage Stalls          | 2         |
| School District        | 542       |
| Taxes                  | \$2,026   |
| Taxes with Assessments | \$2,026   |
| Tax Year               | 2026      |

**Additional Features:**

**Basement:** Block, Crawl Space, Full **Fuel:** Electric, Propane **Garage:** 2 **Heat:** Forced Air, Fireplace(s), Heat Pump, Other **Sewer:** Shared Septic, Tank with Drainage Field **Water:** Well **Air Conditioning:** Central Air

**Driving Directions:**

From Richville, head W toward 2nd Ave and continue onto Co Hwy 14. Turn W onto Co Hwy 32 then W onto N Pickerel Dr until you reach the property.



Listed By:  
Keller Williams Realty Professionals

Affinity Real Estate Inc. participates in the Regional Multiple Listing Service of Minnesota, Inc Broker Reciprocity (sm) program, allowing us to display other broker's listings on our website. All properties are subject to prior sale, change or withdrawal.



**Call Affinity Real Estate**

**218-237-3333**

**info@affinityrealestate.com**



**Affinity Real Estate - 600 Park Avenue South - Park Rapids MN 56470**



website: [www.AffinityRealEstate.com](http://www.AffinityRealEstate.com) | email: [info@affinityrealestate.com](mailto:info@affinityrealestate.com) | office: 218-237-3333 | fax: 218-237-3377

**Affinity**  
REAL ESTATE INC

**\$774,900**  
MLS 7105045 Lake Home  
33846 Pickerel Drive  
Richville MN 56576



website: [www.AffinityRealEstate.com](http://www.AffinityRealEstate.com) | email: [info@affinityrealestate.com](mailto:info@affinityrealestate.com) | office: 218-237-3333 | fax: 218-237-3377

**Affinity**  
REAL ESTATE INC

**\$774,900**  
MLS 7105045 Lake Home  
33846 Pickerel Drive  
Richville MN 56576



website: [www.AffinityRealEstate.com](http://www.AffinityRealEstate.com) | email: [info@affinityrealestate.com](mailto:info@affinityrealestate.com) | office: 218-237-3333 | fax: 218-237-3377

**Affinity**  
REAL ESTATE INC

**\$774,900**  
MLS 7105045 Lake Home  
33846 Pickerel Drive  
Richville MN 56576



website: [www.AffinityRealEstate.com](http://www.AffinityRealEstate.com) | email: [info@affinityrealestate.com](mailto:info@affinityrealestate.com) | office: 218-237-3333 | fax:218-237-3377

**Affinity**  
REAL ESTATE INC

**\$774,900**  
MLS 7105045 Lake Home  
33846 Pickerel Drive  
Richville MN 56576



website: [www.AffinityRealEstate.com](http://www.AffinityRealEstate.com) | email: [info@affinityrealestate.com](mailto:info@affinityrealestate.com) | office: 218-237-3333 | fax: 218-237-3377

**Affinity**  
REAL ESTATE INC

**\$774,900**  
MLS 7105045 Lake Home  
33846 Pickerel Drive  
Richville MN 56576



website: [www.AffinityRealEstate.com](http://www.AffinityRealEstate.com) | email: [info@affinityrealestate.com](mailto:info@affinityrealestate.com) | office: 218-237-3333 | fax: 218-237-3377

**Affinity**  
REAL ESTATE INC

**\$774,900**  
MLS 7105045 Lake Home  
33846 Pickerel Drive  
Richville MN 56576



website: [www.AffinityRealEstate.com](http://www.AffinityRealEstate.com) | email: [info@affinityrealestate.com](mailto:info@affinityrealestate.com) | office: 218-237-3333 | fax: 218-237-3377

**Affinity**  
REAL ESTATE INC

**\$774,900**  
MLS 7105045 Lake Home  
33846 Pickerel Drive  
Richville MN 56576



website: [www.AffinityRealEstate.com](http://www.AffinityRealEstate.com) | email: [info@affinityrealestate.com](mailto:info@affinityrealestate.com) | office: 218-237-3333 | fax: 218-237-3377

**Affinity**  
REAL ESTATE INC

**\$774,900**  
MLS 7105045 Lake Home  
33846 Pickerel Drive  
Richville MN 56576



website: [www.AffinityRealEstate.com](http://www.AffinityRealEstate.com) | email: [info@affinityrealestate.com](mailto:info@affinityrealestate.com) | office: 218-237-3333 | fax: 218-237-3377

**Affinity**  
REAL ESTATE INC

**\$774,900**  
MLS 7105045 Lake Home  
33846 Pickerel Drive  
Richville MN 56576



website: [www.AffinityRealEstate.com](http://www.AffinityRealEstate.com) | email: [info@affinityrealestate.com](mailto:info@affinityrealestate.com) | office: 218-237-3333 | fax:218-237-3377

**Affinity**  
REAL ESTATE INC

**\$774,900**  
MLS 7105045 Lake Home  
33846 Pickerel Drive  
Richville MN 56576



website: [www.AffinityRealEstate.com](http://www.AffinityRealEstate.com) | email: [info@affinityrealestate.com](mailto:info@affinityrealestate.com) | office: 218-237-3333 | fax:218-237-3377



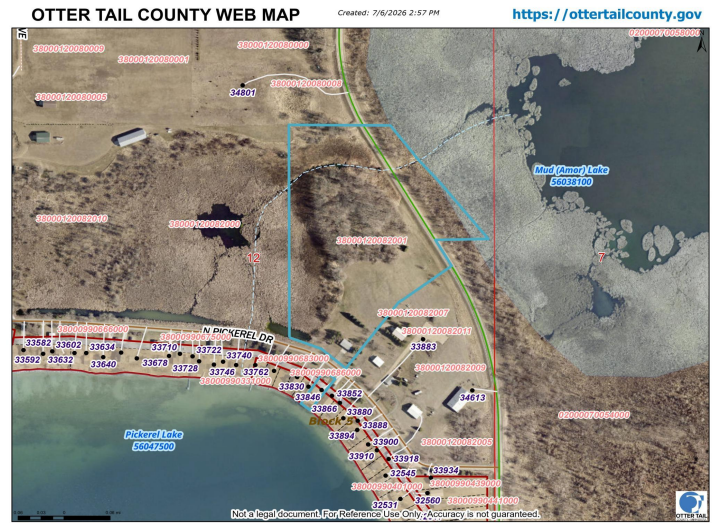
**\$774,900**  
MLS 7105045 Lake Home  
33846 Pickerel Drive  
Richville MN 56576



website: [www.AffinityRealEstate.com](http://www.AffinityRealEstate.com) | email: [info@affinityrealestate.com](mailto:info@affinityrealestate.com) | office: 218-237-3333 | fax:218-237-3377



**\$774,900**  
MLS 7105045 Lake Home  
33846 Pickerel Drive  
Richville MN 56576



website: [www.AffinityRealEstate.com](http://www.AffinityRealEstate.com) | email: [info@affinityrealestate.com](mailto:info@affinityrealestate.com) | office: 218-237-3333 | fax:218-237-3377



**\$774,900**  
 MLS 7105045 Lake Home  
 33846 Pickerel Drive  
 Richville MN 56576