



MLS 7105217 Residential

\$524,900

2,749 sq ft
5 bedrooms
3 baths

33921 Wild Wind Ranch Drive
Crosslake MN 56442

Status: Active

Description:

This well-appointed home offer 5+ bedrooms, 3 bathrooms, 2 living areas and an attached 3 stall garage which is insulated and heated. The 40x26 shop in the back offers plenty of space for parking, storage and toys. In the kitchen you will find custom cabinetry topped with granite and an extra bar/sink area. Enjoy the private 1.26 acre lot from the back deck, firepit or fenced garden area. The home and attached garage are very energy efficient with spray foam insulation throughout and professionally serviced HVAC and in-floor heating systems. The property has been extremely well maintained with recent additions such as a new roof, in-ground irrigation system and blacktop driveway.

Additional Details:

Year Built	2009
Lot Acres	1.26
Lot Dimensions	105x365x195x365
Garage Stalls	8
School District	186
Taxes	\$2,760
Taxes with Assessments	\$2,735
Tax Year	2026

Additional Features:

Basement: Drain Tiled, Egress Window(s), Finished, Full, Walkout **Fuel:** Natural Gas, Wood **Garage:** 8 **Heat:** Boiler, Forced Air, Fireplace(s), In-Floor Heating **Sewer:** Private Sewer, Tank with Drainage Field **Water:** 4-Inch Submersible, Drilled, Well **Air Conditioning:** Central Air

Driving Directions:

Heading North on Co Rd 3 into Crosslake, turn left onto Co Rd 103. Then first left onto Wild Wind Ranch Dr. House is on the right.



Listed By:
NextHome Horizons

Affinity Real Estate Inc. participates in the Regional Multiple Listing Service of Minnesota, Inc Broker Reciprocity (sm) program, allowing us to display other broker's listings on our website. All properties are subject to prior sale, change or withdrawal.



Call Affinity Real Estate

218-237-3333

info@affinityrealestate.com



Affinity Real Estate - 600 Park Avenue South - Park Rapids MN 56470



website: www.AffinityRealEstate.com | email: info@affinityrealestate.com | office: 218-237-3333 | fax:218-237-3377



\$524,900
MLS 7105217 Residential
33921 Wild Wind Ranch
Drive
Crosslake MN 56442



website: www.AffinityRealEstate.com | email: info@affinityrealestate.com | office: 218-237-3333 | fax: 218-237-3377

Affinity
REAL ESTATE INC

\$524,900
MLS 7105217 Residential
33921 Wild Wind Ranch
Drive
Crosslake MN 56442



website: www.AffinityRealEstate.com | email: info@affinityrealestate.com | office: 218-237-3333 | fax: 218-237-3377

Affinity
REAL ESTATE INC

\$524,900
MLS 7105217 Residential
33921 Wild Wind Ranch
Drive
Crosslake MN 56442



website: www.AffinityRealEstate.com | email: info@affinityrealestate.com | office: 218-237-3333 | fax:218-237-3377

Affinity
REAL ESTATE INC

\$524,900
MLS 7105217 Residential
33921 Wild Wind Ranch
Drive
Crosslake MN 56442



website: www.AffinityRealEstate.com | email: info@affinityrealestate.com | office: 218-237-3333 | fax: 218-237-3377



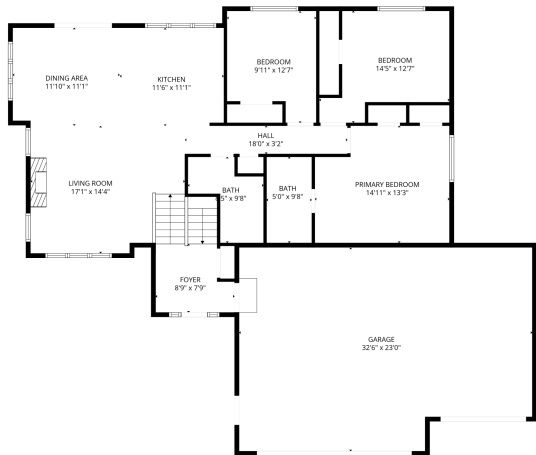
\$524,900
MLS 7105217 Residential
33921 Wild Wind Ranch
Drive
Crosslake MN 56442



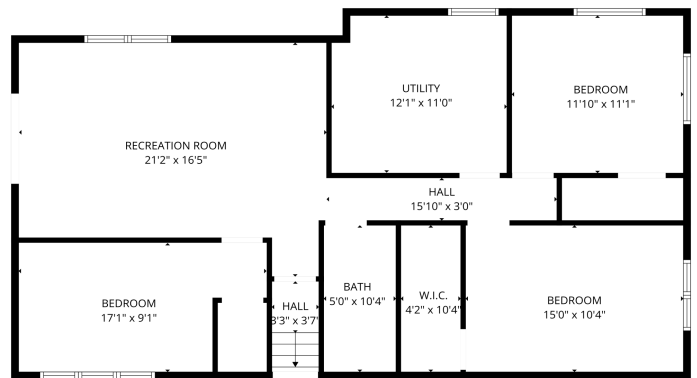
website: www.AffinityRealEstate.com | email: info@affinityrealestate.com | office: 218-237-3333 | fax: 218-237-3377

Affinity
REAL ESTATE INC

\$524,900
MLS 7105217 Residential
33921 Wild Wind Ranch
Drive
Crosslake MN 56442



FLOOR PLAN CREATED BY CUBICASA APP. MEASUREMENTS DEEMED HIGHLY RELIABLE BUT NOT GUARANTEED.

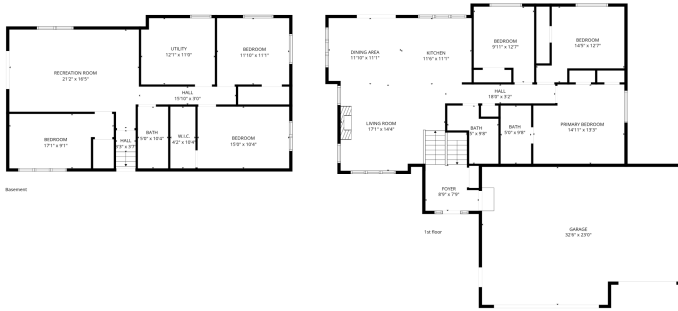


FLOOR PLAN CREATED BY CUBICASA APP. MEASUREMENTS DEEMED HIGHLY RELIABLE BUT NOT GUARANTEED.

website: www.AffinityRealEstate.com | email: info@affinityrealestate.com | office: 218-237-3333 | fax: 218-237-3377



\$524,900
 MLS 7105217 Residential
 33921 Wild Wind Ranch
 Drive
 Crosslake MN 56442



FLOOR PLAN CREATED BY CURICASA APP. MEASUREMENTS DEEMED HIGHLY RELIABLE BUT NOT GUARANTEED.

website: www.AffinityRealEstate.com | email: info@affinityrealestate.com | office: 218-237-3333 | fax:218-237-3377



\$524,900
 MLS 7105217 Residential
 33921 Wild Wind Ranch
 Drive
 Crosslake MN 56442