



MLS 7105383 Land

\$42,000

3 Acres
Raw Land

TBD Placid Drive
Dent MN 56528

Status: Active

Description:

Otter Tail County: This 3 acre lot is near Maplewood State Park and dozens of excellent recreational lakes making it a terrific spot to get away from it all. With no restrictive covenants you can set up your camping site to use it as for now and make plans for a future storage shed or house. This 3-acre lot (parcel C) overlooks Pickerel Lake just West of Dent.

Additional Details:

Lot Acres	3
Lot Dimensions	162x502x275x468
School District	549
Taxes	(unreported)
Taxes with Assessments	(unreported)
Tax Year	2026

Additional Features:

Driving Directions:

from Dent: 2 miles West on Hwy 108, left on Placid Dr, follow signs.



Listed By:
Coldwell Banker Preferred Partners

Affinity Real Estate Inc. participates in the Regional Multiple Listing Service of Minnesota, Inc Broker Reciprocity (sm) program, allowing us to display other broker's listings on our website. All properties are subject to prior sale, change or withdrawal.



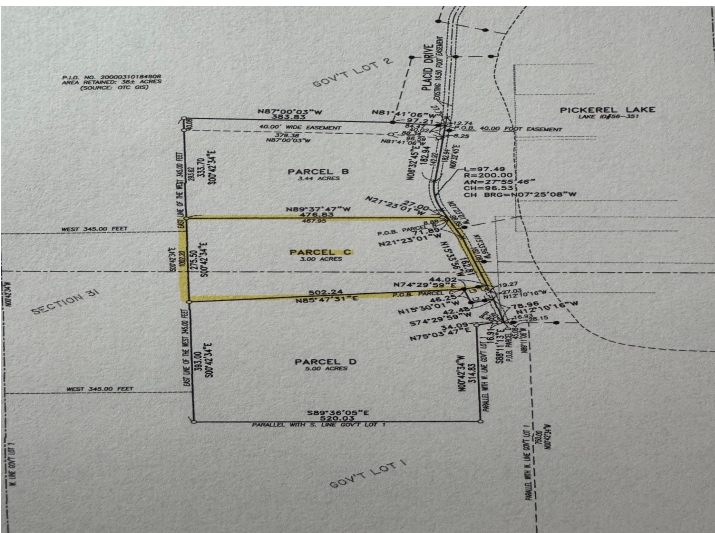
Call Affinity Real Estate

218-237-3333

info@affinityrealestate.com



Affinity Real Estate - 600 Park Avenue South - Park Rapids MN 56470



website: www.AffinityRealEstate.com | email: info@affinityrealestate.com | office: 218-237-3333 | fax: 218-237-3377



\$42,000
 MLS 7105383 Land
 TBD Placid Drive
 Dent MN 56528