



MLS 7105402 Residential

\$189,900

1,782 sq ft
4 bedrooms
2 baths

6514 Estate Drive
Brainerd MN 56401

Status: Coming Soon

Description:

This 4-bedroom, 2-bath home offers a great floor plan with plenty of space and a private, level yard. Conveniently located less than 10 minutes from Brainerd and Baxter, you'll enjoy convenient access to shopping, dining, entertainment, North Central Speedway, and the four-season recreation the Brainerd Lakes Area has to offer.

Additional Details:

Year Built	2001
Lot Acres	0.48
Lot Dimensions	111x154x157x156
School District	181
Taxes	\$780
Taxes with Assessments	\$780
Tax Year	2026

Additional Features:

Basement: None **Fuel:** Natural Gas **Heat:** Forced Air **Sewer:** Septic System Compliant - Yes **Water:** Shared System **Air Conditioning:** None

Driving Directions:

Business 371 South from Downtown Brainerd to Rice Depot, home located in adjacent mfg'd home park.



Listed By:
eXp Realty

Affinity Real Estate Inc. participates in the Regional Multiple Listing Service of Minnesota, Inc Broker Reciprocity (sm) program, allowing us to display other broker's listings on our website. All properties are subject to prior sale, change or withdrawal.



Call Affinity Real Estate

218-237-3333

info@affinityrealestate.com



Affinity Real Estate - 600 Park Avenue South - Park Rapids MN 56470



website: www.AffinityRealEstate.com | email: info@affinityrealestate.com | office: 218-237-3333 | fax: 218-237-3377

Affinity
REAL ESTATE INC

\$189,900
MLS 7105402 Residential
6514 Estate Drive
Brainerd MN 56401



website: www.AffinityRealEstate.com | email: info@affinityrealestate.com | office: 218-237-3333 | fax: 218-237-3377

Affinity
REAL ESTATE INC

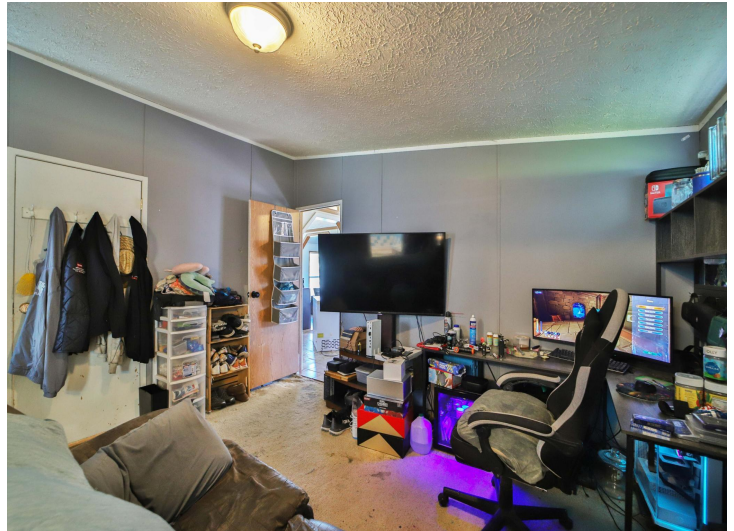
\$189,900
MLS 7105402 Residential
6514 Estate Drive
Brainerd MN 56401



website: www.AffinityRealEstate.com | email: info@affinityrealestate.com | office: 218-237-3333 | fax:218-237-3377

Affinity
REAL ESTATE INC

\$189,900
MLS 7105402 Residential
6514 Estate Drive
Brainerd MN 56401



website: www.AffinityRealEstate.com | email: info@affinityrealestate.com | office: 218-237-3333 | fax:218-237-3377

Affinity
REAL ESTATE INC

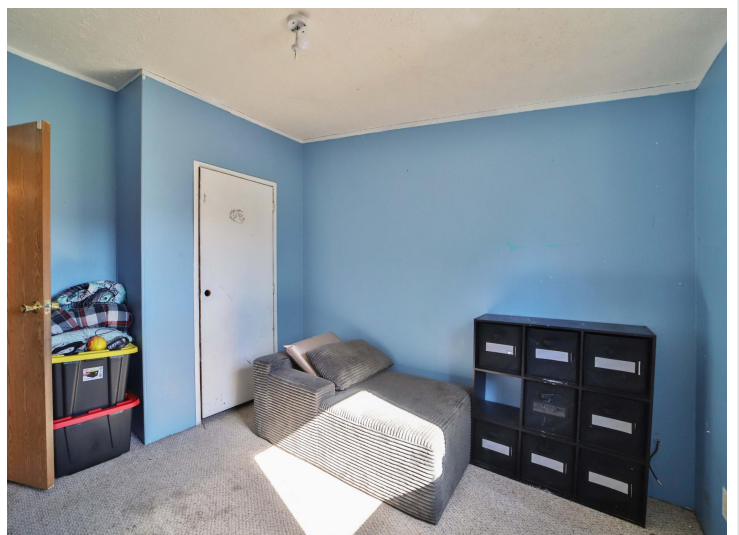
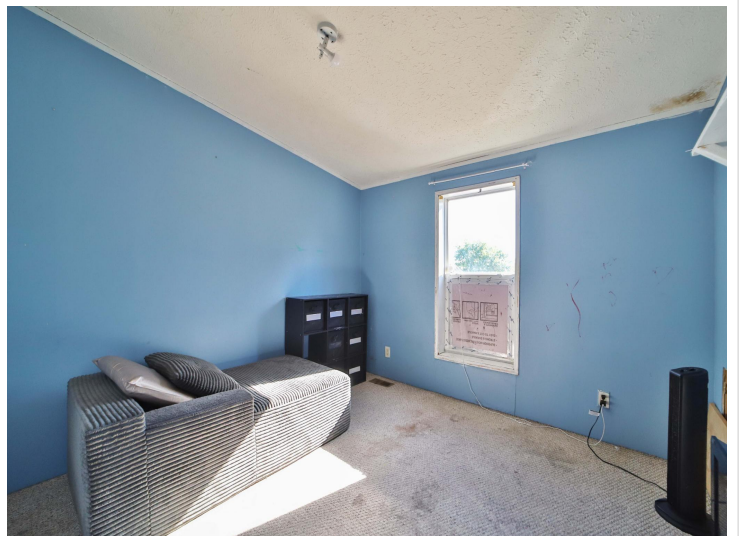
\$189,900
MLS 7105402 Residential
6514 Estate Drive
Brainerd MN 56401



website: www.AffinityRealEstate.com | email: info@affinityrealestate.com | office: 218-237-3333 | fax:218-237-3377



\$189,900
MLS 7105402 Residential
6514 Estate Drive
Brainerd MN 56401



website: www.AffinityRealEstate.com | email: info@affinityrealestate.com | office: 218-237-3333 | fax:218-237-3377

Affinity
REAL ESTATE INC

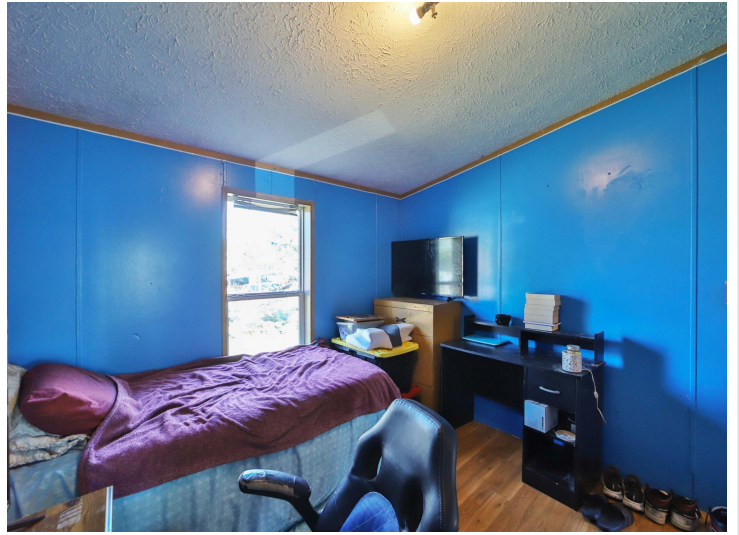
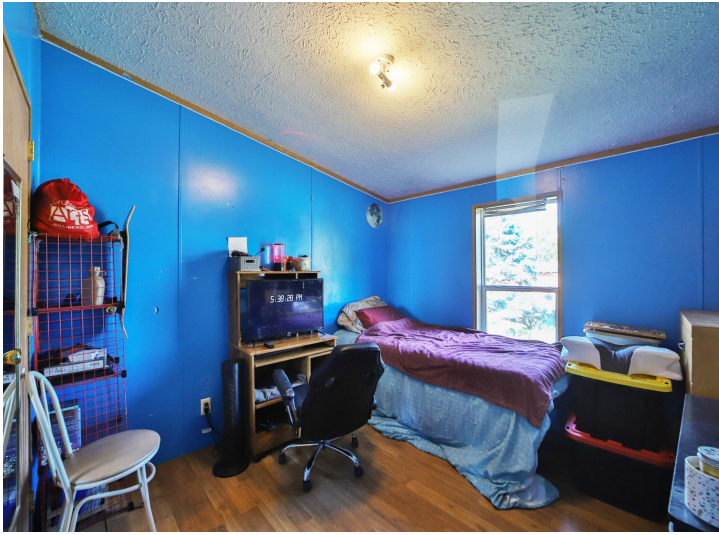
\$189,900
MLS 7105402 Residential
6514 Estate Drive
Brainerd MN 56401



website: www.AffinityRealEstate.com | email: info@affinityrealestate.com | office: 218-237-3333 | fax: 218-237-3377

Affinity
REAL ESTATE INC

\$189,900
MLS 7105402 Residential
6514 Estate Drive
Brainerd MN 56401



website: www.AffinityRealEstate.com | email: info@affinityrealestate.com | office: 218-237-3333 | fax:218-237-3377

Affinity
REAL ESTATE INC

\$189,900
MLS 7105402 Residential
6514 Estate Drive
Brainerd MN 56401



website: www.AffinityRealEstate.com | email: info@affinityrealestate.com | office: 218-237-3333 | fax:218-237-3377



\$189,900
MLS 7105402 Residential
6514 Estate Drive
Brainerd MN 56401



website: www.AffinityRealEstate.com | email: info@affinityrealestate.com | office: 218-237-3333 | fax:218-237-3377



\$189,900
MLS 7105402 Residential
6514 Estate Drive
Brainerd MN 56401