



MLS 7105403 Lake Home

**\$1,200,000**

3,907 sq ft  
4 bedrooms  
3 baths

12787 Braseth Bay Road  
Lake Park MN 56554

Waterfront: Upper Cormorant

Status: Active

**Description:**

This is a one of a kind property!!!! +- 815 ft. of shore front on Clean , Clear Upper Cormorant Lake!!! The property is located on a dead end road with a +- 6.2 acre lot. Built on this spacious lot is a well maintained 4500 sq. ft 4 bedroom , 3 bath home built in 2000. Featuring a 2 stall + attached garage, spacious living areas on the main floor, & through out the walk out full basement. Extra Storage/ garage/ shop in the 30' x 40' heated Foltz bldg. This is a rare once in a life time property! Don't miss this opportunity, give me a call for a private showing, Loren @ 218-841-4605!

**Additional Details:**

Year Built	2000
Lot Acres	6.2
Lot Dimensions	irregular
Garage Stalls	2
School District	2889
Taxes	\$5,160
Taxes with Assessments	\$5,160
Tax Year	2026

**Additional Features:**

**Fuel:** Propane **Heat:** Dual Fuel/Off Peak, Forced Air, Fireplace(s), In-Floor Heating

**Driving Directions:**

From State Hwy #10 south on County #1 to Braseth Bay Road (left turn, east to the dead end ) to address #12787 or from the "Road House Restaurant" w. on #4, 3.7 m. to Co. Hwy. #1, then 1/2 m. n. to Braseth Bay Rd. , 1 m. east to the dead end.



Listed By:  
Seifert Real Estate & Auction

Affinity Real Estate Inc. participates in the Regional Multiple Listing Service of Minnesota, Inc Broker Reciprocity (sm) program, allowing us to display other broker's listings on our website. All properties are subject to prior sale, change or withdrawal.



**Call Affinity Real Estate**

**218-237-3333**

**info@affinityrealestate.com**



**Affinity Real Estate - 600 Park Avenue South - Park Rapids MN 56470**



website: [www.AffinityRealEstate.com](http://www.AffinityRealEstate.com) | email: [info@affinityrealestate.com](mailto:info@affinityrealestate.com) | office: 218-237-3333 | fax:218-237-3377

**Affinity**  
REAL ESTATE INC

**\$1,200,000**  
MLS 7105403 Lake Home  
12787 Braseth Bay Road  
Lake Park MN 56554



website: [www.AffinityRealEstate.com](http://www.AffinityRealEstate.com) | email: [info@affinityrealestate.com](mailto:info@affinityrealestate.com) | office: 218-237-3333 | fax:218-237-3377



**\$1,200,000**  
MLS 7105403 Lake Home  
12787 Braseth Bay Road  
Lake Park MN 56554



website: [www.AffinityRealEstate.com](http://www.AffinityRealEstate.com) | email: [info@affinityrealestate.com](mailto:info@affinityrealestate.com) | office: 218-237-3333 | fax:218-237-3377



**\$1,200,000**  
MLS 7105403 Lake Home  
12787 Braseth Bay Road  
Lake Park MN 56554



website: [www.AffinityRealEstate.com](http://www.AffinityRealEstate.com) | email: [info@affinityrealestate.com](mailto:info@affinityrealestate.com) | office: 218-237-3333 | fax:218-237-3377



**\$1,200,000**  
MLS 7105403 Lake Home  
12787 Braseth Bay Road  
Lake Park MN 56554



website: [www.AffinityRealEstate.com](http://www.AffinityRealEstate.com) | email: [info@affinityrealestate.com](mailto:info@affinityrealestate.com) | office: 218-237-3333 | fax:218-237-3377

**Affinity**  
REAL ESTATE INC

**\$1,200,000**  
MLS 7105403 Lake Home  
12787 Braseth Bay Road  
Lake Park MN 56554



website: [www.AffinityRealEstate.com](http://www.AffinityRealEstate.com) | email: [info@affinityrealestate.com](mailto:info@affinityrealestate.com) | office: 218-237-3333 | fax:218-237-3377

**Affinity**  
REAL ESTATE INC

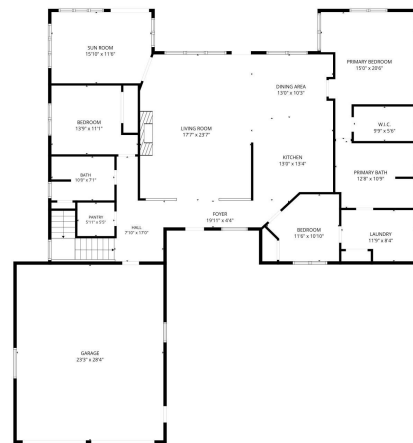
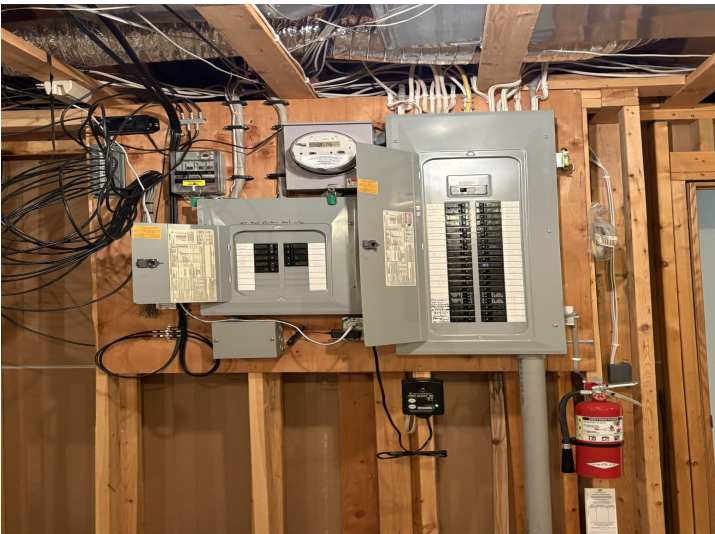
**\$1,200,000**  
MLS 7105403 Lake Home  
12787 Braseth Bay Road  
Lake Park MN 56554



website: [www.AffinityRealEstate.com](http://www.AffinityRealEstate.com) | email: [info@affinityrealestate.com](mailto:info@affinityrealestate.com) | office: 218-237-3333 | fax:218-237-3377

**Affinity**  
REAL ESTATE INC

**\$1,200,000**  
MLS 7105403 Lake Home  
12787 Braseth Bay Road  
Lake Park MN 56554

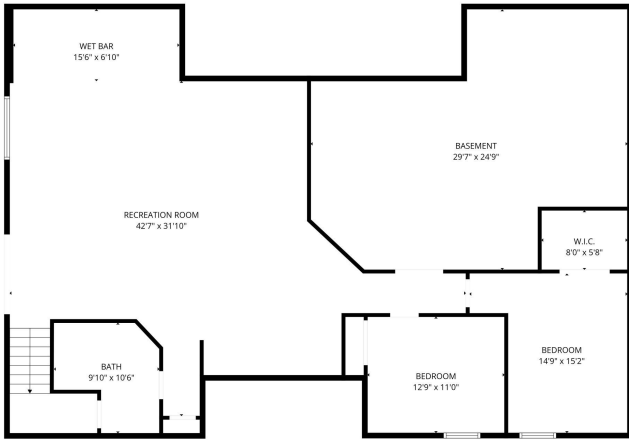


FLOOR PLAN CREATED BY CUBICASA APP. MEASUREMENTS DEEMED HIGHLY RELIABLE BUT NOT GUARANTEED.

website: [www.AffinityRealEstate.com](http://www.AffinityRealEstate.com) | email: [info@affinityrealestate.com](mailto:info@affinityrealestate.com) | office: 218-237-3333 | fax:218-237-3377



**\$1,200,000**  
 MLS 7105403 Lake Home  
 12787 Braseth Bay Road  
 Lake Park MN 56554



FLOOR PLAN CREATED BY CURICASA APP. MEASUREMENTS DEEMED HIGHLY RELIABLE BUT NOT GUARANTEED.

website: [www.AffinityRealEstate.com](http://www.AffinityRealEstate.com) | email: [info@affinityrealestate.com](mailto:info@affinityrealestate.com) | office: 218-237-3333 | fax:218-237-3377



**\$1,200,000**

MLS 7105403 Lake Home  
12787 Braseth Bay Road  
Lake Park MN 56554