



MLS 7105429 Residential

**\$58,000**

966 sq ft  
2 bedrooms  
1 baths

9902 Garden Lane  
Bemidji MN 56601

Status: Active

**Description:**

Beautiful 1.89 acre lot for sale with an older mobile home and a sturdy 2 stall garage in a private neighborhood just north of Bemidji. Being sold as-is. Come and take a walk around the property ~ potential abounds! There are 2 additional building lots being offered for sale too ~ scoop up all 3!

**Additional Details:**

|                        |         |
|------------------------|---------|
| Year Built             | 1972    |
| Lot Acres              | 1.89    |
| Lot Dimensions         | 220x370 |
| Garage Stalls          | 2       |
| School District        | 31      |
| Taxes                  | \$382   |
| Taxes with Assessments | \$382   |
| Tax Year               | 2026    |

**Additional Features:**

**Fuel:** Propane **Heat:** Forced Air

**Driving Directions:**

From Bemidji: Hwy 71 to N Garden Lane ~ turn right and follow to home on the left. Or, north on Birchmont (old 71) to Country club RD NE, turn left onto Country Club. Go 1/2 mile and turn left onto N Garden LN NE ~ follow to home on the right.



Listed By:  
Lake-N-Woods Realty

Affinity Real Estate Inc. participates in the Regional Multiple Listing Service of Minnesota, Inc Broker Reciprocity (sm) program, allowing us to display other broker's listings on our website. All properties are subject to prior sale, change or withdrawal.



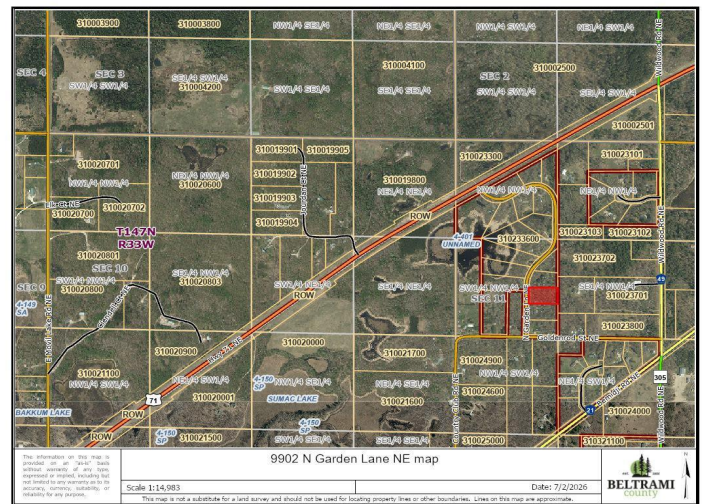
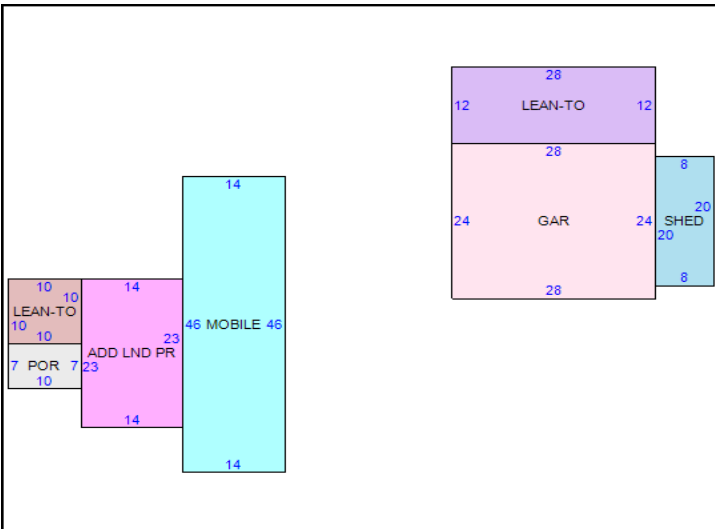
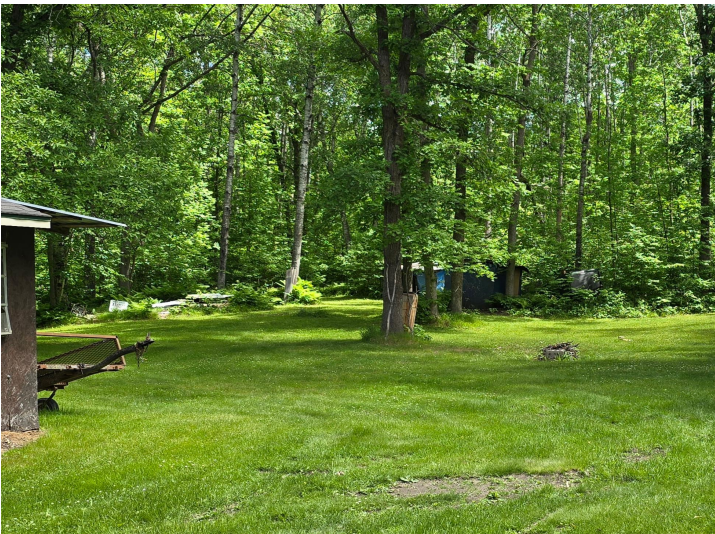
Call Affinity Real Estate

**218-237-3333**

[info@affinityrealestate.com](mailto:info@affinityrealestate.com)



Affinity Real Estate - 600 Park Avenue South - Park Rapids MN 56470



website: [www.AffinityRealEstate.com](http://www.AffinityRealEstate.com) | email: [info@affinityrealestate.com](mailto:info@affinityrealestate.com) | office: 218-237-3333 | fax:218-237-3377



**\$58,000**  
 MLS 7105429 Residential  
 9902 Garden Lane  
 Bemidji MN 56601



website: [www.AffinityRealEstate.com](http://www.AffinityRealEstate.com) | email: [info@affinityrealestate.com](mailto:info@affinityrealestate.com) | office: 218-237-3333 | fax:218-237-3377



**\$58,000**  
 MLS 7105429 Residential  
 9902 Garden Lane  
 Bemidji MN 56601