



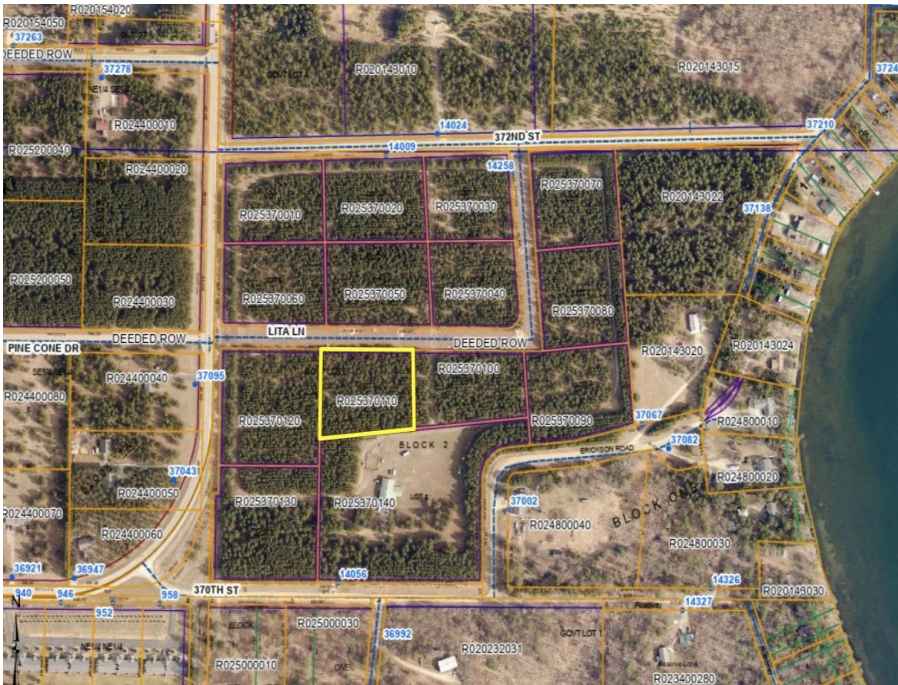
MLS 7105615 Land

**\$36,500**

1.88 Acres  
Raw Land

TBD Lita Lane  
Menahga MN 56464

Status: Active



**Description:**

Create the home you've always wanted on this beautiful 1.88-acre lot located within one of the area's newest developments just outside of Menahga. Situated on an interior lot, this property offers a peaceful setting with the convenience of blacktop road access and an easy drive to town. Building is made simple with natural gas from MN Energy, fiber optic internet through West Central, and electrical service from Todd-Wadena all available for hookup. Enjoy the perfect combination of country living and modern conveniences while designing a home that fits your lifestyle in this desirable new neighborhood.

**Additional Details:**

Lot Acres	1.88
Lot Dimensions	320x236x330x263
School District	821
Taxes	\$78
Taxes with Assessments	\$78
Tax Year	2026

**Additional Features:**

**Driving Directions:**

From Menahga, go east on Twin Lakes Rd. Take a left onto Lita Lane. Property is on the right.



Listed By:  
Keller Williams Realty Professionals

Affinity Real Estate Inc. participates in the Regional Multiple Listing Service of Minnesota, Inc Broker Reciprocity (sm) program, allowing us to display other broker's listings on our website. All properties are subject to prior sale, change or withdrawal.



Call Affinity Real Estate

**218-237-3333**

[info@affinityrealestate.com](mailto:info@affinityrealestate.com)



Affinity Real Estate - 600 Park Avenue South - Park Rapids MN 56470



website: [www.AffinityRealEstate.com](http://www.AffinityRealEstate.com) | email: [info@affinityrealestate.com](mailto:info@affinityrealestate.com) | office: 218-237-3333 | fax:218-237-3377



**\$36,500**  
MLS 7105615 Land  
TBD Lita Lane  
Menahga MN 56464