



MLS 7105617 Residential

\$214,900

1,450 sq ft
3 bedrooms
2 baths

25528 Blue Bonnet Road
Merrifield MN 56465

Status: Active

Description:

Escape to your own private retreat with this charming 3-bedroom, 2-bath home nestled on 2.79 beautifully landscaped acres. Surrounded by a park-like setting, this property offers exceptional privacy and scenic views in every direction. The meticulously maintained grounds feature tranquil fish ponds, creating a peaceful outdoor oasis perfect for relaxing or entertaining.

Inside, you'll find approximately 1,450 square feet of comfortable living space, along with the peace of mind that comes with a newer furnace. A spacious double detached garage provides plenty of room for vehicles, storage, and hobbies.

Located just across the road from Lake Edward, you'll enjoy the beauty of lakeside living with convenient access to boating, fishing, and year-round recreation while returning home to your own secluded haven. If you've been searching for a property that combines natural beauty, privacy, and convenience, this is one you won't want to miss!

Additional Details:

Year Built	1985
Lot Acres	2.78
Lot Dimensions	480x285x480x220
Garage Stalls	2
School District	182
Taxes	\$648
Taxes with Assessments	\$648
Tax Year	2026

Additional Features:

Basement: None **Fuel:** Natural Gas **Garage:** 2 **Heat:** Forced Air **Sewer:** Septic System Compliant - Yes **Water:** 4-Inch Submersible **Air Conditioning:** Central Air

Driving Directions:

From Brainerd, Hwy 25 to Cty 3 north to Left on Blue Bonnet road to house on right.



Listed By:
LPT Realty, LLC.

Affinity Real Estate Inc. participates in the Regional Multiple Listing Service of Minnesota, Inc Broker Reciprocity (sm) program, allowing us to display other broker's listings on our website. All properties are subject to prior sale, change or withdrawal.



Call Affinity Real Estate

218-237-3333

info@affinityrealestate.com



Affinity Real Estate - 600 Park Avenue South - Park Rapids MN 56470



website: www.AffinityRealEstate.com | email: info@affinityrealestate.com | office: 218-237-3333 | fax:218-237-3377

Affinity
REAL ESTATE INC

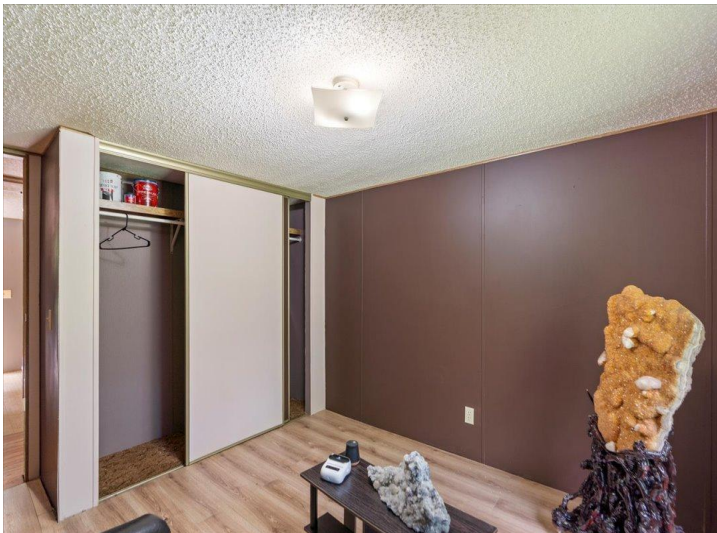
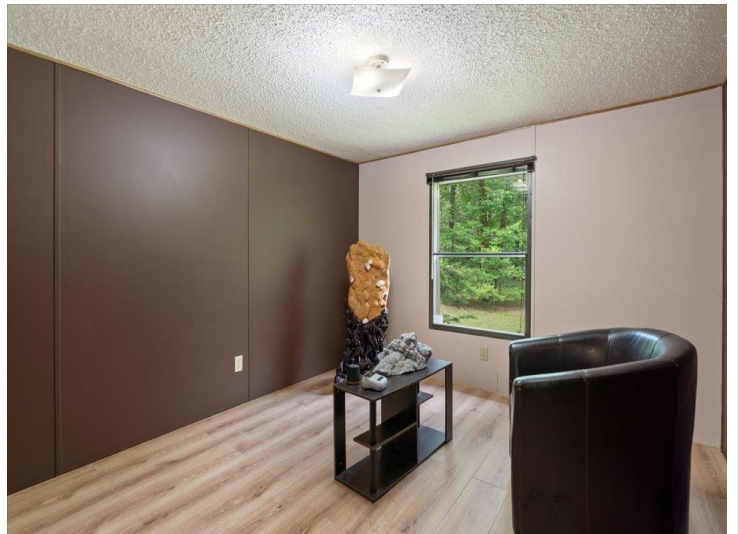
\$214,900
MLS 7105617 Residential
25528 Blue Bonnet Road
Merrifield MN 56465



website: www.AffinityRealEstate.com | email: info@affinityrealestate.com | office: 218-237-3333 | fax: 218-237-3377

Affinity
REAL ESTATE INC

\$214,900
MLS 7105617 Residential
25528 Blue Bonnet Road
Merrifield MN 56465



website: www.AffinityRealEstate.com | email: info@affinityrealestate.com | office: 218-237-3333 | fax:218-237-3377

Affinity
REAL ESTATE INC

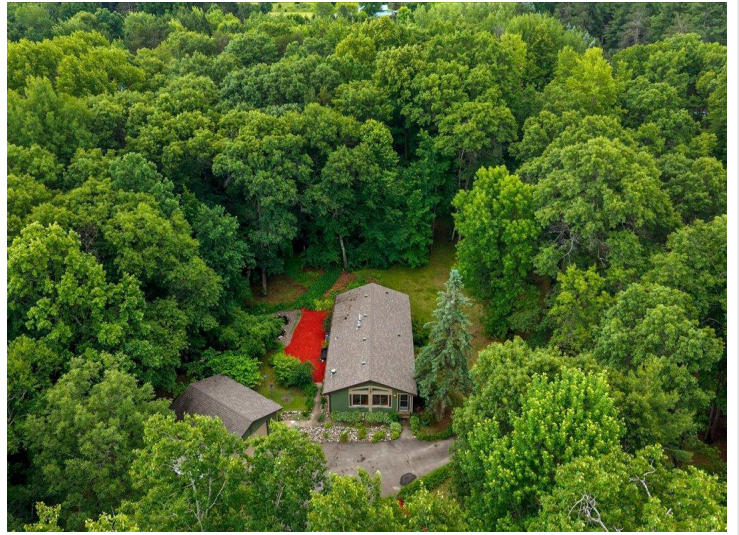
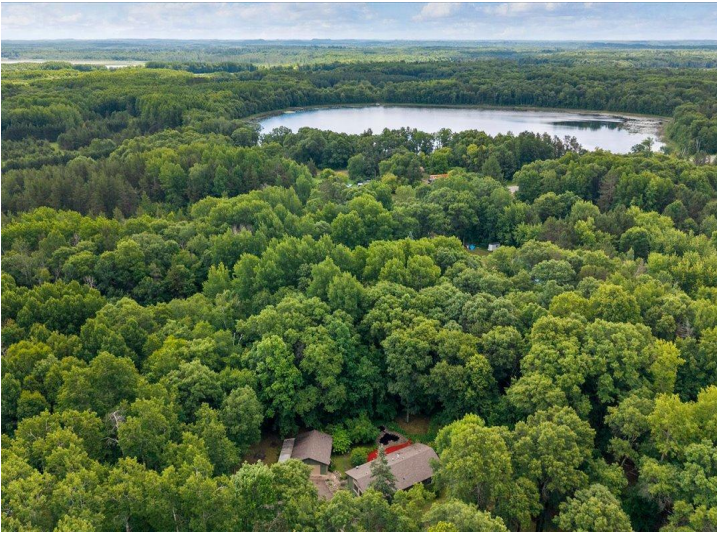
\$214,900
MLS 7105617 Residential
25528 Blue Bonnet Road
Merrifield MN 56465



website: www.AffinityRealEstate.com | email: info@affinityrealestate.com | office: 218-237-3333 | fax: 218-237-3377

Affinity
REAL ESTATE INC

\$214,900
MLS 7105617 Residential
25528 Blue Bonnet Road
Merrifield MN 56465



website: www.AffinityRealEstate.com | email: info@affinityrealestate.com | office: 218-237-3333 | fax:218-237-3377



\$214,900
MLS 7105617 Residential
25528 Blue Bonnet Road
Merrifield MN 56465