



MLS 7105987 Land

**\$119,000**

13.39 Acres  
Raw Land

TBD Boot Lake Road  
Bemidji MN 56601

Status: Active

**Description:**

(description unavailable)

**Additional Details:**

Lot Acres	13.39
Lot Dimensions	1287x442
School District	31
Taxes	\$400
Taxes with Assessments	\$400
Tax Year	2025

**Additional Features:**

**Driving Directions:**

From Downtown Bemidji go west on Division St to Stone Lake Rd SW and go south a mile to Boot Lake Rd and proceed west to property on the south side of the road.



Listed By:  
Whitetail Properties Real Esta

Affinity Real Estate Inc. participates in the Regional Multiple Listing Service of Minnesota, Inc Broker Reciprocity (sm) program, allowing us to display other broker's listings on our website. All properties are subject to prior sale, change or withdrawal.



Call Affinity Real Estate

**218-237-3333**

[info@affinityrealestate.com](mailto:info@affinityrealestate.com)



Affinity Real Estate - 600 Park Avenue South - Park Rapids MN 56470



website: [www.AffinityRealEstate.com](http://www.AffinityRealEstate.com) | email: [info@affinityrealestate.com](mailto:info@affinityrealestate.com) | office: 218-237-3333 | fax:218-237-3377



**\$119,000**  
MLS 7105987 Land  
TBD Boot Lake Road  
Bemidji MN 56601



website: [www.AffinityRealEstate.com](http://www.AffinityRealEstate.com) | email: [info@affinityrealestate.com](mailto:info@affinityrealestate.com) | office: 218-237-3333 | fax:218-237-3377



**\$119,000**  
MLS 7105987 Land  
TBD Boot Lake Road  
Bemidji MN 56601



website: [www.AffinityRealEstate.com](http://www.AffinityRealEstate.com) | email: [info@affinityrealestate.com](mailto:info@affinityrealestate.com) | office: 218-237-3333 | fax:218-237-3377

**Affinity**  
REAL ESTATE INC

**\$119,000**  
MLS 7105987 Land  
TBD Boot Lake Road  
Bemidji MN 56601



website: [www.AffinityRealEstate.com](http://www.AffinityRealEstate.com) | email: [info@affinityrealestate.com](mailto:info@affinityrealestate.com) | office: 218-237-3333 | fax:218-237-3377



**\$119,000**  
MLS 7105987 Land  
TBD Boot Lake Road  
Bemidji MN 56601



website: [www.AffinityRealEstate.com](http://www.AffinityRealEstate.com) | email: [info@affinityrealestate.com](mailto:info@affinityrealestate.com) | office: 218-237-3333 | fax:218-237-3377



**\$119,000**  
MLS 7105987 Land  
TBD Boot Lake Road  
Bemidji MN 56601



website: [www.AffinityRealEstate.com](http://www.AffinityRealEstate.com) | email: [info@affinityrealestate.com](mailto:info@affinityrealestate.com) | office: 218-237-3333 | fax:218-237-3377



**\$119,000**  
MLS 7105987 Land  
TBD Boot Lake Road  
Bemidji MN 56601



website: [www.AffinityRealEstate.com](http://www.AffinityRealEstate.com) | email: [info@affinityrealestate.com](mailto:info@affinityrealestate.com) | office: 218-237-3333 | fax:218-237-3377



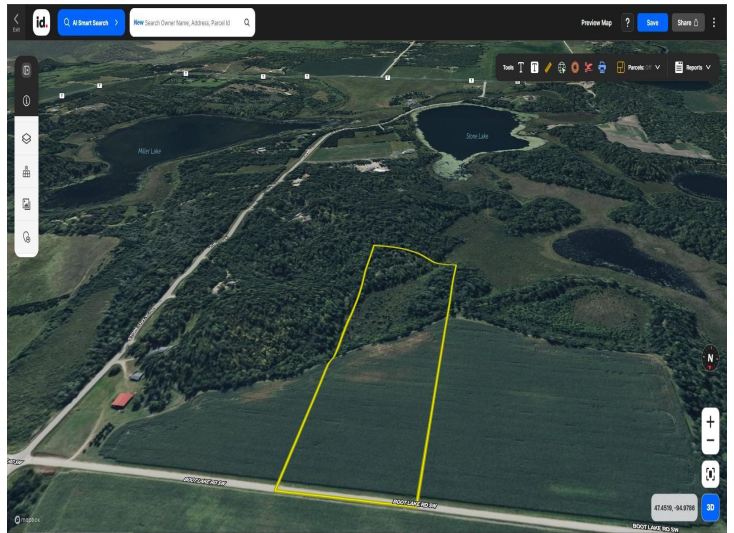
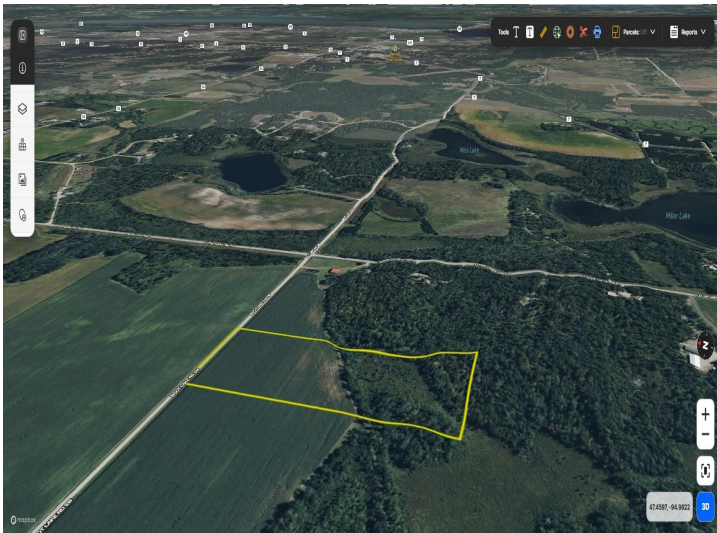
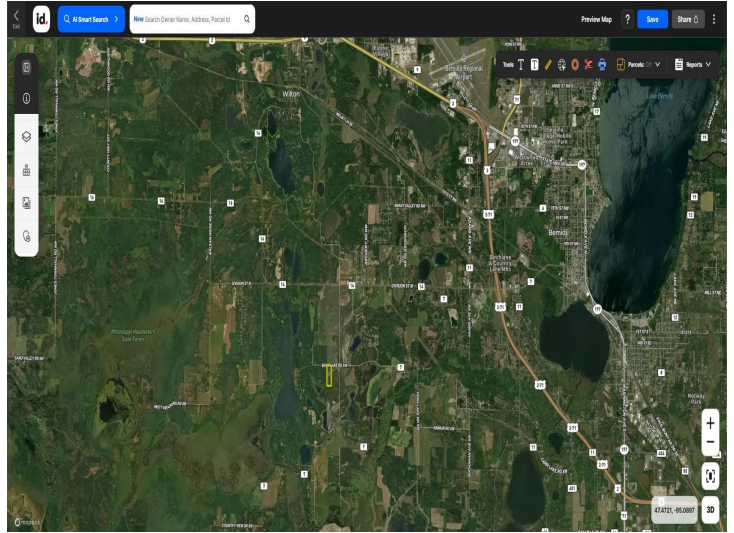
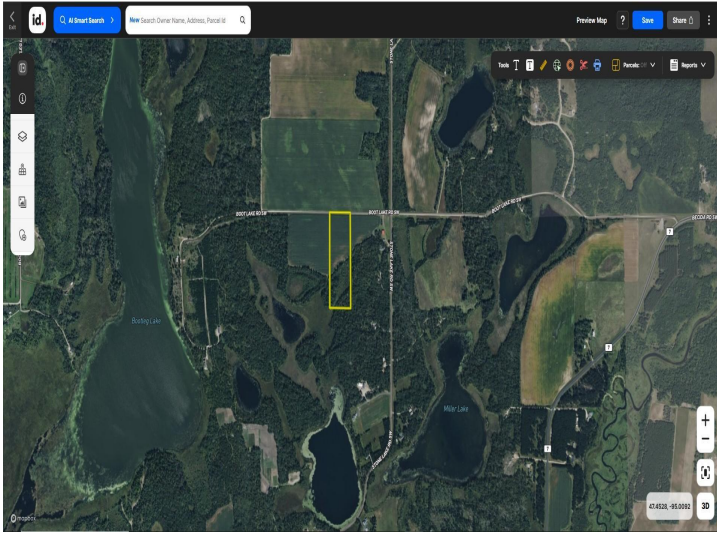
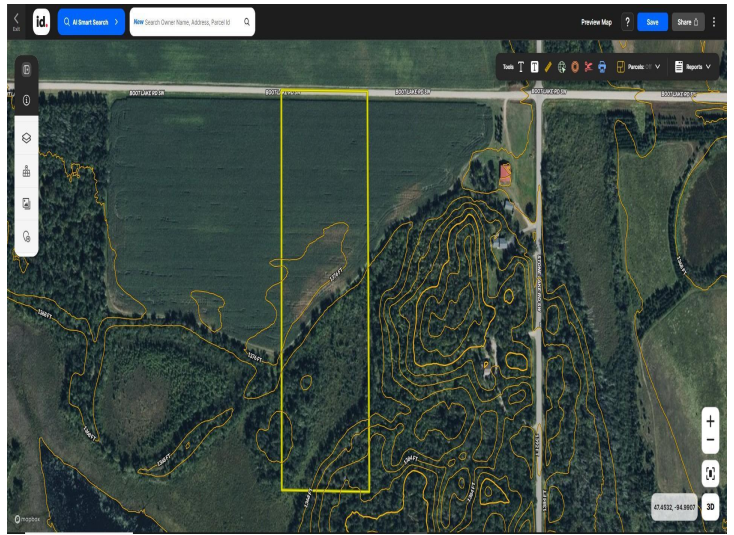
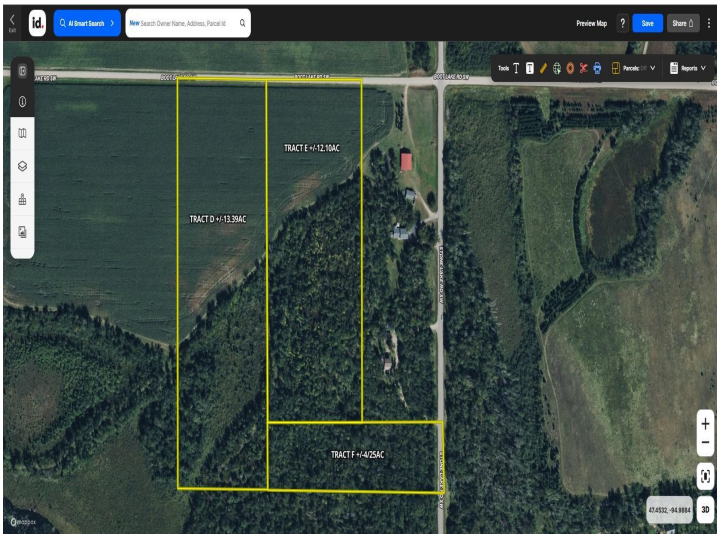
**\$119,000**  
MLS 7105987 Land  
TBD Boot Lake Road  
Bemidji MN 56601



website: [www.AffinityRealEstate.com](http://www.AffinityRealEstate.com) | email: [info@affinityrealestate.com](mailto:info@affinityrealestate.com) | office: 218-237-3333 | fax:218-237-3377



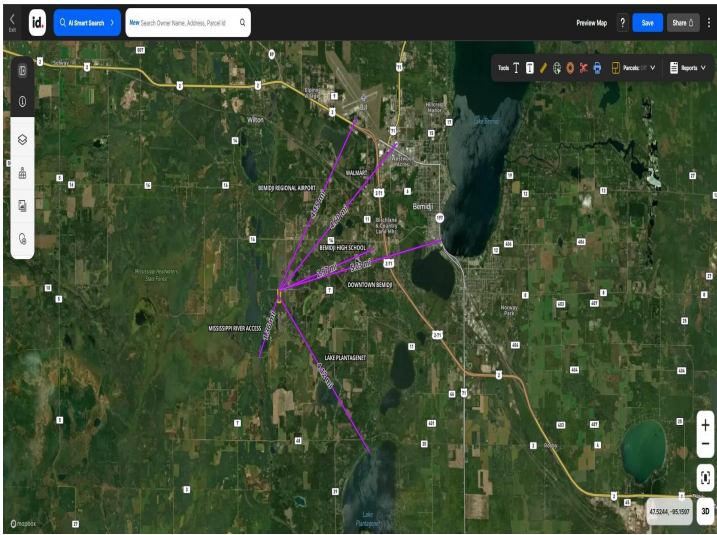
**\$119,000**  
MLS 7105987 Land  
TBD Boot Lake Road  
Bemidji MN 56601



website: [www.AffinityRealEstate.com](http://www.AffinityRealEstate.com) | email: [info@affinityrealestate.com](mailto:info@affinityrealestate.com) | office: 218-237-3333 | fax: 218-237-3377



**\$119,000**  
 MLS 7105987 Land  
 TBD Boot Lake Road  
 Bemidji MN 56601



website: [www.AffinityRealEstate.com](http://www.AffinityRealEstate.com) | email: [info@affinityrealestate.com](mailto:info@affinityrealestate.com) | office: 218-237-3333 | fax:218-237-3377



**\$119,000**  
MLS 7105987 Land  
TBD Boot Lake Road  
Bemidji MN 56601