



MLS 7106101 Residential

\$440,000

2,468 sq ft
4 bedrooms
3 baths

2485 Reeds Villa Lane
Alexandria MN 56308

Status: Coming Soon

Description:

Welcome home to this immaculate, well-maintained 4-bedroom, 3 bath residence that offers the perfect blend of privacy and convenience. Nestled on a spacious lot with mature trees, fruit trees (Nanking Cherry, apple, plum) and perennial flowers, this property provides a peaceful, secluded setting while remaining just minutes from town. Inside, you will find a bright and inviting layout featuring a large family room with a cozy electric fireplace-perfect for relaxing or entertaining. The walkout basement is a total bonus and provides easy access to the beautiful yard. The oversized garage is heated and insulated, making it ideal for year-round use, storage or a workshop area. Every aspect of this home reflects pride of ownership, with exceptional care and attention evident throughout. Don't miss the opportunity to own this move-in ready home offering comfort, space, and a beautiful natural setting.

Additional Details:


Year Built	2004
Lot Acres	0.62
Lot Dimensions	180x150x180x150
Garage Stalls	2
School District	206
Taxes	\$3,041
Taxes with Assessments	\$3,180
Tax Year	2026

Additional Features:

Fuel: Natural Gas **Heat:** Forced Air, In-Floor Heating

Driving Directions:

From Alex, take Highway 27W to CR 45. Take right. Turn left on Latoka Lane SE, turn left on to Reeds Villa Rd, turn rt on Reeds Villa Court, take left on Reeds Villa Lane to house on left.

 Listed By:
Counselor Realty Inc of Alex

Affinity Real Estate Inc. participates in the Regional Multiple Listing Service of Minnesota, Inc Broker Reciprocity (sm) program, allowing us to display other broker's listings on our website. All properties are subject to prior sale, change or withdrawal.



Call Affinity Real Estate

218-237-3333

info@affinityrealestate.com



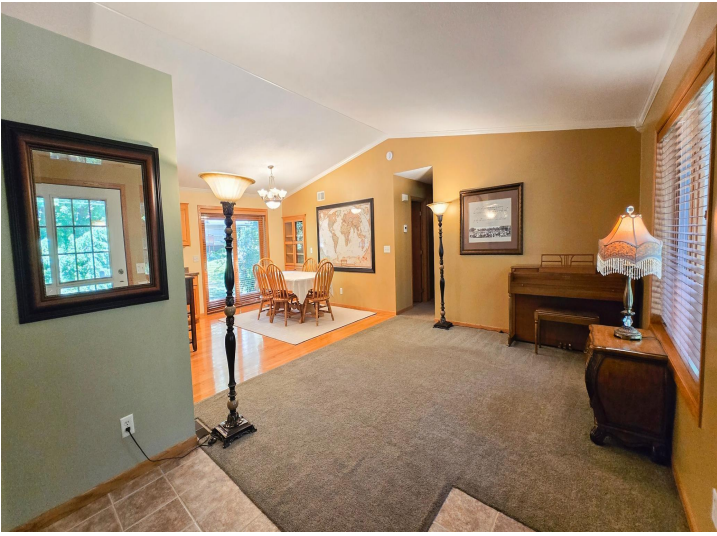
Affinity Real Estate - 600 Park Avenue South - Park Rapids MN 56470



website: www.AffinityRealEstate.com | email: info@affinityrealestate.com | office: 218-237-3333 | fax: 218-237-3377

Affinity
REAL ESTATE INC

\$440,000
MLS 7106101 Residential
2485 Reeds Villa Lane
Alexandria MN 56308



website: www.AffinityRealEstate.com | email: info@affinityrealestate.com | office: 218-237-3333 | fax:218-237-3377

Affinity
REAL ESTATE INC

\$440,000
MLS 7106101 Residential
2485 Reeds Villa Lane
Alexandria MN 56308



website: www.AffinityRealEstate.com | email: info@affinityrealestate.com | office: 218-237-3333 | fax:218-237-3377

Affinity
REAL ESTATE INC

\$440,000
MLS 7106101 Residential
2485 Reeds Villa Lane
Alexandria MN 56308



website: www.AffinityRealEstate.com | email: info@affinityrealestate.com | office: 218-237-3333 | fax:218-237-3377

Affinity
REAL ESTATE INC

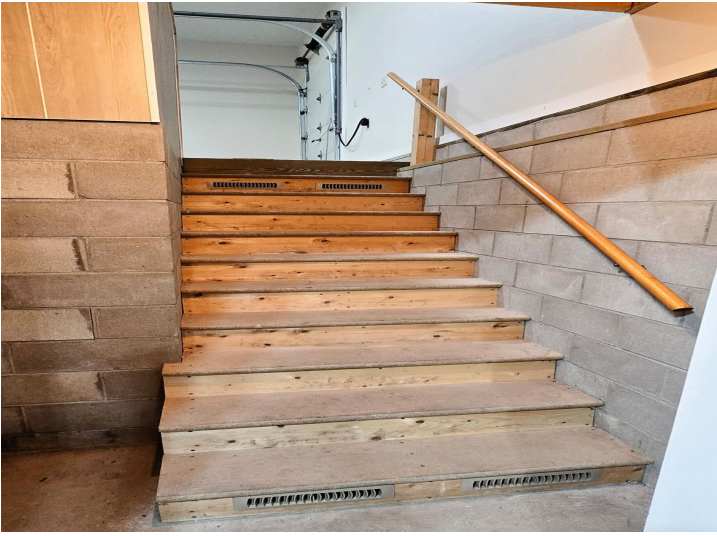
\$440,000
MLS 7106101 Residential
2485 Reeds Villa Lane
Alexandria MN 56308



website: www.AffinityRealEstate.com | email: info@affinityrealestate.com | office: 218-237-3333 | fax:218-237-3377

Affinity
REAL ESTATE INC

\$440,000
MLS 7106101 Residential
2485 Reeds Villa Lane
Alexandria MN 56308



website: www.AffinityRealEstate.com | email: info@affinityrealestate.com | office: 218-237-3333 | fax:218-237-3377



\$440,000
MLS 7106101 Residential
2485 Reeds Villa Lane
Alexandria MN 56308



website: www.AffinityRealEstate.com | email: info@affinityrealestate.com | office: 218-237-3333 | fax:218-237-3377



\$440,000
MLS 7106101 Residential
2485 Reeds Villa Lane
Alexandria MN 56308