



MLS 7106540 Land

\$174,900

20.08 Acres
Raw Land

TBD-20AC Sleepy Hollow Road
Brainerd MN 56401

Status: Active

Description:

Come check out this awesome 20 acre tract located only 8 miles South of Brainerd! This property is the ideal setting to build your dream country home in seclusion. The pine and spruce trees on this property offer a beautiful natural barrier for a future home build. This ground also has open areas throughout to potentially do food plots! This is a wonderful opportunity to pick up a slice of ground that is very close in proximity to all of the lakes Brainerd has to offer as well. This 20 acres consists of two 10 acre parcels that both give the ability to build! This is a great opportunity!! Schedule your tour today.

Additional Details:

Lot Acres	20.08
Lot Dimensions	See survey
School District	181
Taxes	(unreported)
Taxes with Assessments	(unreported)
Tax Year	2026

Additional Features:

Driving Directions:

South of County Rd 45 out of Brainerd approximately 8.5 miles. West on Sleepy Hollow Rd. Property will be on your left hand side.



Listed By:
Weiss Realty LLC

Affinity Real Estate Inc. participates in the Regional Multiple Listing Service of Minnesota, Inc Broker Reciprocity (sm) program, allowing us to display other broker's listings on our website. All properties are subject to prior sale, change or withdrawal.



Call Affinity Real Estate

218-237-3333

info@affinityrealestate.com



Affinity Real Estate - 600 Park Avenue South - Park Rapids MN 56470



website: www.AffinityRealEstate.com | email: info@affinityrealestate.com | office: 218-237-3333 | fax:218-237-3377



\$174,900
MLS 7106540 Land
TBD-20AC Sleepy Hollow
Road
Brainerd MN 56401



website: www.AffinityRealEstate.com | email: info@affinityrealestate.com | office: 218-237-3333 | fax:218-237-3377



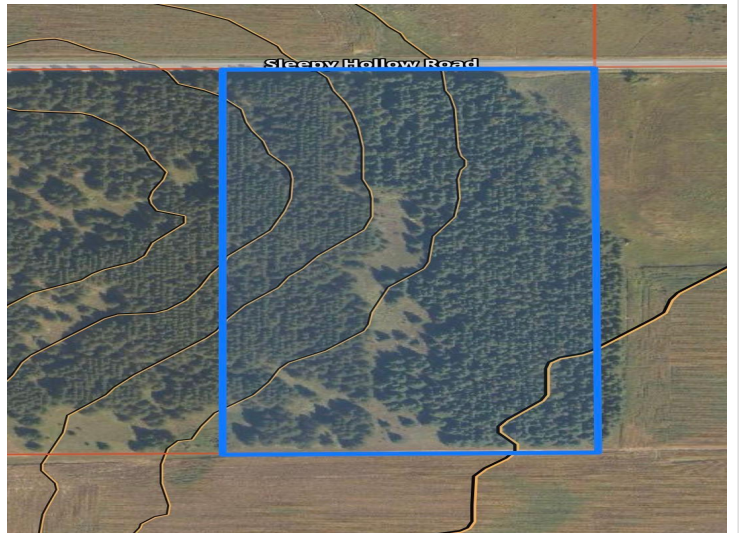
\$174,900
MLS 7106540 Land
TBD-20AC Sleepy Hollow
Road
Brainerd MN 56401



website: www.AffinityRealEstate.com | email: info@affinityrealestate.com | office: 218-237-3333 | fax:218-237-3377



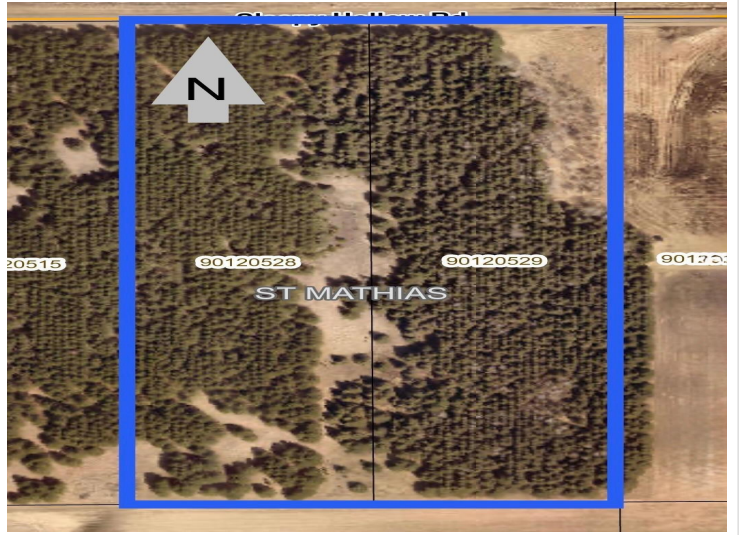
\$174,900
MLS 7106540 Land
TBD-20AC Sleepy Hollow
Road
Brainerd MN 56401



website: www.AffinityRealEstate.com | email: info@affinityrealestate.com | office: 218-237-3333 | fax:218-237-3377



\$174,900
MLS 7106540 Land
TBD-20AC Sleepy Hollow
Road
Brainerd MN 56401



website: www.AffinityRealEstate.com | email: info@affinityrealestate.com | office: 218-237-3333 | fax:218-237-3377



\$174,900
MLS 7106540 Land
TBD-20AC Sleepy Hollow
Road
Brainerd MN 56401