



MLS 7106611 Residential

\$499,900

2,512 sq ft
4 bedrooms
3 baths

1320 Whiting Road
Bemidji MN 56601

Status: Active

Description:

Experience Prairiewood living in this split-level home, complete with a triple attached garage and paved driveway. Ideally situated just minutes from Bemidji and nearby amenities, this sought-after CIC community offers residents shared ownership of 70 acres of scenic wooded and open grounds, featuring mowed walking trails, groomed cross-country ski trails, and a playground. Inside, the home offers a spacious primary ensuite, an open-concept kitchen, dining, and living area, a deck, and a walk-out lower level with patio access. Additional highlights include full bathrooms on both levels, a welcoming family room with a cozy fireplace, generous crawl space storage, and three additional bedrooms. Schedule your private tour and discover the comfort, setting, and lifestyle this exceptional home has to offer.

Additional Details:

Year Built	2025
Lot Acres	0.47
Lot Dimensions	123x170x128x174
Garage Stalls	3
School District	31
Taxes	\$822
Taxes with Assessments	\$822
Tax Year	2026

Additional Features:

Basement: Finished, Walkout **Fuel:** Natural Gas **Garage:** 3 **Heat:** Forced Air **Sewer:** Private Sewer, Septic System Compliant - Yes
Water: Drilled, Private, Well **Air Conditioning:** Central Air

Driving Directions:

From Walgreens, north on Irvine Ave, turn left on Whiting Rd, turn left at 1320, and follow to home on the left.



Listed By:
Realty Experts, LLC

Affinity Real Estate Inc. participates in the Regional Multiple Listing Service of Minnesota, Inc Broker Reciprocity (sm) program, allowing us to display other broker's listings on our website. All properties are subject to prior sale, change or withdrawal.



Call Affinity Real Estate

218-237-3333

info@affinityrealestate.com



Affinity Real Estate - 600 Park Avenue South - Park Rapids MN 56470



website: www.AffinityRealEstate.com | email: info@affinityrealestate.com | office: 218-237-3333 | fax: 218-237-3377

Affinity
REAL ESTATE INC

\$499,900
MLS 7106611 Residential
1320 Whiting Road
Bemidji MN 56601



website: www.AffinityRealEstate.com | email: info@affinityrealestate.com | office: 218-237-3333 | fax:218-237-3377



\$499,900
MLS 7106611 Residential
1320 Whiting Road
Bemidji MN 56601



website: www.AffinityRealEstate.com | email: info@affinityrealestate.com | office: 218-237-3333 | fax:218-237-3377

Affinity
REAL ESTATE INC

\$499,900
MLS 7106611 Residential
1320 Whiting Road
Bemidji MN 56601



website: www.AffinityRealEstate.com | email: info@affinityrealestate.com | office: 218-237-3333 | fax:218-237-3377

Affinity
REAL ESTATE INC

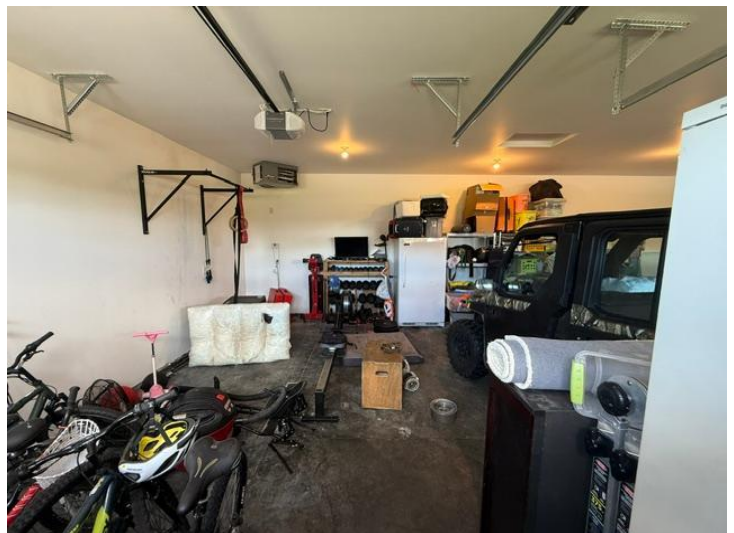
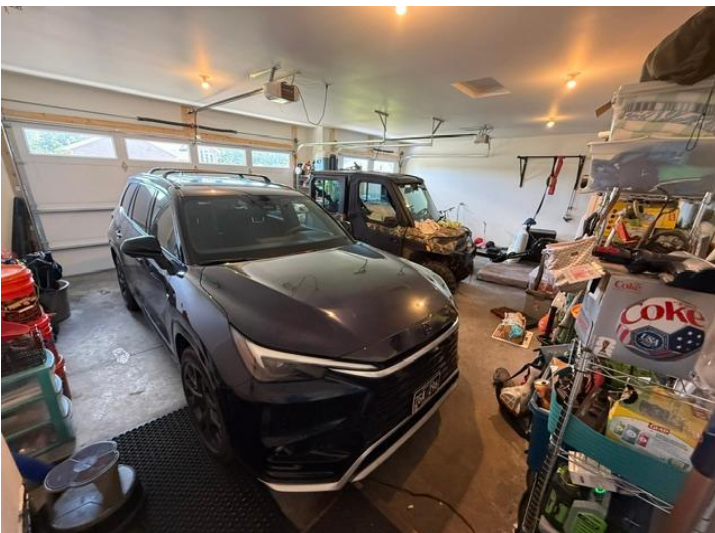
\$499,900
MLS 7106611 Residential
1320 Whiting Road
Bemidji MN 56601



website: www.AffinityRealEstate.com | email: info@affinityrealestate.com | office: 218-237-3333 | fax:218-237-3377

Affinity
REAL ESTATE INC

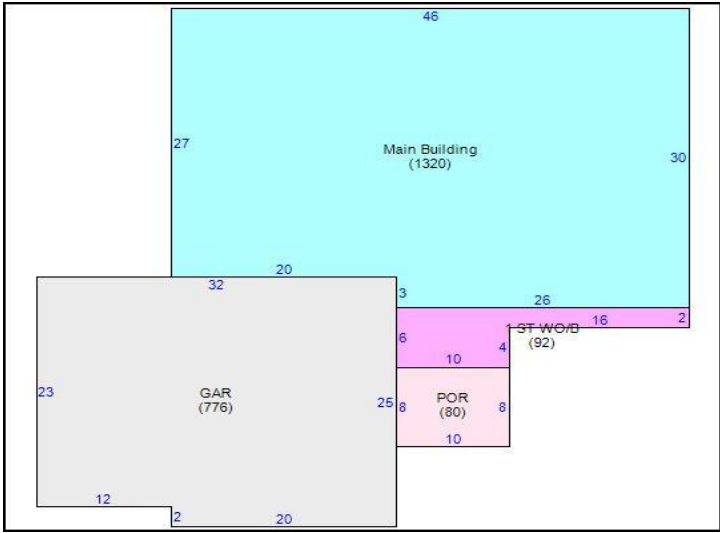
\$499,900
MLS 7106611 Residential
1320 Whiting Road
Bemidji MN 56601



website: www.AffinityRealEstate.com | email: info@affinityrealestate.com | office: 218-237-3333 | fax:218-237-3377

Affinity
REAL ESTATE INC

\$499,900
MLS 7106611 Residential
1320 Whiting Road
Bemidji MN 56601



website: www.AffinityRealEstate.com | email: info@affinityrealestate.com | office: 218-237-3333 | fax:218-237-3377



\$499,900
 MLS 7106611 Residential
 1320 Whiting Road
 Bemidji MN 56601