



MLS 7107353 Land

\$220,000

120.72 Acres
Raw Land

TBD Moose Lake Road
Pennington MN 56663

Status: Active

Description:

You must see this 120+ acre plot! It is conveniently located between Blackduck, Cass Lake, and Bemidji and is surrounded by state and federal land-2 miles to the west, 1 mile to the north, 2+miles to the east, and 3/4+ miles to the south. This property features supreme privacy, gated access, road vehicle accessible, multiple well-maintained trails, a deer stand to bag that big buck, areas to set up base camp or build your dream off-grid cabin, a storage shed, and even an outhouse! The 2005 27' Palomino Toy Hauler/Camper is negotiable.

Additional Details:

Lot Acres	120.72
Lot Dimensions	irregular
School District	32
Taxes	\$1,276
Taxes with Assessments	\$1,276
Tax Year	2026

Additional Features:

Driving Directions:

From Blackduck, follow Scenic Hwy to a left on Birch Bark Rd, then a right on N Moose Lake Rd, then a right at the Matt Sparby real estate sign (across from the south entrance of Eagle View Rd).



Listed By:
Realty Experts, LLC

Affinity Real Estate Inc. participates in the Regional Multiple Listing Service of Minnesota, Inc Broker Reciprocity (sm) program, allowing us to display other broker's listings on our website. All properties are subject to prior sale, change or withdrawal.



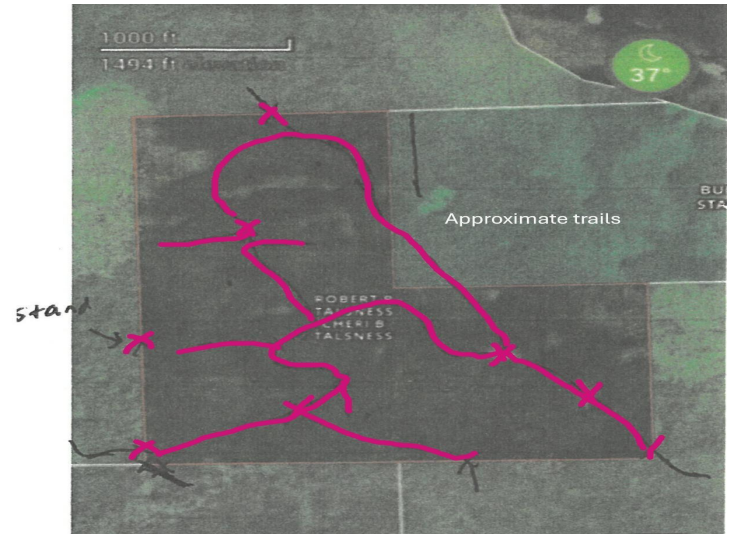
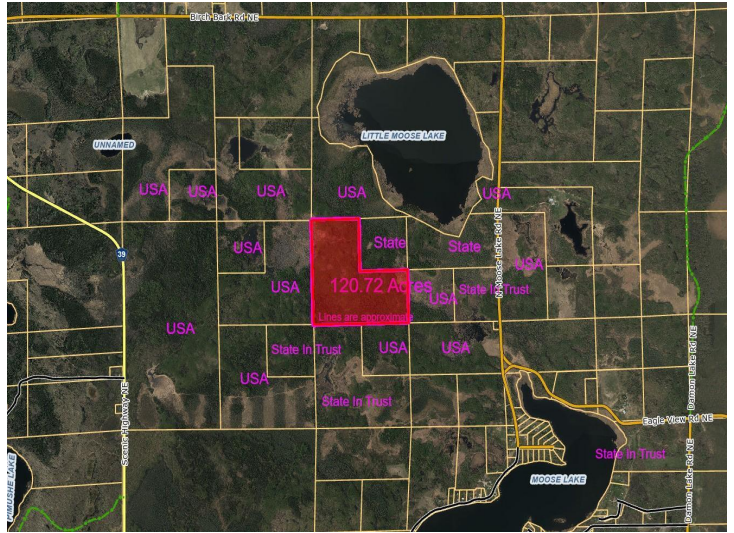
Call Affinity Real Estate

218-237-3333

info@affinityrealestate.com



Affinity Real Estate - 600 Park Avenue South - Park Rapids MN 56470



website: www.AffinityRealEstate.com | email: info@affinityrealestate.com | office: 218-237-3333 | fax: 218-237-3377



\$220,000
 MLS 7107353 Land
 TBD Moose Lake Road
 Pennington MN 56663



website: www.AffinityRealEstate.com | email: info@affinityrealestate.com | office: 218-237-3333 | fax:218-237-3377



\$220,000
MLS 7107353 Land
TBD Moose Lake Road
Pennington MN 56663



website: www.AffinityRealEstate.com | email: info@affinityrealestate.com | office: 218-237-3333 | fax:218-237-3377



\$220,000
MLS 7107353 Land
TBD Moose Lake Road
Pennington MN 56663



website: www.AffinityRealEstate.com | email: info@affinityrealestate.com | office: 218-237-3333 | fax:218-237-3377



\$220,000
MLS 7107353 Land
TBD Moose Lake Road
Pennington MN 56663



website: www.AffinityRealEstate.com | email: info@affinityrealestate.com | office: 218-237-3333 | fax:218-237-3377



\$220,000
MLS 7107353 Land
TBD Moose Lake Road
Pennington MN 56663