



MLS 7107514 Residential

\$189,900

1,688 sq ft
4 bedrooms
2 baths

34056 State Hwy 6
Deer River MN 56636

Status: Active

Description:

Escape to the peace and privacy of country living with this charming 4-bedroom, 2-bathroom home situated on 11 scenic acres just a couple of miles from town. Ideally located near the local golf course and several area lakes, this property offers the perfect balance of rural tranquility and convenient access to recreation and amenities. Inside, you'll find spacious living areas and a relaxing sauna—perfect for unwinding after a day outdoors. Outside, there's plenty of room for vehicles, equipment, hobbies, and storage with a 24x30 detached garage and an impressive 24x40 metal storage building. Whether you're looking for a hobby farm, a recreational retreat, or simply more space to enjoy country living, this property offers endless possibilities in an exceptional location.

Additional Details:

Year Built	1955
Lot Acres	11.4
Lot Dimensions	375x1260
Garage Stalls	4
School District	317
Taxes	\$1,230
Taxes with Assessments	\$1,230
Tax Year	2026

Additional Features:

Basement: Block **Fuel:** Propane **Garage:** 4 **Heat:** Baseboard, Boiler **Sewer:** Private Sewer **Water:** 4-Inch Submersible **Air Conditioning:** None

Driving Directions:

From Grand Rapids, Hwy 2 W to Deer River to R on Hwy 6 to address on R



Listed By:
CENTURY 21 LAND OF LAKES

Affinity Real Estate Inc. participates in the Regional Multiple Listing Service of Minnesota, Inc Broker Reciprocity (sm) program, allowing us to display other broker's listings on our website. All properties are subject to prior sale, change or withdrawal.



Call Affinity Real Estate

218-237-3333

info@affinityrealestate.com



Affinity Real Estate - 600 Park Avenue South - Park Rapids MN 56470



website: www.AffinityRealEstate.com | email: info@affinityrealestate.com | office: 218-237-3333 | fax:218-237-3377



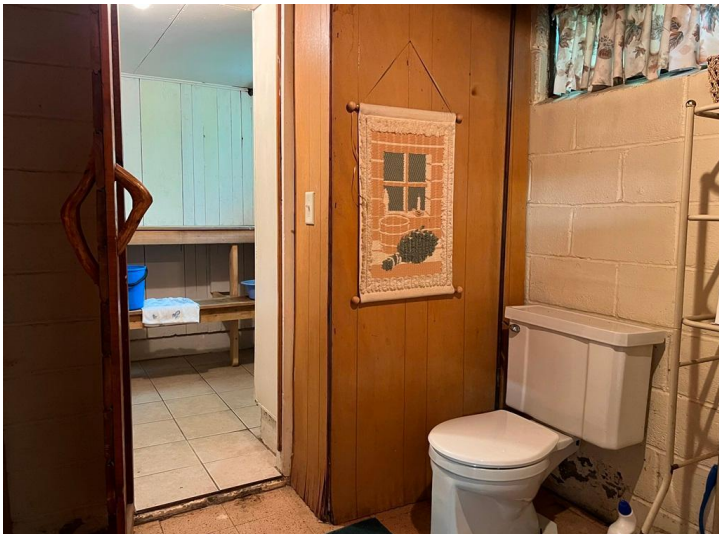
\$189,900
MLS 7107514 Residential
34056 State Hwy 6
Deer River MN 56636



website: www.AffinityRealEstate.com | email: info@affinityrealestate.com | office: 218-237-3333 | fax:218-237-3377

Affinity
REAL ESTATE INC

\$189,900
MLS 7107514 Residential
34056 State Hwy 6
Deer River MN 56636



website: www.AffinityRealEstate.com | email: info@affinityrealestate.com | office: 218-237-3333 | fax:218-237-3377

Affinity
REAL ESTATE INC

\$189,900
MLS 7107514 Residential
34056 State Hwy 6
Deer River MN 56636



website: www.AffinityRealEstate.com | email: info@affinityrealestate.com | office: 218-237-3333 | fax:218-237-3377

Affinity
REAL ESTATE INC

\$189,900
MLS 7107514 Residential
34056 State Hwy 6
Deer River MN 56636



website: www.AffinityRealEstate.com | email: info@affinityrealestate.com | office: 218-237-3333 | fax:218-237-3377



\$189,900
MLS 7107514 Residential
34056 State Hwy 6
Deer River MN 56636