



MLS 7107685 Land

\$125,000

16.7 Acres
Raw Land

TBD US 71 - 16.7 AC
Park Rapids MN 56470

Status: Active

Description:

Looking for acreage close to Park Rapids? This 16.7 acre parcel is located just 5 miles north of town and offers a private setting with a cleared building site already in place. The approach is installed, the building area is ready for your plans, and the remaining acreage is heavily wooded, providing plenty of privacy and room to explore. The property is all high ground with rolling terrain, making it an excellent location for your dream home or cabin. Enjoy the peace and quiet of the Northwoods while being surrounded by countless lakes, trails, and year-round recreation, all within a short drive.

Additional Details:

| | |
|------------------------|-----------|
| Year Built | 1948 |
| Lot Acres | 16.7 |
| Lot Dimensions | Irregular |
| School District | 309 |
| Taxes | \$400 |
| Taxes with Assessments | \$400 |
| Tax Year | 2025 |

Additional Features:

Driving Directions:

From 34/71 intersection head north for 5 miles and property is on the left.



Listed By:
Keller Williams Realty Professionals

Affinity Real Estate Inc. participates in the Regional Multiple Listing Service of Minnesota, Inc Broker Reciprocity (sm) program, allowing us to display other broker's listings on our website. All properties are subject to prior sale, change or withdrawal.



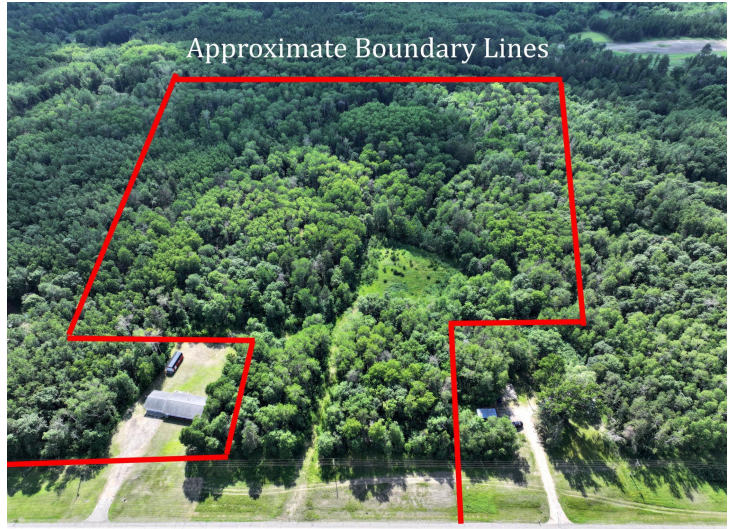
Call Affinity Real Estate

218-237-3333

info@affinityrealestate.com



Affinity Real Estate - 600 Park Avenue South - Park Rapids MN 56470



website: www.AffinityRealEstate.com | email: info@affinityrealestate.com | office: 218-237-3333 | fax: 218-237-3377



\$125,000
MLS 7107685 Land
TBD US 71 - 16.7 AC
Park Rapids MN 56470

