



MLS 7107699 Lake Home

\$499,900

1,197 sq ft
2 bedrooms
2 baths

25149 Chokecherry Lane
Nevis MN 56467

Waterfront: Island Lake (29008800)

Status: Coming Soon

Description:

Discover your perfect year-round retreat on beautiful Island Lake! This charming lake home features 2 bedrooms, 2 baths, and a spacious 4-season porch offering breathtaking lake views in every season. Enjoy the comfort of a detached 2-car garage and the privacy of over 2.5 acres surrounded by mature pines.

Relax and play on the sandy lake shore, and take advantage of the level recreation area along the shoreline for easy access to the lake. Making this ideal for entertaining friends and family all summer long. Experience tranquil living and endless possibilities in this exceptional waterfront property.

Schedule your showing today and make Island Lake your new home!

Additional Details:

Year Built	1974
Lot Acres	2.76
Lot Dimensions	95x468xirr
Garage Stalls	2
School District	308
Taxes	\$1,653
Taxes with Assessments	\$1,898
Tax Year	2026

Additional Features:

Fuel: Propane, Wood **Heat:** Forced Air, Wood Stove

Driving Directions:

From 34/71 in Park Rapids, East on 34 to a right (South) on County 13 to a left on 174th St., then right on Chokecherry Dr. At the Y, stay to the left, then turn right onto Chokecherry Lane. Property on right.



Listed By:
Wolff & Simon Real Estate

Affinity Real Estate Inc. participates in the Regional Multiple Listing Service of Minnesota, Inc Broker Reciprocity (sm) program, allowing us to display other broker's listings on our website. All properties are subject to prior sale, change or withdrawal.



Call Affinity Real Estate

218-237-3333

info@affinityrealestate.com



Affinity Real Estate - 600 Park Avenue South - Park Rapids MN 56470



website: www.AffinityRealEstate.com | email: info@affinityrealestate.com | office: 218-237-3333 | fax: 218-237-3377



\$499,900
MLS 7107699 Lake Home
25149 Chokecherry Lane
Nevis MN 56467



website: www.AffinityRealEstate.com | email: info@affinityrealestate.com | office: 218-237-3333 | fax: 218-237-3377

Affinity
REAL ESTATE INC

\$499,900
MLS 7107699 Lake Home
25149 Chokecherry Lane
Nevis MN 56467



website: www.AffinityRealEstate.com | email: info@affinityrealestate.com | office: 218-237-3333 | fax:218-237-3377

Affinity
REAL ESTATE INC

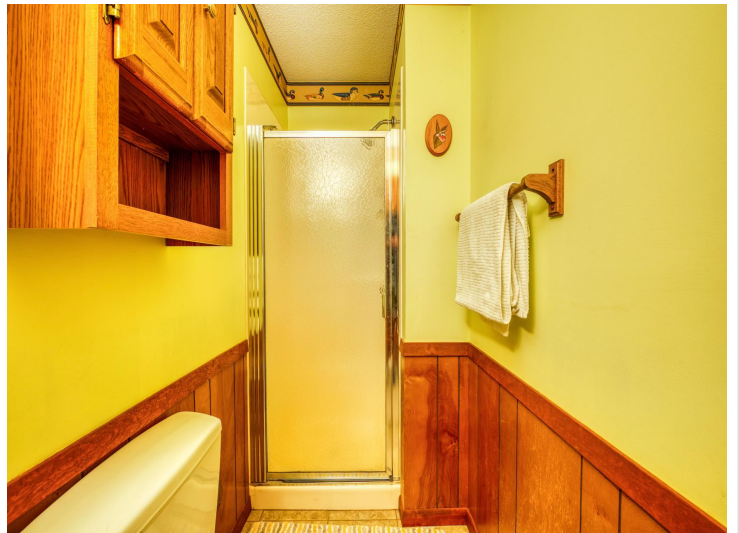
\$499,900
MLS 7107699 Lake Home
25149 Chokecherry Lane
Nevis MN 56467



website: www.AffinityRealEstate.com | email: info@affinityrealestate.com | office: 218-237-3333 | fax:218-237-3377



\$499,900
MLS 7107699 Lake Home
25149 Chokecherry Lane
Nevis MN 56467



website: www.AffinityRealEstate.com | email: info@affinityrealestate.com | office: 218-237-3333 | fax: 218-237-3377

Affinity
REAL ESTATE INC

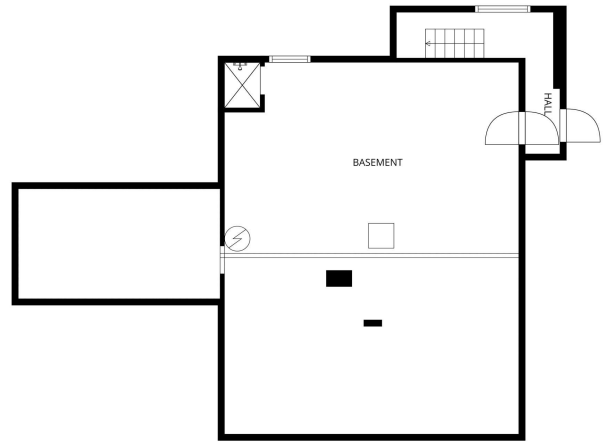
\$499,900
MLS 7107699 Lake Home
25149 Chokecherry Lane
Nevis MN 56467



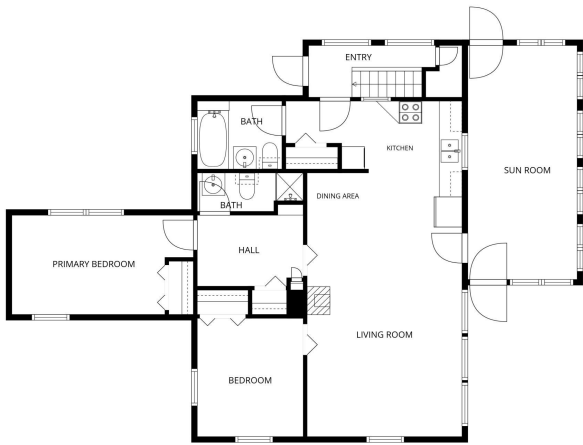
website: www.AffinityRealEstate.com | email: info@affinityrealestate.com | office: 218-237-3333 | fax:218-237-3377

Affinity
REAL ESTATE INC

\$499,900
MLS 7107699 Lake Home
25149 Chokecherry Lane
Nevis MN 56467



FLOOR PLAN CREATED BY CUBICASA APP. MEASUREMENTS DEEMED HIGHLY RELIABLE BUT NOT GUARANTEED.



FLOOR PLAN CREATED BY CUBICASA APP. MEASUREMENTS DEEMED HIGHLY RELIABLE BUT NOT GUARANTEED.



TOTAL: 1151 sq. ft.
 1ST FLOOR: 70 sq. ft. 2ND FLOOR: 1081 sq. ft.
 EXCLUDED AREAS: LOW CEILING: 466 sq. ft. BASEMENT: 346 sq. ft. WALLS: 164 sq. ft.



website: www.AffinityRealEstate.com | email: info@affinityrealestate.com | office: 218-237-3333 | fax: 218-237-3377



\$499,900
 MLS 7107699 Lake Home
 25149 Chokecherry Lane
 Nevis MN 56467



website: www.AffinityRealEstate.com | email: info@affinityrealestate.com | office: 218-237-3333 | fax:218-237-3377



\$499,900
MLS 7107699 Lake Home
25149 Chokecherry Lane
Nevis MN 56467



website: www.AffinityRealEstate.com | email: info@affinityrealestate.com | office: 218-237-3333 | fax:218-237-3377



\$499,900
MLS 7107699 Lake Home
25149 Chokecherry Lane
Nevis MN 56467