



MLS 7107903 Residential

\$259,900

2,418 sq ft
4 bedrooms
2 baths

215 Madison Avenue
Wadena MN 56482

Status: Active

Description:

Completely remodeled and move in ready, this beautifully updated home combines modern finishes with a thoughtful, family friendly layout in one of the area's most desirable neighborhoods. From the moment you step inside, you'll appreciate the extensive renovations throughout, including a stunning new kitchen with quartz countertops, brand new appliances, beautifully remodeled custom tile bathrooms, new flooring, fresh paint, and updated base trim that create a clean, contemporary feel.


Designed with both everyday living and entertaining in mind, the home features a newly created family room that can be separated by a stylish sliding barn door, offering the perfect space for kids to gather while adults enjoy the main living area. Step outside onto the brand new deck, an ideal spot for grilling, relaxing, or hosting friends and family. Chain link fence surrounds the property for the family dog. Additional comforts include central air conditioning to keep you cool all summer long.

Location is everything, and this home delivers. Situated just one block from Tapley Park, you'll enjoy easy access to green space, playgrounds, and outdoor recreation, all while living in one of the community's most sought after locations.

With extensive renovations already completed, all that's left to do is move in and start enjoying everything this exceptional home has to offer. Owner is agent.

Additional Details:

Year Built	1959
Lot Acres	0.211
Lot Dimensions	60 x 140
Garage Stalls	1
School District	2155
Taxes	\$2,296
Taxes with Assessments	\$2,296
Tax Year	2026

Listed By:  **Broker Reciprocity**

Central Air
 Affinity Real Estate Inc. participates in the Regional Multiple Listing Service of Minnesota, Inc Broker Reciprocity (sm) program, allowing us to display other broker's listings on our website. All properties are subject to prior sale, change or withdrawal.
 From HWY 10/HWY 71 Intersection, head south on Highway 71 (Jefferson Ave). Turn right on Madison Ave SW. House will be on left hand side.



Call Affinity Real Estate

218-237-8338

info@affinityrealestate.com



Affinity Real Estate - 600 Park Avenue South - Park Rapids MN 56470



website: www.AffinityRealEstate.com | email: info@affinityrealestate.com | office: 218-237-3333 | fax:218-237-3377

Affinity
REAL ESTATE INC

\$259,900
MLS 7107903 Residential
215 Madison Avenue
Wadena MN 56482



website: www.AffinityRealEstate.com | email: info@affinityrealestate.com | office: 218-237-3333 | fax: 218-237-3377

Affinity
REAL ESTATE INC

\$259,900
MLS 7107903 Residential
215 Madison Avenue
Wadena MN 56482



website: www.AffinityRealEstate.com | email: info@affinityrealestate.com | office: 218-237-3333 | fax:218-237-3377



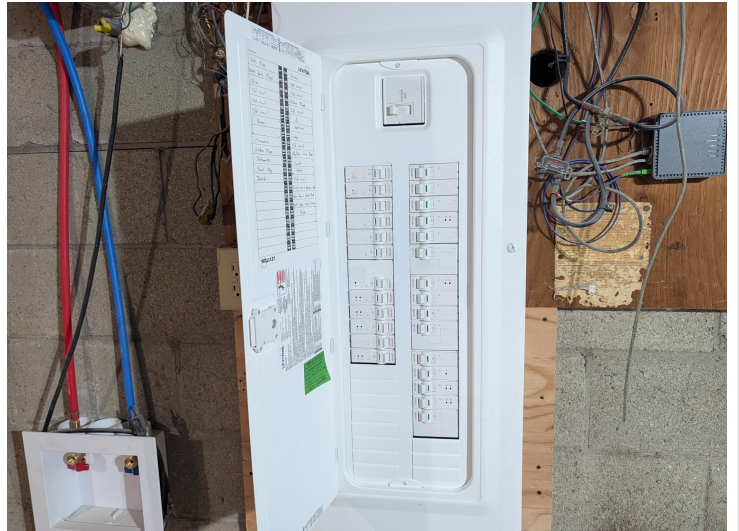
\$259,900
MLS 7107903 Residential
215 Madison Avenue
Wadena MN 56482



website: www.AffinityRealEstate.com | email: info@affinityrealestate.com | office: 218-237-3333 | fax:218-237-3377



\$259,900
MLS 7107903 Residential
215 Madison Avenue
Wadena MN 56482



website: www.AffinityRealEstate.com | email: info@affinityrealestate.com | office: 218-237-3333 | fax:218-237-3377



\$259,900
MLS 7107903 Residential
215 Madison Avenue
Wadena MN 56482



website: www.AffinityRealEstate.com | email: info@affinityrealestate.com | office: 218-237-3333 | fax:218-237-3377

Affinity
REAL ESTATE INC

\$259,900
MLS 7107903 Residential
215 Madison Avenue
Wadena MN 56482