

MLS 7367904 Lake Land

**\$94,000**

#### Description:

Beautiful half acre lot on Straight Lake with 85 feet of frontage right in the middle of Smoky Hills State Forest. Close to both Park Rapids and Detroit Lakes. This lot is the perfect spot for a seasonal or year round cabin to enjoy summers at the lake as well as near snowmobile trails and skiing in winter. Straight Lake offers excellent fishing, including bass, bluegill, sunnies, and walleye.

#### Additional Details:

Lot Acres	0.51
Lot Dimensions	283 x 85 x 368 x 75
School District	309
Taxes	\$614
Taxes with Assessments	\$638
Tax Year	2023

#### Additional Features:

#### Driving Directions:

From Highway 34, turn North onto County 26. Take W Straight Lake Ave to Eagle Bay Ave. Turn North onto Green Acres Ave. Property is not marked with 911 Address sign.



Listed By:  
Archer Real Estate Services

Affinity Real Estate Inc. participates in the Regional Multiple Listing Service of Minnesota, Inc Broker Reciprocity (sm) program, allowing us to display other broker's listings on our website. All properties are subject to prior sale, change or withdrawal.



Call Affinity Real Estate

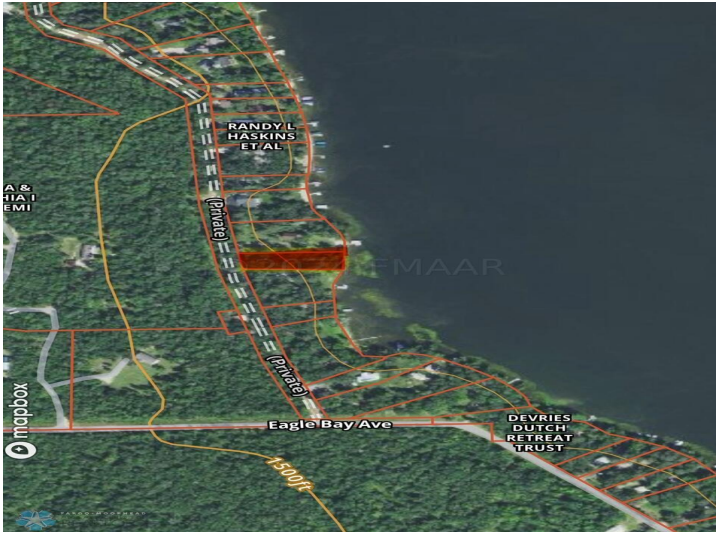
**218-237-3333**

[info@affinityrealestate.com](mailto:info@affinityrealestate.com)



Affinity Real Estate - 600 Park Avenue South - Park Rapids MN 56470





website: [www.AffinityRealEstate.com](http://www.AffinityRealEstate.com) | email: [info@affinityrealestate.com](mailto:info@affinityrealestate.com) | office: 218-237-3333 | fax: 218-237-3377



**\$94,000**  
 MLS 7367904 Lake Land  
 26139 GREEN ACRES  
 Avenue  
 Osage MN 56570





website: [www.AffinityRealEstate.com](http://www.AffinityRealEstate.com) | email: [info@affinityrealestate.com](mailto:info@affinityrealestate.com) | office: 218-237-3333 | fax:218-237-3377



**\$94,000**

MLS 7367904 Lake Land  
26139 GREEN ACRES  
Avenue  
Osage MN 56570