



MLS 7424665 Residential

**\$566,900**

4,020 sq ft  
4 bedrooms  
2 baths

13520 W LAKE SALLIE Drive  
Detroit Lakes MN 56501

Status: Active

**Description:**

Beautiful country property in the heart of lakes country!! This updated home offers you all the amenities of modern country living right near the city of Detroit Lakes. Main floor living plus the basement offer lots of space and the recent addition to the home added a vaulted great room, loft space, and wrap-around front porch. The large yard offers impeccable outdoor spaces as well. Numerous updates, new appliances, multiple outbuildings, tons of wildlife around the area, and room to roam. Come see this amazing country home and all that it has to offer!!

**Additional Details:**

Year Built	1986
Lot Acres	5
Lot Dimensions	5
Garage Stalls	2
School District	22
Taxes	\$2,114
Taxes with Assessments	\$2,114
Tax Year	2022

**Additional Features:**

**Basement:** Block, Crawl Space **Fuel:** Natural Gas **Garage:** 2 **Heat:** Hot Water **Sewer:** Septic System Compliant - Yes **Water:** Well **Air Conditioning:** Wall Unit(s)

**Driving Directions:**

West side of Lake Sallie



Listed By:  
SKY LODGE PROPERTIES MN, LLC

Affinity Real Estate Inc. participates in the Regional Multiple Listing Service of Minnesota, Inc Broker Reciprocity (sm) program, allowing us to display other broker's listings on our website. All properties are subject to prior sale, change or withdrawal.



**Call Affinity Real Estate**

**218-237-3333**

**info@affinityrealestate.com**



**Affinity Real Estate - 600 Park Avenue South - Park Rapids MN 56470**



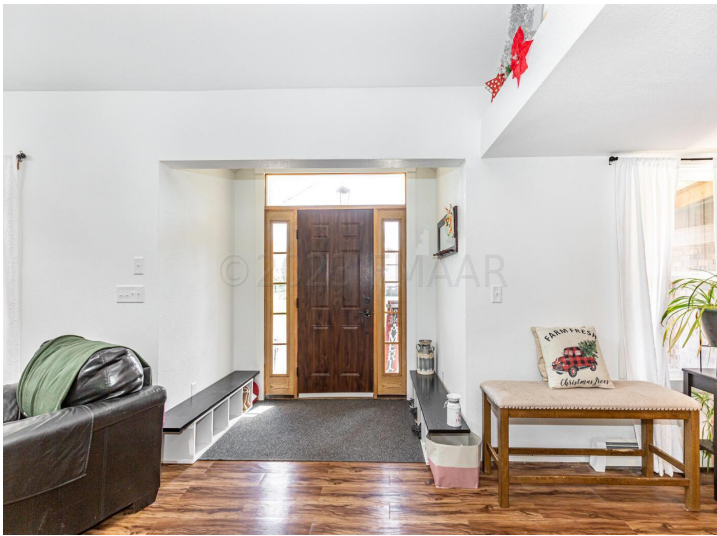


website: [www.AffinityRealEstate.com](http://www.AffinityRealEstate.com) | email: [info@affinityrealestate.com](mailto:info@affinityrealestate.com) | office: 218-237-3333 | fax: 218-237-3377

**Affinity**  
REAL ESTATE INC

**\$566,900**  
MLS 7424665 Residential  
13520 W LAKE SALLIE  
Drive  
Detroit Lakes MN 56501





website: [www.AffinityRealEstate.com](http://www.AffinityRealEstate.com) | email: [info@affinityrealestate.com](mailto:info@affinityrealestate.com) | office: 218-237-3333 | fax: 218-237-3377

**Affinity**  
REAL ESTATE INC

**\$566,900**  
MLS 7424665 Residential  
13520 W LAKE SALLIE  
Drive  
Detroit Lakes MN 56501



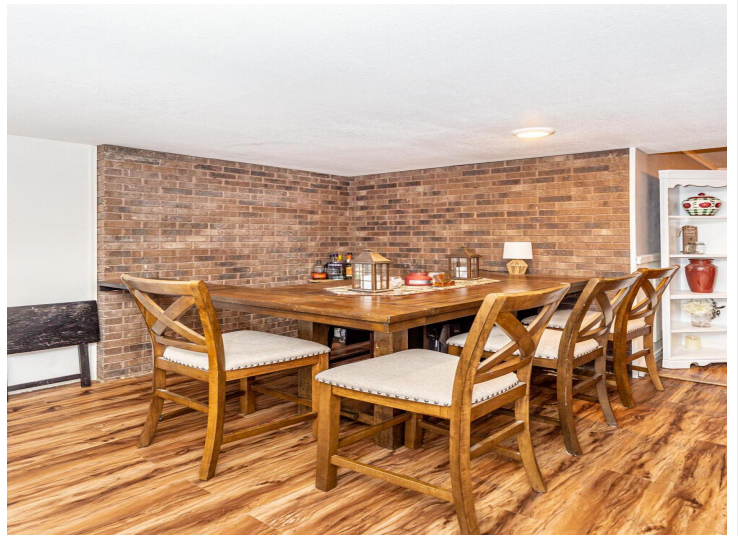


website: [www.AffinityRealEstate.com](http://www.AffinityRealEstate.com) | email: [info@affinityrealestate.com](mailto:info@affinityrealestate.com) | office: 218-237-3333 | fax: 218-237-3377

**Affinity**  
REAL ESTATE INC

**\$566,900**  
MLS 7424665 Residential  
13520 W LAKE SALLIE  
Drive  
Detroit Lakes MN 56501





website: [www.AffinityRealEstate.com](http://www.AffinityRealEstate.com) | email: [info@affinityrealestate.com](mailto:info@affinityrealestate.com) | office: 218-237-3333 | fax: 218-237-3377

**Affinity**  
REAL ESTATE INC

**\$566,900**  
MLS 7424665 Residential  
13520 W LAKE SALLIE  
Drive  
Detroit Lakes MN 56501





website: [www.AffinityRealEstate.com](http://www.AffinityRealEstate.com) | email: [info@affinityrealestate.com](mailto:info@affinityrealestate.com) | office: 218-237-3333 | fax: 218-237-3377

**Affinity**  
REAL ESTATE INC

**\$566,900**  
MLS 7424665 Residential  
13520 W LAKE SALLIE  
Drive  
Detroit Lakes MN 56501





website: [www.AffinityRealEstate.com](http://www.AffinityRealEstate.com) | email: [info@affinityrealestate.com](mailto:info@affinityrealestate.com) | office: 218-237-3333 | fax: 218-237-3377



**\$566,900**  
 MLS 7424665 Residential  
 13520 W LAKE SALLIE  
 Drive  
 Detroit Lakes MN 56501





website: [www.AffinityRealEstate.com](http://www.AffinityRealEstate.com) | email: [info@affinityrealestate.com](mailto:info@affinityrealestate.com) | office: 218-237-3333 | fax: 218-237-3377



**\$566,900**  
 MLS 7424665 Residential  
 13520 W LAKE SALLIE  
 Drive  
 Detroit Lakes MN 56501