



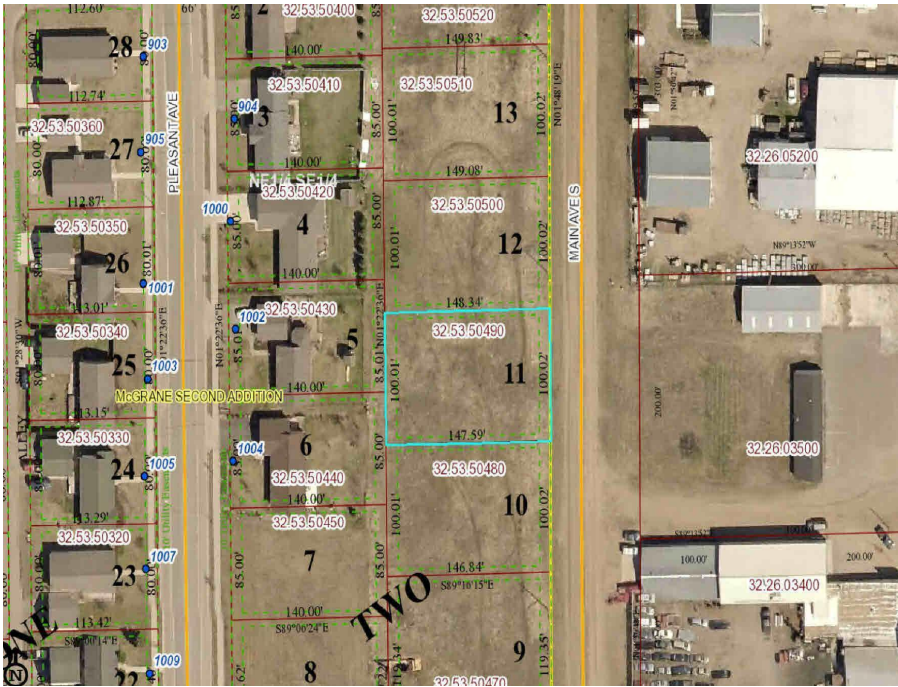
MLS 5669904 Land

\$17,500

0.34 Acres
Raw Land

1003 Main Avenue
Park Rapids MN 56470

Status: Active



Description:

A1426 Level building lot with the utilities in the street and ready to build. Conveniently located close to shops and restaurants.

Additional Details:

Lot Acres	0.34
Lot Dimensions	100x147x100x148
School District	309
Taxes	\$228
Taxes with Assessments	\$590
Tax Year	2023

Additional Features:

Driving Directions:

From Hwys. 71/34 in Park Rapids. West on Hwy 34 to Main Ave. South/left on Main Ave South. Follow to lots on the right located just North of 11th St. W.



Listed By:
Coldwell Banker Crown Realtors

Affinity Real Estate Inc. participates in the Regional Multiple Listing Service of Minnesota, Inc Broker Reciprocity (sm) program, allowing us to display other broker's listings on our website. All properties are subject to prior sale, change or withdrawal.



Call Affinity Real Estate

218-237-3333

info@affinityrealestate.com



Affinity Real Estate - 600 Park Avenue South - Park Rapids MN 56470