



MLS 5755113 Lake Home

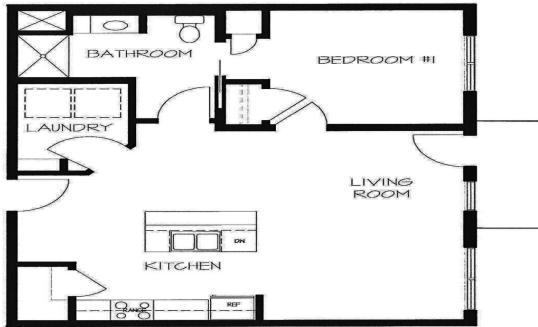
\$247,400

800 sq ft
1 bedrooms
1 baths

715 Lake Shore Drive
Bemidji MN 56601

Waterfront: Bemidji (main lake)

Status: Closed



1 BEDROOM
#109

©NWMA

Description:

Welcome to Bemidji's premier condominium development on the South Shore of Lake Bemidji! The Bixby will offer secure indoor parking, two elevators, triple pane windows, soundproof insulation, and private balconies. Quartz countertops and Onyx Shower systems in every unit. Appliance, kitchen and trim packages available. Association fee will include natural gas, water, sewer and refuse. This floor plan, 'The Babe' is located on either end of the building allowing both lake and south facing views. 1 bedroom 1 bath and 800 sf., unit 209 is located on the east end of the second floor. The Babe is available on both floors. Choose early and get your favorite unit just the way you like it!

Additional Details:

Year Built	2022
Lot Dimensions	348x228
Garage Stalls	1
School District	31
Taxes	(unreported)
Taxes with Assessments	(unreported)
Tax Year	2021

Additional Features:

Basement: None **Fuel:** Electric **Garage:** 1 **Heat:** Heat Pump **Sewer:** City Sewer/Connected **Water:** City Water/Connected **Air Conditioning:** Central Air

Driving Directions:

East on 1st Street to Central Ave SE, Left to Lakeshore Drive



Listed By:
Lake-N-Woods Realty, Inc.

Affinity Real Estate Inc. participates in the Regional Multiple Listing Service of Minnesota, Inc Broker Reciprocity (sm) program, allowing us to display other broker's listings on our website. All properties are subject to prior sale, change or withdrawal.



Call Affinity Real Estate

218-237-3333

info@affinityrealestate.com

MLS



Affinity Real Estate - 600 Park Avenue South - Park Rapids MN 56470