



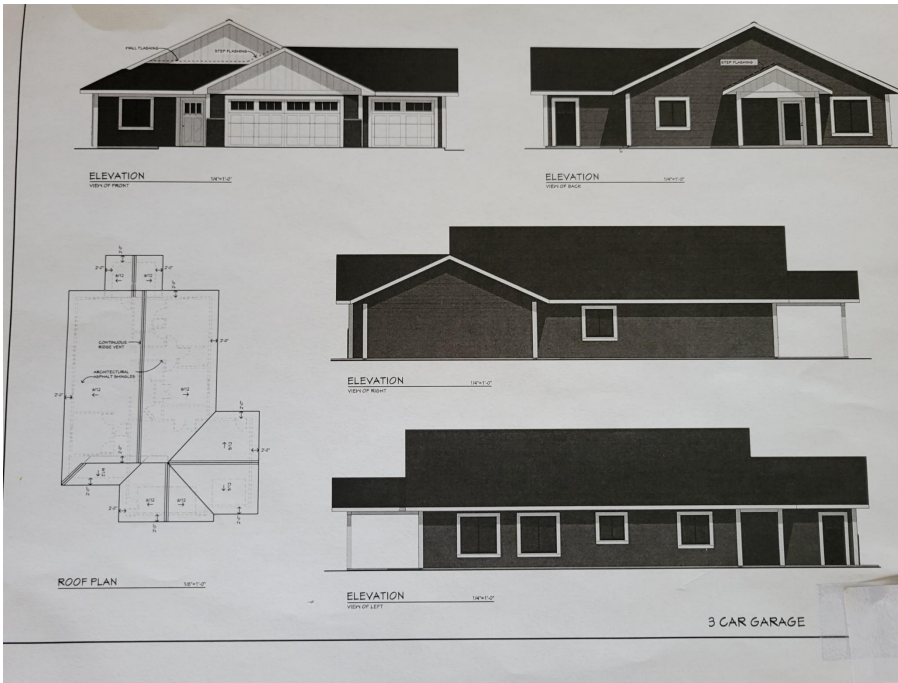
MLS 6192931 Residential

\$279,900

1,342 sq ft
2 bedrooms
2 baths

470 Spruce Drive
Staples MN 56479

Status: Pending



Description:

Construction in-progress with an estimated completion date of mid-July. This 1,342 finished sq ft home sits in a small community neighborhood with back yard privacy. Amenities included are quartz counter tops, Samsung finger print resistant stainless appliances, in-floor heat throughout the house and the 3-car attached garage, plus forced air furnace also for the house only, cement driveway, office space, carpeted bedrooms with luxury vinyl tile floors for rest of the home. The exterior will be a charcoal/white vinyl siding. Thanks for considering our listing.

Additional Details:

Year Built	2022
Lot Acres	0.93
Lot Dimensions	80x455x100x400
Garage Stalls	3
School District	2170
Taxes	\$2,072
Taxes with Assessments	\$2,072
Tax Year	2021

Additional Features:

Basement: None **Fuel:** Natural Gas **Garage:** 3 **Heat:** Forced Air, Radiant Floor **Sewer:** City Sewer/Connected **Water:** City Water/Connected **Air Conditioning:** Central Air

Driving Directions:

From Staples take Airport Rd N. to Right on Spruce Drive to home on right.



Listed By:
Century 21 Brainerd Realty

Affinity Real Estate Inc. participates in the Regional Multiple Listing Service of Minnesota, Inc Broker Reciprocity (sm) program, allowing us to display other broker's listings on our website. All properties are subject to prior sale, change or withdrawal.



Call Affinity Real Estate

218-237-3333

info@affinityrealestate.com



Affinity Real Estate - 600 Park Avenue South - Park Rapids MN 56470