



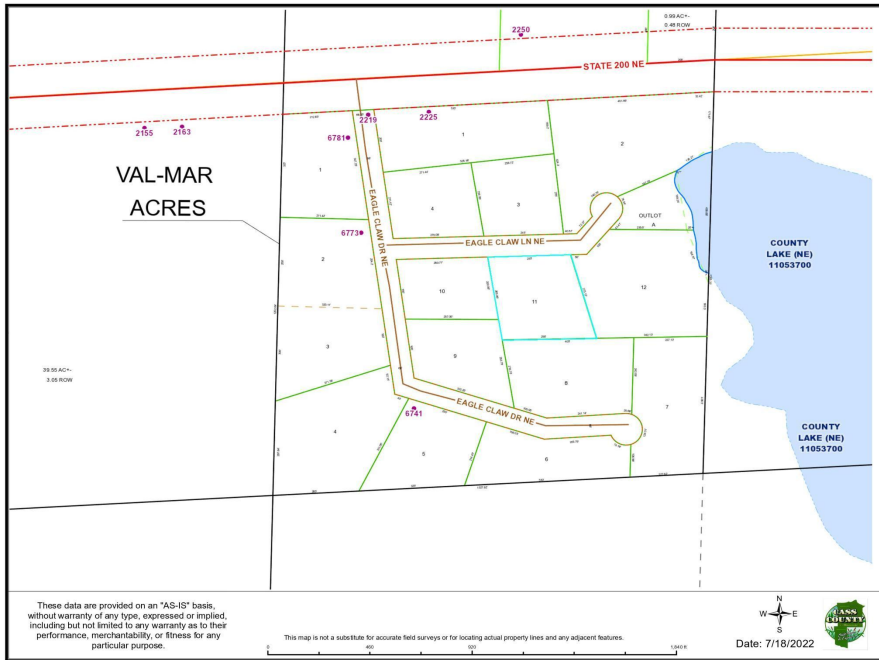
MLS 6265153 Land

**\$15,000**

1.65 Acres  
Finished Lot(s)

Lot 11 Eagle Claw Lane  
Boy River MN 56672

Status: Closed



#### Description:

1.65 Acres in the heart of Chippewa National Forest. Heavily wooded and secluded from noise or traffic, but quickly connects to County Rd 200 for easy access to the nearby town of Longville. No covenants or restrictions. Bring your camper or build. The County requires 10' setbacks from the nearest property or 53' setbacks from the middle of the road. There are 1000's acres of public land nearby. A perfect up north retreat for hunting, four-wheeling, snowmobiling or getting out on the lake! Information deemed accurate but not guaranteed, buyers and agents to verify all information.

#### Additional Details:

Lot Acres	1.65
Lot Dimensions	255x266x290x276
School District	118
Taxes	\$20
Taxes with Assessments	\$20
Tax Year	2022

#### Additional Features:

#### Driving Directions:

From Longville take State Highway 8 to Highway 200. Right on Eagle Claw Dr then Left on Eagle Claw Lane.



Listed By:  
JPW Realty

Affinity Real Estate Inc. participates in the Regional Multiple Listing Service of Minnesota, Inc Broker Reciprocity (sm) program, allowing us to display other broker's listings on our website. All properties are subject to prior sale, change or withdrawal.



Call Affinity Real Estate

**218-237-3333**

[info@affinityrealestate.com](mailto:info@affinityrealestate.com)



Affinity Real Estate - 600 Park Avenue South - Park Rapids MN 56470