



MLS 6384864 Lake Land

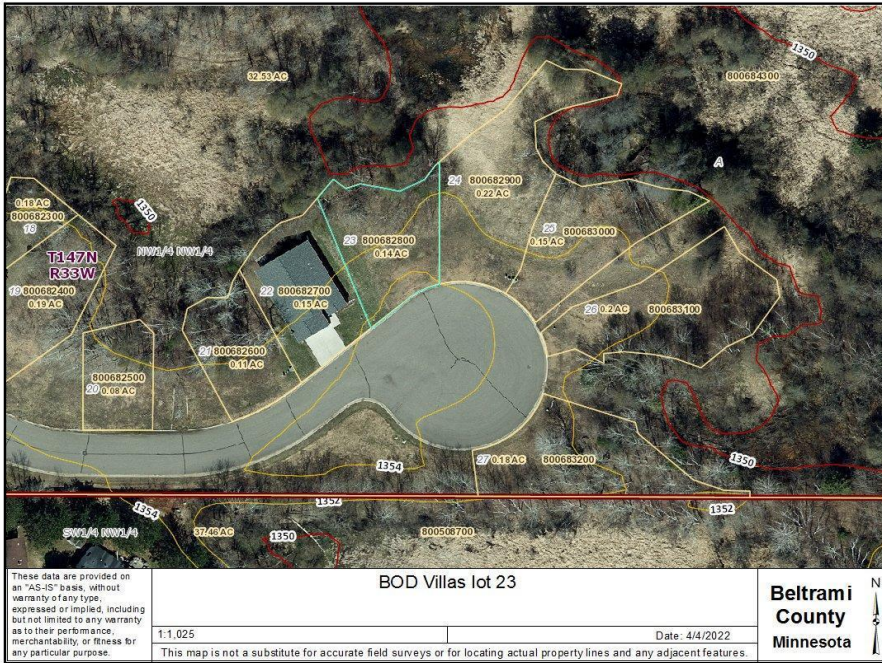
\$22,000

0.14 Acres
Other

4240 Irvine Avenue
Bemidji MN 56601

Waterfront: Deer

Status: Active



Description:

A private community, Villas at Natures Edge, situated within 35 acres and close to medical facilities, the university, shopping, lakes, and trails. This nicely wooded lot is situated on a paved cul-de-sac. City water and sewer are available, and the association maintains the street, snow and lawn care, and garbage.

Additional Details:

Lot Acres	0.14
Lot Dimensions	100x60x90x60
School District	31
Taxes	\$384
Taxes with Assessments	\$384
Tax Year	2023

Additional Features:

Driving Directions:

North on Irvine Avenue, just past Anne street on right. Follow street in development to the right.



Listed By:
Lake-N-Woods Realty, Inc.

Affinity Real Estate Inc. participates in the Regional Multiple Listing Service of Minnesota, Inc Broker Reciprocity (sm) program, allowing us to display other broker's listings on our website. All properties are subject to prior sale, change or withdrawal.



Call Affinity Real Estate

218-237-3333

info@affinityrealestate.com



Affinity Real Estate - 600 Park Avenue South - Park Rapids MN 56470