



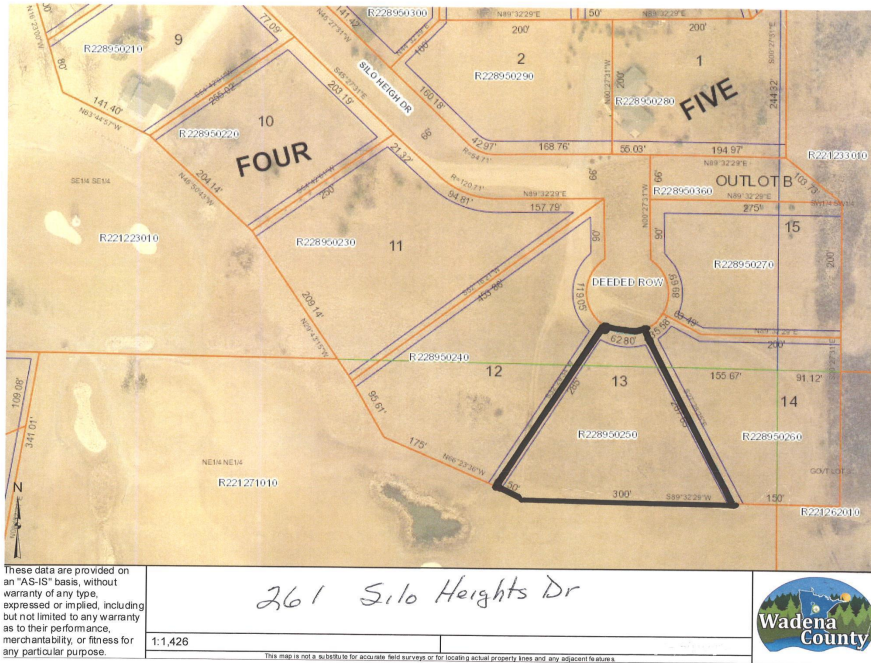
MLS 6406153 Land

\$29,900

1.21 Acres
Finished Lot(s)

261 Silo Heights Drive
Wadena MN 56482

Status: Active



Description:

DRASTIC PRICE REDUCTION.....seller finance is possible !JUST a Driver, 3 wood and a wedge from the CLUB HOUSE. Southern exposure for maximum winter comfort also. Possible Contract for Deed.

Additional Details:

Lot Acres	1.21
Lot Dimensions	63x287x350x285
School District	2155
Taxes	\$340
Taxes with Assessments	\$340
Tax Year	2023

Additional Features:

Driving Directions:

From Wadena north on Hwy 71 approximately 4 miles to Leaf River Road, then east 1 mile to Silo Heights Dr, turn right to property.



Listed By:
The Gores Company

Affinity Real Estate Inc. participates in the Regional Multiple Listing Service of Minnesota, Inc Broker Reciprocity (sm) program, allowing us to display other broker's listings on our website. All properties are subject to prior sale, change or withdrawal.



Call Affinity Real Estate

218-237-3333

info@affinityrealestate.com



Affinity Real Estate - 600 Park Avenue South - Park Rapids MN 56470