



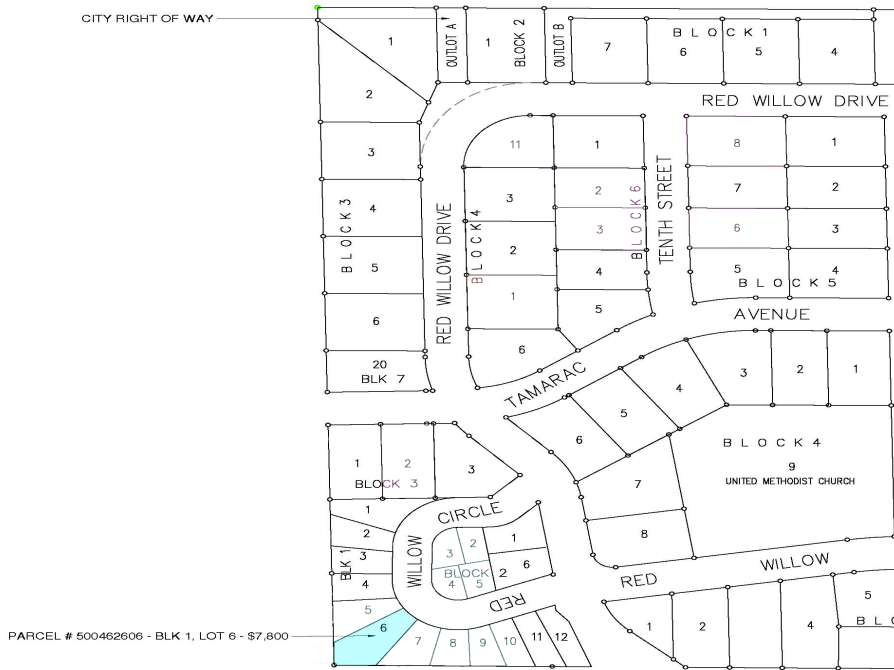
MLS 6444719 Land

\$7,800

0.18 Acres
Subdivided

1113 Red Willow Circle
Frazee MN 56544

Status: Active



Description:

Twin home Building Site in the Red Willow Heights development located in the city of Frazee. This is an established neighborhood with a hometown feel. The development offers city water, city sewer & natural gas! Enjoy the amenities of small town living in the lakes area! Covenants Apply

Additional Details:

Lot Acres	0.18
Lot Dimensions	Irregular
School District	23
Taxes	(unreported)
Taxes with Assessments	(unreported)
Tax Year	2023

Additional Features:

Driving Directions:

US-10E left on Co Hwy 10, left on 5th St W left on Birch Ae W left on Red Willow Dr left on Red Willow Circle



Listed By:
Dakota Plains Realty

Affinity Real Estate Inc. participates in the Regional Multiple Listing Service of Minnesota, Inc Broker Reciprocity (sm) program, allowing us to display other broker's listings on our website. All properties are subject to prior sale, change or withdrawal.



Call Affinity Real Estate

218-237-3333

info@affinityrealestate.com



Affinity Real Estate - 600 Park Avenue South - Park Rapids MN 56470