



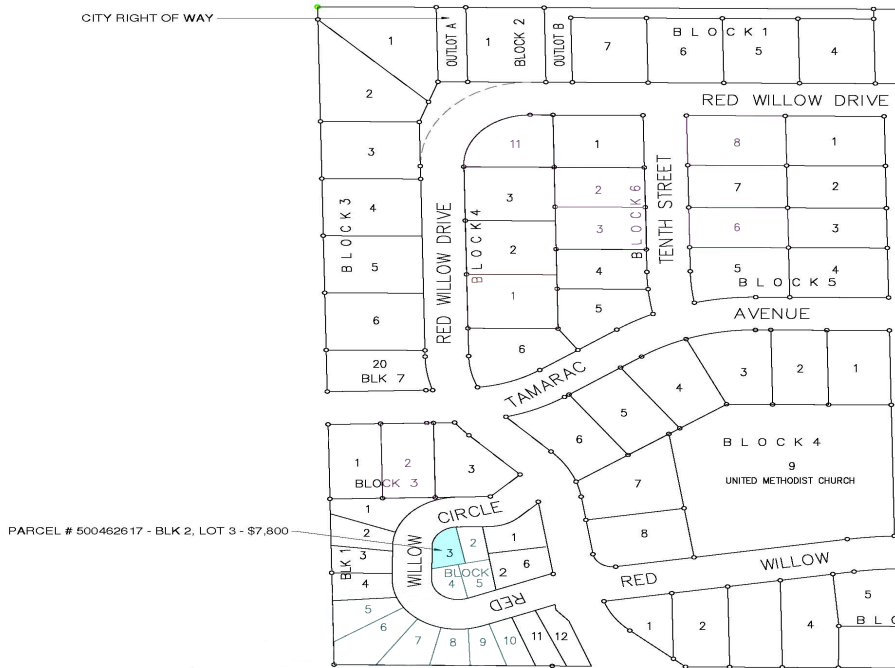
MLS 6444763 Land

**\$7,800**

0.07 Acres  
Subdivided

Lot 3 Block 2 Red Willow Circle  
Frazee MN 56544

Status: Active



**Description:**

Twin home Building Site in the Red Willow Heights development located in the city of Frazee. This is an established neighborhood with a hometown feel. The development offers city water, city sewer & natural gas! Enjoy the amenities of small town living in the lakes area! Covenants Apply

**Additional Details:**

Lot Acres	0.07
Lot Dimensions	irregular
School District	23
Taxes	(unreported)
Taxes with Assessments	(unreported)
Tax Year	2023

**Additional Features:**

**Driving Directions:**

Us-10 E turn left on Co Hwy 1 turn left on 5th St NW turn left on Birch Ave W Turn left on Red Willow Dr turn left on Red Willow Circle



Listed By:  
Dakota Plains Realty

Affinity Real Estate Inc. participates in the Regional Multiple Listing Service of Minnesota, Inc Broker Reciprocity (sm) program, allowing us to display other broker's listings on our website. All properties are subject to prior sale, change or withdrawal.



Call Affinity Real Estate

**218-237-3333**

[info@affinityrealestate.com](mailto:info@affinityrealestate.com)



Affinity Real Estate - 600 Park Avenue South - Park Rapids MN 56470