



MLS 6467946 Lake Land

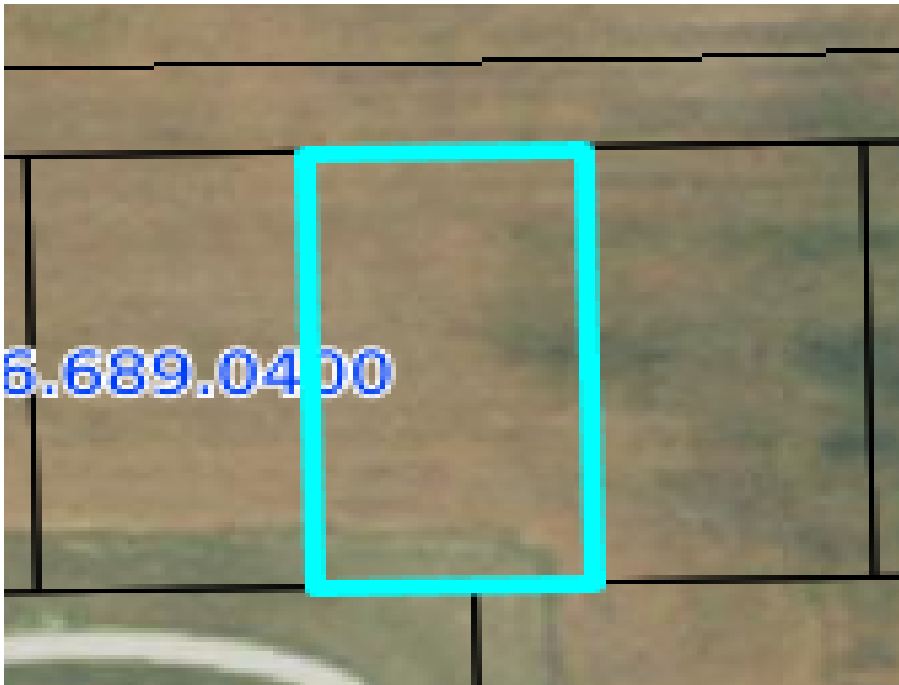
**\$52,000**

0.29 Acres  
Plat Designed

2309 Scenic Lane  
Hawley MN 56549

Waterfront: Unnamed Lake

Status: Active



**Description:**

No taxes or specials due until May 2026! Escape the city, Hawley Minnesota is a 25 minute drive from Fargo Moorhead area, features Outstanding schools, close to many lakes and outdoor activities. Prairie Hills Estates, is a newer development on the North side of town, with a country feel, amenities feature Pickleball and Basketball Courts, a picnic shelter, a tree lined walking path and room for adding future playground equipment. Take the short drive and check us out!

**Additional Details:**

Lot Acres	0.29
Lot Dimensions	82x154.91
School District	150
Taxes	\$308
Taxes with Assessments	\$308
Tax Year	2025

**Additional Features:**

**Driving Directions:**

Turn North off of Hwy 10, turn left onto 15th Street South by the Super Value, go .2 miles turn Left onto Westgate Dr, which turns into Valley View. Continue to Scenic Lane.



Listed By:  
REALTY XPERTS

Affinity Real Estate Inc. participates in the Regional Multiple Listing Service of Minnesota, Inc Broker Reciprocity (sm) program, allowing us to display other broker's listings on our website. All properties are subject to prior sale, change or withdrawal.



**Call Affinity Real Estate**

**218-237-3333**

**info@affinityrealestate.com**



**Affinity Real Estate - 600 Park Avenue South - Park Rapids MN 56470**