



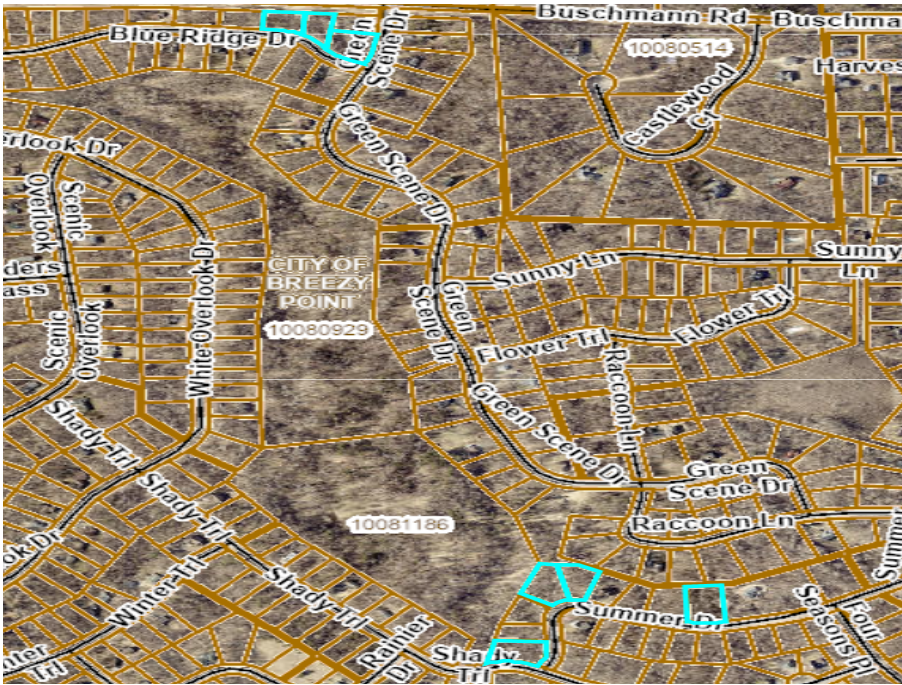
MLS 6504377 Land

**\$98,900**

4.53 Acres  
Raw Land

TBD Summer Drive & Blue Ridge  
Breezy Point MN 56472

Status: Active



**Description:**

Exclusive Contractor Special: Purchase Seven Lots at Once! This exceptional offer encompasses three lots on Blue Ridge Drive and four on Summer Drive, all nestled within the prestigious Pequot Lakes School District. Ideal for developers looking to build, these lots provide unparalleled access to the finest amenities Breezy Point has to offer. From exquisite dining options to renowned golf courses and healthcare facilities, the area provides a wealth of conveniences. With Pelican Lake and the Paul Bunyan Trail nearby, outdoor enthusiasts will delight in the endless recreational possibilities. Don't delay—seize this rare opportunity to own a piece of Breezy Point's tranquil paradise today!

**Additional Details:**

Lot Acres	4.53
Lot Dimensions	multiple
School District	186
Taxes	\$602
Taxes with Assessments	\$602
Tax Year	2024

**Additional Features:**

**Driving Directions:**

Breezy Point Ace Hardware Head east on Co Rd 11 toward County Rd 4 N/Red Pine Dr Turn left to stay on Co Rd 11 for 1.8 miles Turn left onto Buschmann Rd for .7 miles Turn left onto Green Scene Dr and arrive at Blue Ridge Drive



Listed By:  
Coldwell Banker Realty

Affinity Real Estate Inc. participates in the Regional Multiple Listing Service of Minnesota, Inc Broker Reciprocity (sm) program, allowing us to display other broker's listings on our website. All properties are subject to prior sale, change or withdrawal.



Call Affinity Real Estate

**218-237-3333**

[info@affinityrealestate.com](mailto:info@affinityrealestate.com)



Affinity Real Estate - 600 Park Avenue South - Park Rapids MN 56470