

MLS 6568815 Lake Home

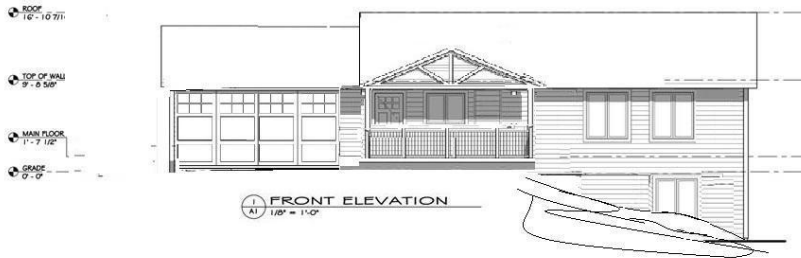
\$439,000

2,080 sq ft
2 bedrooms
2 baths

716 Park Avenue
Park Rapids MN 56470

Waterfront: Fishhook River

Status: Active



Description:

Very rare! Brand new construction home with Fish Hook River beach frontage and easy access into Fish Hook Lake. Gorgeous sunrise views of Itasca Park-like towering Norway pines on a sandy shore with deeded marina boat dock space. This home is on a historic location within the city limits of Park Rapids with 2.5 acres of always maintained common grounds. Built new with frost-free insulated in-slab heat, insulated garage floor heat and natural gas FAU with central air conditioning. All city services are connected and ready to go for year round worry free water, sewer and natural gas heating. Direct access two car heated garage. Main floor bedroom with open kitchen and living spaces. Lower level great room with full walkout patio access. Beautiful maintenance free siding, Marvin Ultimate windows throughout. Gorgeous log rafter & post dormer entry over the front porch deck. "Buy it now" and customize the interior to make it your "forever" lake front dream home. Don't miss out!

Additional Details:

Year Built	2024
Lot Acres	0.05
Lot Dimensions	66x26
Garage Stalls	2
School District	309
Taxes	\$1,056
Taxes with Assessments	\$1,056
Tax Year	2024

Additional Features:

Basement: Daylight/Lookout Windows, Drain Tiled, Egress Window(s), Full, Insulating Concrete Forms, Walkout **Fuel:** Electric, Natural Gas
Garage: 2 **Heat:** Forced Air, Radiant Floor **Sewer:** City Sewer/Connected **Water:** City Water/Connected **Air Conditioning:** Central Air

Driving Directions:

Seven blocks North of US highway 34 on US Highway 71 at Monaco Ln.



Listed By:
Savvy Avenue, LLC

Affinity Real Estate Inc. participates in the Regional Multiple Listing Service of Minnesota, Inc Broker Reciprocity (sm) program, allowing us to display other broker's listings on our website. All properties are subject to prior sale, change or withdrawal.



Call Affinity Real Estate

218-237-3333

info@affinityrealestate.com



Affinity Real Estate - 600 Park Avenue South - Park Rapids MN 56470