



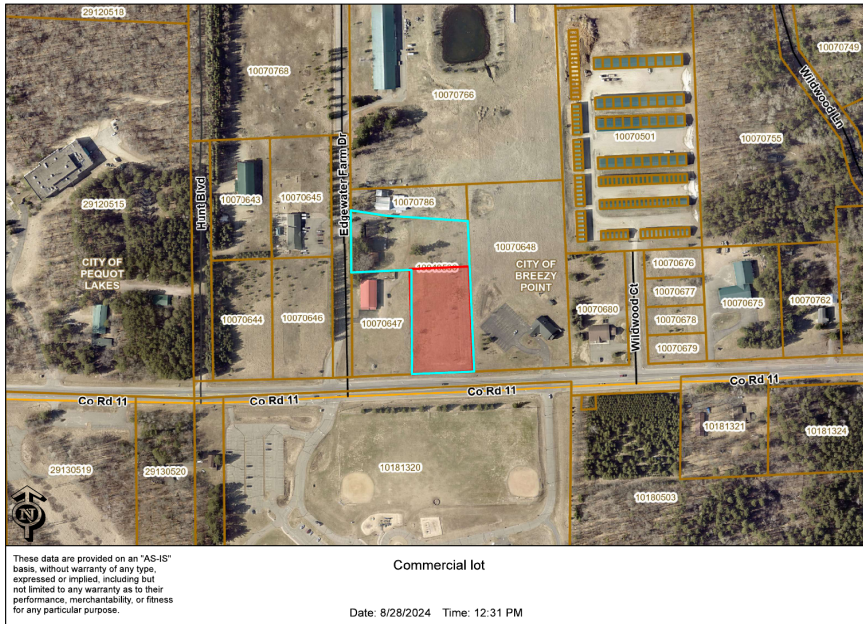
MLS 6593462 Land

\$195,000

1.8 Acres
Raw Land

TBD County Road 11
Pequot Lakes MN 56472

Status: Active



These data are provided on an "AS-IS" basis, without warranty of any type, expressed or implied, including but not limited to any warranty as to their performance, merchantability, or fitness for any particular purpose.

Commercial lot

Date: 8/28/2024 Time: 12:31 PM

Description:

(description unavailable)

Additional Details:

Lot Acres	1.8
Lot Dimensions	212 x 366
School District	186
Taxes	\$2,266
Taxes with Assessments	\$2,316
Tax Year	2024

Additional Features:

Driving Directions:

Located on Cty Rd 11 across from Eagle View Elementary school between Breezy Point and Pequot Lakes.



Listed By:
RE/MAX Results - Crosslake

Affinity Real Estate Inc. participates in the Regional Multiple Listing Service of Minnesota, Inc Broker Reciprocity (sm) program, allowing us to display other broker's listings on our website. All properties are subject to prior sale, change or withdrawal.



Call Affinity Real Estate

218-237-3333

info@affinityrealestate.com



Affinity Real Estate - 600 Park Avenue South - Park Rapids MN 56470