



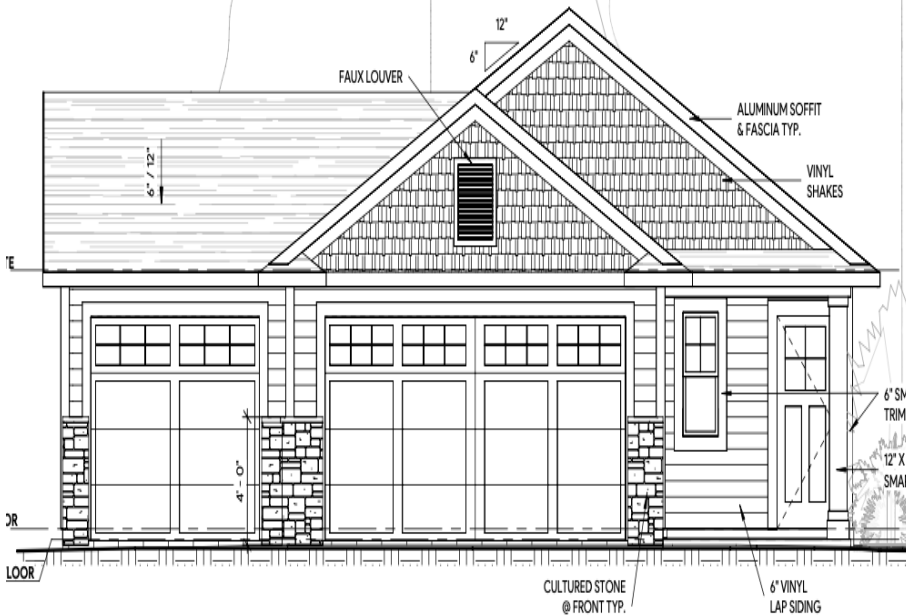
MLS 6609753 Residential

\$325,000

1,571 sq ft
2 bedrooms
2 baths

1091 Holton Ave
Brainerd MN 56401

Status: Active



Description:

This one-level Dogwood XL plan is under construction. This is a slab home with two bedrooms, two bathrooms and a three car garage. Primary bedroom ensuite with a spacious walk-in closet. The kitchen has a large center island, stainless steel appliance package, LVP flooring and custom cabinetry. Enjoy the peacefulness from the four season porch! This home offers comfortable one level living in the Brainerd Oaks development

Additional Details:

Year Built	2024
Lot Acres	0.22
Lot Dimensions	65x143x67x144
Garage Stalls	3
School District	181
Taxes	(unreported)
Taxes with Assessments	(unreported)
Tax Year	2024

Additional Features:

Basement: Slab **Fuel:** Natural Gas **Garage:** 3 **Heat:** Forced Air **Sewer:** City Sewer/Connected **Water:** City Water/Connected **Air Conditioning:** Central Air

Driving Directions:

Oak St to Holton Ave to home on left.



Listed By:
Basswood Real Estate LLC

Affinity Real Estate Inc. participates in the Regional Multiple Listing Service of Minnesota, Inc Broker Reciprocity (sm) program, allowing us to display other broker's listings on our website. All properties are subject to prior sale, change or withdrawal.



Call Affinity Real Estate

218-237-3333

info@affinityrealestate.com



Affinity Real Estate - 600 Park Avenue South - Park Rapids MN 56470