



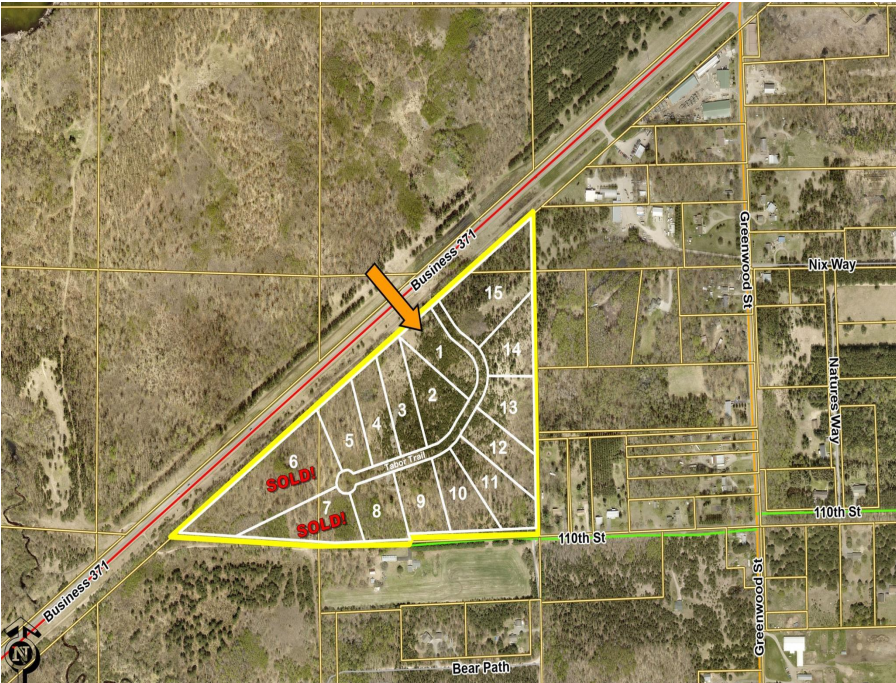
MLS 6621914 Land

**\$185,000**

2.63 Acres  
Plat Designed

(Lot 1) 11205 Tabor Trail  
Brainerd MN 56401

Status: Active



**Description:**

Unlock Your Business Potential in Brainerd, MN! Welcome to the newly developed Northland Industrial Park, strategically located along Business Highway 371 for optimal visibility and accessibility. This prime location offers a unique opportunity for businesses looking to grow and thrive in a vibrant community. Key features include a prime location, flexible lot sizes, business-friendly environment and proximity to amenities.

**Additional Details:**

Lot Acres	2.63
Lot Dimensions	266.97' x 660.17' x 589.31'
School District	181
Taxes	\$54
Taxes with Assessments	\$54
Tax Year	2025

**Additional Features:**

**Driving Directions:**

From The Historic Brainerd Water Tower located at Washington Street and S 6th Street - South on South 6th Street/Business Hwy 371 approx. 3 miles - West on Tabor Trail to the lots



Listed By:  
Close-Converse Commercial Prop

Affinity Real Estate Inc. participates in the Regional Multiple Listing Service of Minnesota, Inc Broker Reciprocity (sm) program, allowing us to display other broker's listings on our website. All properties are subject to prior sale, change or withdrawal.



Call Affinity Real Estate

**218-237-3333**

[info@affinityrealestate.com](mailto:info@affinityrealestate.com)



Affinity Real Estate - 600 Park Avenue South - Park Rapids MN 56470