



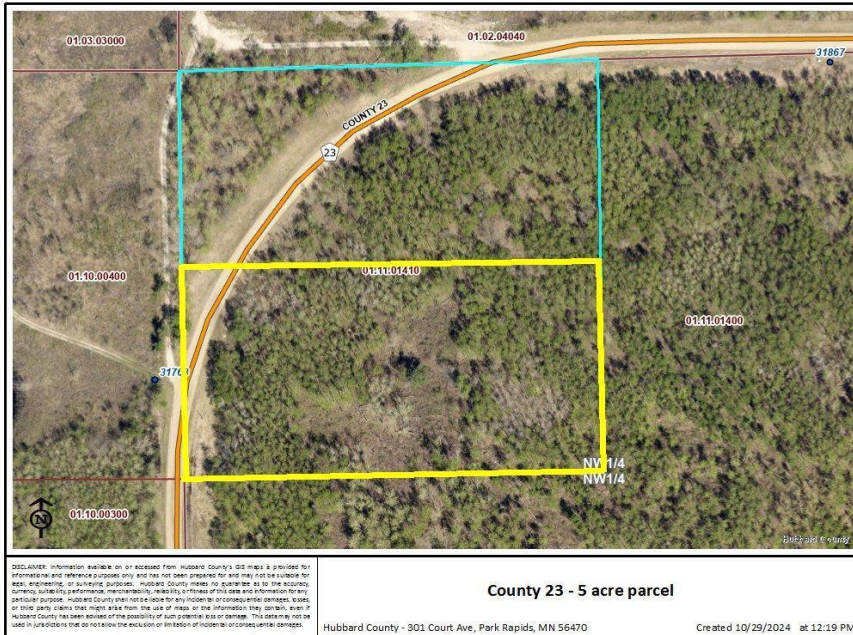
MLS 6625555 Land

\$45,000

5 Acres
Raw Land

TBD County 23
Akeley MN 56433

Status: Pending



County 23 - 5 acre parcel

Hubbard County - 301 Court Ave, Park Rapids, MN 56470 Created 10/29/2024 at 12:19 PM

Description:

This wooded 5 acre parcel is located on the south border of the Paul Bunyan State Forest. Easy access to thousands of acres of State Forest land including the Martineau AVT/OHM trails. Mostly level elevation with all high ground. Great spot to build or camp, easy access off County Road just a few miles from Akeley.

Additional Details:

Lot Acres	5
Lot Dimensions	330x660
School District	113
Taxes	\$270
Taxes with Assessments	\$270
Tax Year	2024

Additional Features:

Driving Directions:

From Akeley, go north on State 64 to right on County 23. Follow for 2 miles to property on right.



Listed By:
Edina Realty, Inc.

Affinity Real Estate Inc. participates in the Regional Multiple Listing Service of Minnesota, Inc Broker Reciprocity (sm) program, allowing us to display other broker's listings on our website. All properties are subject to prior sale, change or withdrawal.



Call Affinity Real Estate

218-237-3333

info@affinityrealestate.com



Affinity Real Estate - 600 Park Avenue South - Park Rapids MN 56470