



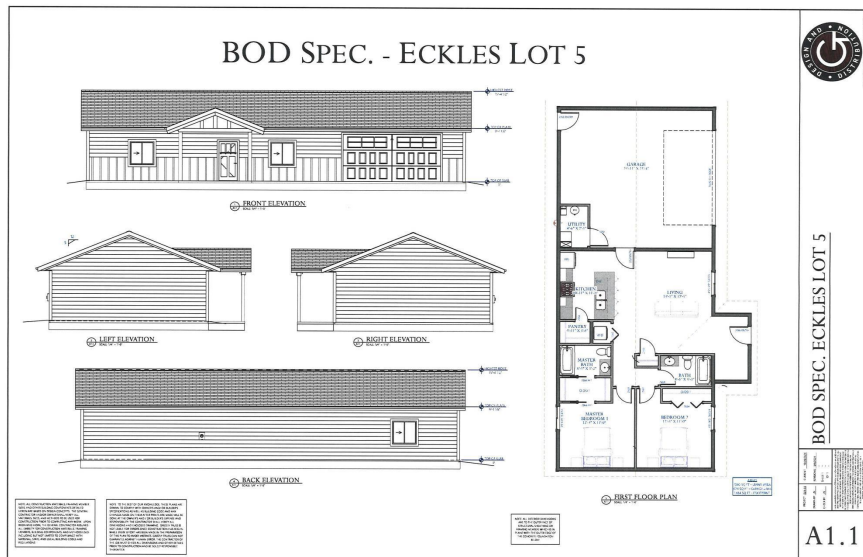
MLS 6632586 Residential

\$264,900

1,060 sq ft
2 bedrooms
2 baths

6335 Wrenner Lane
Bemidji MN 56601

Status: Pending



Description:

Discover a newly built home that combines modern finesse with a robust design, all set on a commanding 2-acre lot featuring a mix of open space and trees. This single-level residence offers 2 spacious bedrooms and 2 full baths, complete with premium touches like in-floor heating, solid core doors, LP SmartSide siding, and sturdy Marvin Windows.

Step inside and experience the expansive open-concept layout, where the living area flows seamlessly into the kitchen, anchored by a substantial center island that seats up to four. A generous walk-in pantry enhances functionality, providing the practicality everyone appreciates.

Nestled in a serene new development just a few miles from Bemidji, this home is an ideal sanctuary away from the daily grind. Personalize your space and choose from a robust selection of color options for cabinets, paint, flooring, doors, and siding to ensure your home reflects your unique style and personality.

The fully finished attached garage offers ample space for tools, equipment, or vehicles, designed for durability and efficiency. Plus, don't overlook our Down Payment Assistance options to help make your dream home a reality. Step up and claim your slice of tranquility today!

Additional Details:

Year Built	2025
Lot Acres	2.02
Lot Dimensions	306.01x287.10
Garage Stalls	2
School District	31
Taxes	(unreported)
Taxes with Assessments	(unreported)
Tax Year	2024

Additional Features:

Basement: None **Fuel:** Propane **Garage:** 2 **Heat:** Ductless Mini-Split **Sewer:** Septic System Compliant - Yes **Water:** Submersible - 4 Inch **Air**

Call Affinity Real Estate
Listed By:
Lake-N-Woods Realty



218-237-3333
info@affinityrealestate.com

Affinity Real Estate, North Park Rapids Road, Park Rapids, MN 56670. Property located at the corner of Mayflower and Eckles Rd.
Service of Minnesota, Inc Broker Reciprocity (sm) program, allowing us to display other broker's listings on our website. All properties are subject to prior sale, change or withdrawal.



Affinity Real Estate - 600 Park Avenue South - Park Rapids MN 56470