



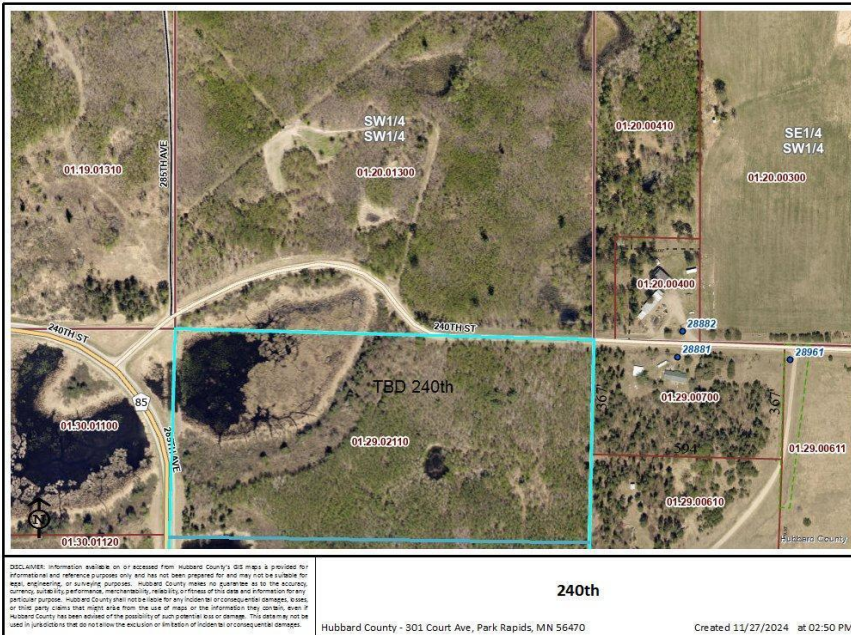
MLS 6635665 Land

\$94,200

20 Acres
Subdivided

TBD 240th Street
Akeley MN 56433

Status: Active



Description:

Discover 20 acres of pristine land NE of Nevis, Perfect for your dream retreat. This beautifully wooded tract offers excellent road access, rolling hills, and serene wildlife ponds. With great tree cover and trails throughout, you'll find several ideal building sites with easy access to power. Conveniently located near the Heartland Trail, Paul Bunyan State Forest, and numerous lakes, this property is a nature lover's paradise. Don't miss out on this incredible opportunity to own a piece of tranquility!

Additional Details:

Lot Acres	20
Lot Dimensions	1320x660
School District	113
Taxes	\$494
Taxes with Assessments	\$494
Tax Year	2024

Additional Features:

Driving Directions:

From Highways 71/34 in Park Rapids go East on 34. Past Nevis take a left on 285th to a right on 240th to sign for property.



Listed By:
Wolff & Simon Real Estate

Affinity Real Estate Inc. participates in the Regional Multiple Listing Service of Minnesota, Inc Broker Reciprocity (sm) program, allowing us to display other broker's listings on our website. All properties are subject to prior sale, change or withdrawal.



Call Affinity Real Estate
218-237-3333
info@affinityrealestate.com



Affinity Real Estate - 600 Park Avenue South - Park Rapids MN 56470