



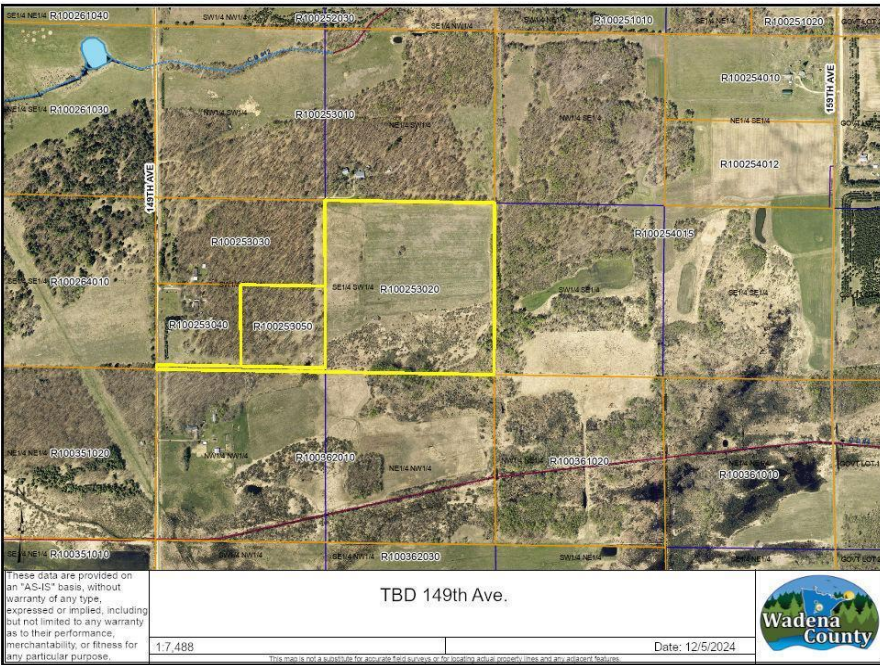
MLS 6637491 Land

**\$169,900**

50.5 Acres  
Raw Land

TBD 149th Avenue  
Sebeka MN 56477

Status: Active



**Description:**

Discover the perfect blend of wilderness and farming potential with this expansive 50+acre parcel. The property boasts fertile tillable land, ready for agricultural ventures and some lush woods. For the hunting enthusiast, deer stands offer a prime wildlife observation experience. Infrastructure is in place with a convenient manhole and approach, ensuring easy access and development possibilities. This versatile land awaits those who dream of rural tranquility with the promise of productivity.

**Additional Details:**

Lot Acres	50.5
Lot Dimensions	33x2640xIRR
School District	820
Taxes	\$236
Taxes with Assessments	\$236
Tax Year	2024

**Additional Features:**

**Driving Directions:**

From Hwys. 71/34 in Park Rapids, go South on 71 to Sebeka. Turn left in Sebeka on Minnesota Ave. Turn left on 149th Ave. Follow to property/sign on the right.



Listed By:  
Wolff & Simon Real Estate

Affinity Real Estate Inc. participates in the Regional Multiple Listing Service of Minnesota, Inc Broker Reciprocity (sm) program, allowing us to display other broker's listings on our website. All properties are subject to prior sale, change or withdrawal.



Call Affinity Real Estate

**218-237-3333**

[info@affinityrealestate.com](mailto:info@affinityrealestate.com)



Affinity Real Estate - 600 Park Avenue South - Park Rapids MN 56470