



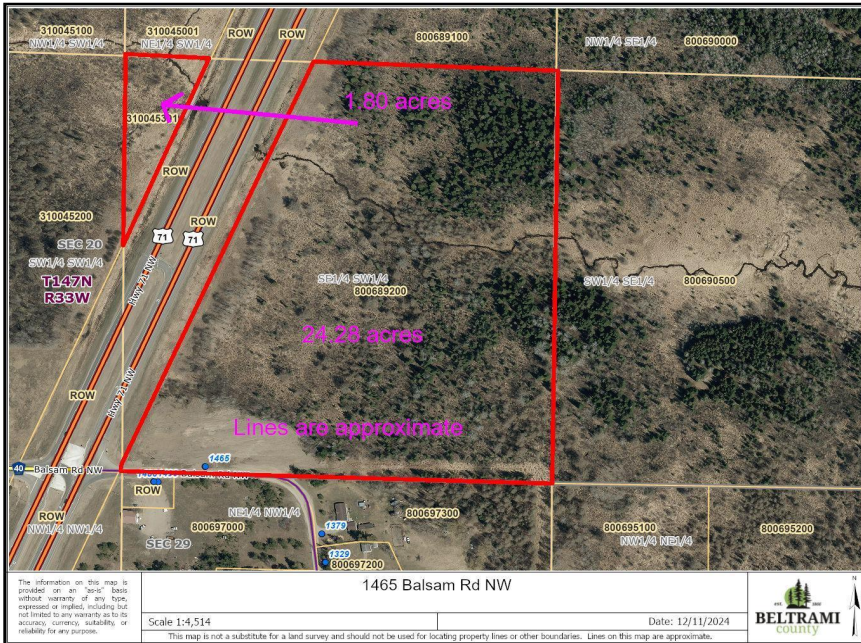
MLS 6639444 Land

**\$199,900**

26.08 Acres  
Raw Land

1465 Balsam Road  
Bemidji MN 56601

Status: Active



**Description:**

Just over 26 acres in Bemidji off Highway 71. Build your business here! Convenient access to the highway with over 1,437 feet of very visible frontage. Includes two parcels, 24.28 acres are on the east side of the road, and 1.8 acres are on the west side of the road.

**Additional Details:**

Lot Acres	26.08
Lot Dimensions	irregular
School District	31
Taxes	\$650
Taxes with Assessments	\$650
Tax Year	2024

**Additional Features:**

**Driving Directions:**

From Anne St and 71 roundabout: north on Hwy 71 to right on Balsam Rd NW, then left at the property.



Listed By:  
Realty Experts, LLC

Affinity Real Estate Inc. participates in the Regional Multiple Listing Service of Minnesota, Inc Broker Reciprocity (sm) program, allowing us to display other broker's listings on our website. All properties are subject to prior sale, change or withdrawal.



Call Affinity Real Estate

**218-237-3333**

[info@affinityrealestate.com](mailto:info@affinityrealestate.com)



Affinity Real Estate - 600 Park Avenue South - Park Rapids MN 56470